

Precision Medicine: What Makes You Different



**2015
Annual Report**



**National Jewish
Health[®]**

Science Transforming Life[®]

Precision medicine uses advanced technology, rapidly growing scientific knowledge and massive amounts of data to look beyond visible symptoms, deep into the biology of genes, cells and biomolecules. Precision medicine understands individual patients on a deeper level and yields correct diagnoses the first time so treatment and prevention are more effective with fewer side effects.

Contents

Letter from Leadership	3
Focusing on the Individual	4
Digging Deeper	10
Working Together	18
Financial Report	26
Making a Difference	30
Faculty, Officers & Leaders	32
Endowments & Support	38
Events	44
Awards	48
Giving	50



*Michael Salem, MD
President and CEO*

*Rich Schierburg
Chair, Board of Directors*

Collaboration and Precision

Two major themes emerged at National Jewish Health this past year: collaboration and precision medicine. Continuing our growth as the leading respiratory hospital in the nation, we launched significant collaborations with four additional health care systems. The collaborations bring the comprehensive, patient-centered care practiced at National Jewish Health to thousands of new patients in Denver, New York and around the country. In January 2015, President Barack Obama highlighted a topic of great importance at National Jewish Health when he announced the Precision Medicine Initiative. Precision medicine, also called personalized medicine, has been the central element of our strategy since 2007, when we adopted *Decade of Innovation: Strategic Plan 2017*.

In December, we joined our colleagues at Saint Joseph Hospital and SCL Health to open the new Saint Joseph Hospital, a \$623 million, state-of-the-art facility. The new hospital and our own campus now bear the name National Jewish Health | Saint Joseph Hospital in recognition of our collaboration to provide the best patient care. Opening the new hospital also delivers on our goal to provide the full continuum of care, from outpatient clinic to intensive care.

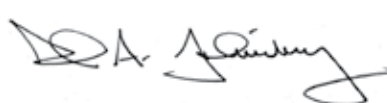
A month later, the Mount Sinai – National Jewish Health Respiratory Institute opened in New York City. Our collaboration with the Icahn School of Medicine at Mount Sinai fulfilled a long-held goal to bring our unique model of care to New York. This year we also agreed to provide diagnostic and treatment services for children with respiratory, allergic and immune disorders at Rocky Mountain Hospital for Children.

We proudly continue our extensive and important research and education collaboration with the University of Colorado School of Medicine. Our critical care physicians, in collaboration with Banner Health, provide electronic critical care services every night for intensive care units at more than 20 hospitals across the Western United States.

Precision medicine complements our unique approach to personalized patient care, which gives patients all the time they need with our expert physicians and care providers to tackle their difficult problems. Precision medicine takes advantage of advanced technology, rapidly growing scientific knowledge and massive amounts of data to look beyond patients' visible symptoms deep into the biology of their genes, their cells and the biomolecules that carry out the functions of life. This approach helps us understand individual patients on a deeper level for correct diagnoses the first time, and to treat and prevent disease more effectively and with fewer side effects.

Eight years into our strategic plan, precision medicine is embedded in our approach to patient care and research. Genetic testing guides cancer treatment. Blood tests predict patients' response to therapy. Clinical trials seek the right medication for the right patient at the right time. We have invested heavily in the tools of precision medicine, from the Institute for Advanced Biomedical Imaging, to the Integrated Bioinformation and Specimen Center and the Center for Genes, Environment & Health. We also have hired several research and clinical faculty who are shaping this new approach to research and health care.

In the following pages, you will read how faculty and staff at National Jewish Health have always practiced personalized medicine, how they are practicing precision medicine today, and how they are shaping the future of health care.



Rich Schierburg
Chair, Board of Directors



Michael Salem, MD
President and CEO



**Focusing
on the**

Individ



ual

At National Jewish Health, we don't just treat disease; we care for individuals. Whether we are using traditional tools and a team approach or the advanced tools of precision medicine, we discover the unique features in each patient that influence health and guide personalized care toward the best outcomes and value in health care.

The Drive to Find an Answer

When Isaiah Tarver became lethargic and his skin turned blue, his mother, Denise, knew it was time to head for the hospital.

In the first 13 years of his life, Isaiah Tarver had been admitted to hospitals 155 times for breathing problems associated with his asthma. Health professionals in Virginia, Florida and Utah had been unable to help him control his asthma. In Virginia, he almost never rode the bicycle given to him because he became winded so quickly. He loved sports, but was unable to play with any regularity.

Desperate for answers, Denise Tarver searched the Internet and found National Jewish Health. A seasoned and skeptical judge of health care providers, she flew from Virginia to interview National Jewish Health faculty and staff in Denver before bringing her son to the hospital.

“I was impressed with their drive to find an answer,” said Denise.

Isaiah was evaluated in the Severe Asthma Clinic and the Pediatric Day Unit, two programs that use a comprehensive multidisciplinary team approach to understand and treat the whole patient. On his first morning in the Severe Asthma Clinic, Isaiah saw a pulmonologist, an allergist and a psychologist, and underwent unique testing of his sensitivity to asthma medications. The National Jewish Health team then convinced reluctant insurance companies to proceed with a more

comprehensive evaluation of Isaiah’s chronic symptoms.

“They listened to us and they fought for us,” said Denise.

One of the more advanced evaluations, a pH probe, showed that Isaiah had severe acid reflux, with readings literally off the charts. The caustic fluid in his stomach rose up into his esophagus and his lungs, damaging their linings and triggering the breathing problems that had sent him to the hospital so many times.

“I THINK WE HAVE FINALLY FOUND THE ANSWER.”

Ronina Covar, MD, director of the Severe Asthma Clinic, recommended that Isaiah undergo a surgical procedure to control the acid reflux. Denise was scared, but agreed.

“It takes a lot to get my trust, but I trust Dr. Covar,” said Denise. “We love her wisdom and her bedside manner. She has such a gentle manner, but she doesn’t baby us.”

In the six months since the procedure, Isaiah has not been to the emergency room once. He has reduced his medications from 17 to three. He has become much more active and started losing some of the excess weight brought on by years of oral steroids. At school, he is starting on the varsity football team as a key player on both offense and defense.

“I am so excited,” said Denise. “I think we have finally found the answer.”



155

HOSPITAL ADMISSIONS FOR
ISAIAH TARVER BY THE AGE OF 13



Isaiah Tarver (no helmet) can now spend his time playing football instead of going to the hospital.

The Right Mutation

When doctors discovered that Lou Ann Langley's lung cancer had a specific genetic mutation, her life expectancy doubled.

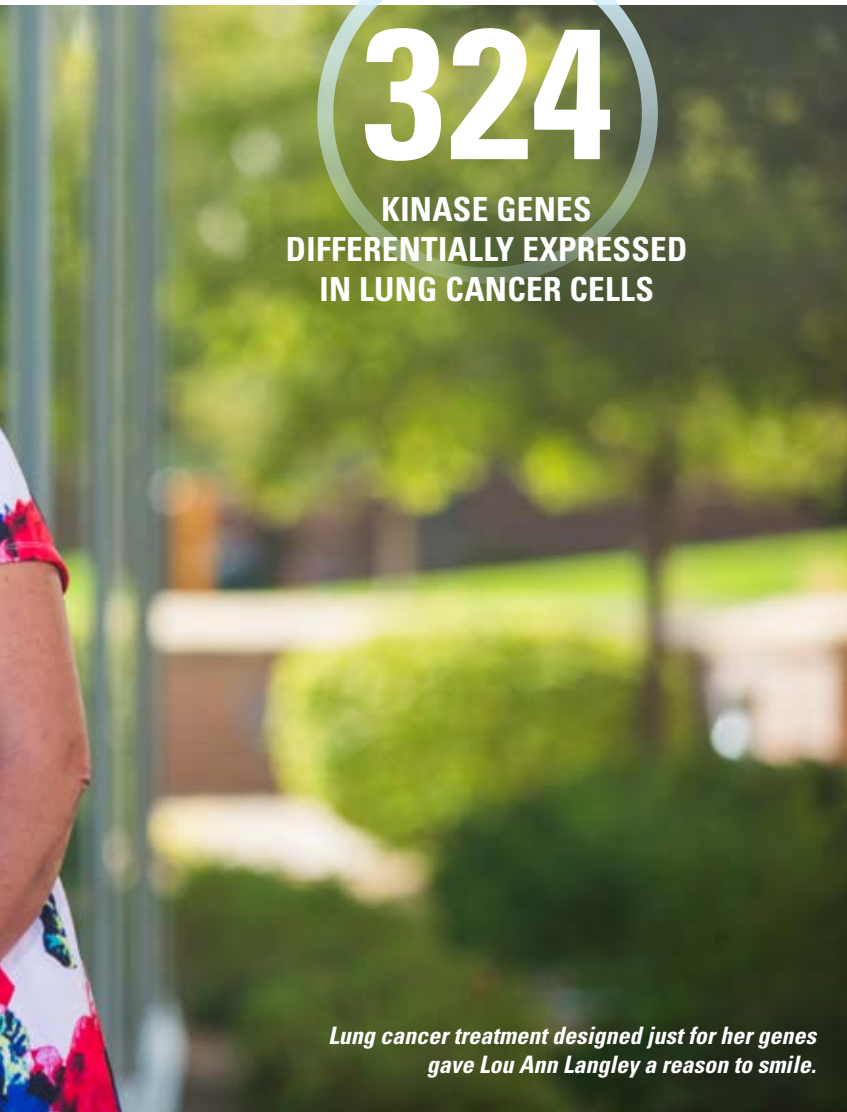
When Lou Ann Langley broke both her ankles, her orthopedist ordered a series of CT scans before surgery. Surprisingly, he also discovered a tumor on Lou Ann's lungs that turned out to be lung cancer. Although she felt no symptoms, the cancer had already spread to her brain. The outlook was grim.

During Lou Ann's first visit, medical oncologist Laurie Carr, MD, noted that Lou Ann had never smoked and ordered a genetic test. People who have not smoked but still get lung cancer are more likely to have a specific genetic mutation driving the rapid cell proliferation that occurs in cancer. Lou Ann did indeed have that mutation.

Thanks to a revolution in lung cancer care, several new medications have been approved in recent years that attack specific cancer-causing mutations. Lou Ann began therapy with one of those drugs. It does not cure the cancer, but with discovery of the mutation and treatment with a targeted therapy, Lou Ann's life expectancy doubled.



10-15%
**LUNG CANCER MUTATIONS ARE
TREATABLE WITH TARGETED
MEDICATIONS**



324

KINASE GENES
DIFFERENTIALLY EXPRESSED
IN LUNG CANCER CELLS

*Lung cancer treatment designed just for her genes
gave Lou Ann Langley a reason to smile.*

Old Drugs for New Mutations

Our researchers are anticipating mutations and finding medications to treat them.

New therapies aimed at specific genetic mutations can dramatically increase cancer patients' life expectancy. However, new mutations inevitably arise that render the targeted medications ineffective. Jay Finigan, MD; Jeffrey Kern, MD; and their colleagues are searching for medications that can be used when targeted therapies become ineffective.

Using sophisticated biological and computational methods, they identified seven genes that are both active in lung cancer and essential to the survival of lung cancer cells. Searching a database of existing medications that target those genes, they found bosutinib, a medication already approved to treat a form of leukemia. When they tested bosutinib in lung cancer cells, it effectively killed cells resistant to targeted medications. They are now evaluating bosutinib in animal models.

per

Precision medicine digs deeper. Physicians and researchers at National Jewish Health are delving deep into the biology of human health. They are looking at genes inside cells, proteins coursing through the blood and finely detailed images of the lungs to better understand and care for their patients.





Asthma Medications Target Difficult-to-Treat Patients

The experimental medication reslizumab appeared ineffective in early trials, but cut exacerbations in half when given to the right patients.

The story of reslizumab demonstrates a core goal of precision medicine — finding the right treatment for the right patient. When given to asthma patients who did not respond to corticosteroids, the mainstay asthma medication, reslizumab worked in some but not

in others, making it look ineffective when all the results were combined. But when Professor of Medicine Michael Wechsler, MD, and his colleagues gave it only to corticosteroid-resistant asthma patients with high levels of a specific immune cell, it cut exacerbations in half. Reslizumab is one of several targeted medications for asthma that are nearing government approval. National Jewish Health has participated in all of the clinical trials.

A National Leader in Smoking Cessation



Unique Culture Inspires Unique Strategies

National Jewish Health has created a tobacco cessation program designed specifically for American Indians, who use more tobacco and have more difficulty quitting than other racial and ethnic groups. Techniques and strategies that help most Americans quit tobacco are less successful for American Indians, in part because tobacco is an integral part of their culture and spirituality.

American Indian smoking cessation coaches build rapport by reducing initial intake questions, increasing the length of coaching calls and focusing interventions on the journey rather than a specific quit date. The goal is reduced use of commercial tobacco products rather than complete tobacco cessation.

Research and program development are progressing for two other groups with high smoking rates — members of the lesbian/gay/bisexual/transgender community and people with mental health issues.

One Million Calls

QuitLogix®, the National Jewish Health tobacco cessation program, served its 1 millionth caller in January 2015. Since launching its first quit line for the state of Colorado in 2002, National Jewish Health has grown to become the largest nonprofit provider of tobacco-cessation services, serving 15 states and numerous businesses and health plans. Smokers who complete the QuitLogix program are seven to 10 times more likely to successfully quit tobacco than smokers who try to quit on their own.



Subdivide and Treat

Researchers are defining subgroups of COPD patients that may be more amenable to treatment.

COPD patients have a baffling mixture of symptoms. Some suffer rapid loss of lung function, while others remain relatively stable. Some have more emphysema, while others suffer more chronic bronchitis. It is not surprising that it has been so difficult to find an effective medication for all COPD patients. National Jewish Health Professor of Medicine James Crapo, MD, and his colleagues around the nation in the COPDGene study have identified subgroups of COPD patients based on patterns of inflammation and tissue destruction, changes in CT scans over time, exacerbations and genes. Dr. Crapo has been contacted by pharmaceutical companies interested in treating some subgroups with medications targeted at their individual characteristics.

10,300
PARTICIPANTS IN
COPDGENE STUDY

Presentation Matters

How cells alert the immune system can drive autoimmune disease.

Cells alert the immune system that they are infected by holding small protein fragments of the infectious organism on their surface. The immune system destroys the cell after binding to the fragment and the protein holding it, known as HLA. Humans have a wide variety of HLAs, several of which have been associated with autoimmune diseases, ranging from type 1 diabetes to multiple sclerosis and chronic beryllium disease. Research teams at National Jewish Health are probing the molecular details of these HLAs to understand how their presentation of protein fragments could misdirect the immune system toward autoimmune disease. Findings by John Kappler, PhD; Shaodong Dai, PhD; and others have produced critical insights into type 1 diabetes and chronic beryllium disease, which suggest new treatments and possible prevention.



Does Diesel Exhaust Cause Asthma?

Identifying environmental hazards points the way to preventive measures.

Air pollution has been associated with asthma, but biological mechanisms linking air pollution to asthma have been elusive. Assistant Professor of Medicine Magdalena Gorska, MD, PhD, has identified specific cell types and molecules that link prenatal exposure to diesel exhaust and predisposition to asthma.

Dr. Gorska was recently awarded a \$2 million grant to expand her research to understand the biological mechanisms that lead from a pregnant mother inhaling diesel exhaust to a child with asthma. With billions of people around the world living in environments polluted by diesel exhaust, her research could have significant implications for the treatment and prevention of asthma.



6.8 MILLION
AMERICAN CHILDREN
WITH ASTHMA

What Is Happening in the Lungs?

Combining the visual expertise of National Jewish Health radiologists with powerful supercomputers helps bring the lungs into focus.

Radiologists are skilled at picking out subtle patterns in ghostlike X-rays, CT scans and MRIs. Radiologists, however, are more descriptive than precise. Terms like “extensive ground glass” and “mild honeycombing” describe what they see in patients’ lungs. Precision medicine, however, relies on quantifiable measurements.

Bioengineer Steven Humphries, PhD, and Radiologist David Lynch, MD, are using the expertise of National Jewish Health radiologists to teach powerful computers to read CT scans. They will not replace radiologists’ subtle skills, but the computers can measure and quantify the scarring and destruction of lung tissue. This approach helps physicians track changes in patients’ lungs over time, allowing them to better guide care and monitor the response to therapy.

0.625

THICKNESS IN MILLIMETERS OF TISSUE IN ONE IMAGE FROM A 128-SLICE CT SCAN



Milene Saavedra, MD (seated), and Vijaya Knight, MD, PhD, identify effective treatments for cystic fibrosis patients.

Preserving Precious Lung Function

A new blood test guides treatment for dangerous infections.

There are more than a dozen antibiotics that physicians can select and combine to treat the repeated respiratory infections that afflict patients with cystic fibrosis. These infections damage lungs and lead to eventual respiratory failure. Knowing as quickly as possible if a chosen combination of antibiotics is working is crucial to rapidly resolving the infection, reducing lung damage and minimizing toxic side effects of treatment.

Associate Professor of Medicine Milene Saavedra, MD, and her colleagues have identified a panel of 10 inflammatory genes whose expression levels change as inflammation begins to recede. Measuring the

activity of these genes allows physicians to quickly assess how a person is responding to treatment. That improves the chances that an infection will resolve quickly and cause no lasting damage.

The 10-gene panel has been patented. The Advanced Diagnostic Laboratories at National Jewish Health are developing a commercial test, which is already being used to measure response for cystic fibrosis medications in clinical trials.



**Working
Together**

er

Collaborations advance. Keeping pace with rapid changes in health care, National Jewish Health has developed collaborations that extend care to new patients, new locations and new services.



New Hospital Advances Collaboration

National Jewish Health extends care to inpatients.

In December 2014, National Jewish Health, Saint Joseph Hospital and its nonprofit parent, SCL Health, began to see the fruition of their joint operating agreement with the opening of the new Saint Joseph Hospital. The new hospital and the collaborative care delivered there were reflected in the name on the building — National Jewish Health | Saint Joseph Hospital. Staff and doctors at the 365-bed, state-of-the-art hospital carry on a long tradition of both hospitals of caring for all members of the community. The new collaborative relationship extends the ability of National Jewish Health doctors to treat their patients along the full continuum of care, from outpatient clinics to intensive inpatient care. As National Jewish Health and Saint Joseph Hospital have begun integrating their operations, National Jewish Health faculty and staff have taken the lead in several important areas.



- Patients who are seen on the National Jewish Health campus and who need to be admitted as inpatients are now admitted to the jointly managed hospital under the care of National Jewish Health hospitalists and other experts, enabling a more integrated care model.
- The National Jewish Health Critical Care team is an integral part of the hospital's Intensive Care Unit and provides extended physician coverage 24 hours a day.



- Thoracic surgeons from the University of Colorado, with whom we have collaborated for decades, now see patients at a specialized clinic on the National Jewish Health campus and perform surgery at the new hospital.
- Combined National Jewish Health and Saint Joseph Hospital teams provide interventional cardiology services, bringing together experts in treating both the right and left sides of the heart.
- The Adult Cystic Fibrosis Program based on the National Jewish Health campus now offers a specialized care unit at the new hospital. Patients with cystic fibrosis frequently need inpatient care as they battle a variety of infections that can be life-threatening.

Seamless Transition — Continuum of Care

Enhanced communication promotes the best outcomes and value in health care when patients transition from clinic to hospital and back again.

When Assistant Professor of Medicine James Woodrow, MD, saw Charlotte Fedanick in the COPD Exacerbation Clinic at National Jewish Health, he decided she needed to be hospitalized for her rapidly worsening COPD. By the time Charlotte's daughter had driven her two miles to National Jewish Health | Saint Joseph Hospital, hospitalist Carrie Horn, MD, had already talked to Dr. Woodrow and reviewed Charlotte's chart.

"It was quick," said Charlotte. "They took care of all the paperwork. They knew me. It was wonderful."

With the opening of the new hospital in December 2014, physicians from both institutions began actively working together. The collaboration has enabled physicians to deliver the full range of care, from clinic to hospital and back again, in a seamless manner. With National Jewish Health hospitalists admitting and caring for National Jewish Health patients, the transition from clinic to hospital is smooth. The hospitalists can review patients' electronic health records before the patients arrive. The hospitalists also know most of the physicians sending patients to the hospital, how they like to practice and how to keep them updated on a patient's status.

Charlotte's pulmonologist, Amen Sergew, MD, received regular updates from Dr. Horn, then saw Charlotte for a follow-up shortly after Charlotte left the hospital. "The communication and updates help tremendously," said Dr. Sergew.

"I got a team that knows what I am about," said Charlotte. "National Jewish Health and Saint Joseph working together is great."



Clockwise from the upper left: James Woodrow, MD, Carrie Horn, MD, and Amen Sergew, MD, provided a seamless patient experience for Charlotte Fedanick, pictured center.

Training the Next Generation

800

PHYSICIANS AND SCIENTISTS
EDUCATED AS FELLOWS



We continue our enduring collaboration with the University of Colorado School of Medicine through clinical and research training for health professionals.

Medical students, residents and post-graduate fellows at the University of Colorado School of Medicine all spend time at National Jewish Health receiving both clinical and research training. Post-graduate fellows often spend an extra year devoted exclusively to research they hope can help launch an academic career. They work with established investigators who offer insight and guidance to help their research succeed.

Post-graduate fellows are integrated into laboratories throughout National Jewish Health, often bringing valuable new ideas and perspectives to established laboratories. Michael Mohning, MD, works in the laboratory of William Janssen, MD, and is also mentored by Peter Henson, PhD. Drs. Janssen and Henson are experts in lung injury and repair.

When the lungs are damaged by toxic chemicals or other insults, cells die and spill their contents into the extracellular space. Those contents promote inflammation, which can be helpful in small doses, but harmful when it goes on too long or too vigorously. Exactly which of the cellular contents causes what damage is not well understood. One of the suspects is RNA, the molecule that helps translate genes into proteins. Dr. Mohning is investigating exactly how extracellular RNA promotes lung inflammation, which could identify new pathways and targets for therapeutic intervention in the future.

“Dr. Janssen has been an excellent mentor,” said Dr. Mohning. “He is an expert in his field. He is always willing to chat about my research and he offers great ideas on how to design experiments.”

20 MILLION

ESTIMATED NUMBER OF
AMERICANS WITH COPD

Mount Sinai – National Jewish Health Respiratory Institute Opens

Patient-centered respiratory care comes to New York City.

In January 2015, the Mount Sinai – National Jewish Health Respiratory Institute opened on the Mount Sinai Hospital campus in New York City. The Respiratory Institute, a collaboration between the Icahn School of Medicine at Mount Sinai and National Jewish Health, creates a strong, integrated program for diagnosis and treatment of respiratory diseases, including asthma, chronic obstructive pulmonary disease, lung cancer and interstitial lung disease. Research programs combining the best of both institutions including long-standing collaborations in pediatric and adult programs are being enhanced.

The Respiratory Institute uses the multidisciplinary approach practiced by National Jewish Health in its programs. Pulmonologists collaborate with specialists in related disciplines, including cardiology, allergy, gastroenterology, rheumatology, otolaryngology and thoracic surgery, to provide team-based, patient-centered care. The Respiratory Institute also incorporates Mount Sinai's programs in personalized medicine, genomics and data-driven clinical protocols to enhance the quality and outcomes of the respiratory disease practice.

Richard Martin, MD, Chair of the Department of Medicine, led the National Jewish Health effort to create protocols and plans for care at The Respiratory Institute based on the collaborative, patient-centered approach of National Jewish Health. Respiratory Institute leadership includes Charles Powell, MD, the Janice and Coleman Rabin Professor of Pulmonary, Critical Care and Sleep Medicine at the Icahn School of Medicine at Mount Sinai, serving as the CEO, and Louis DePalo, MD, the Lane Associate Professor in the Division of Pulmonary, Critical Care and Sleep Medicine at the Icahn School of Medicine at Mount Sinai, serving as the Clinical Director. The Respiratory Institute recruited five new physicians to complement 10 Mount Sinai physicians who have brought their expertise to the Institute. The Institute has also integrated Mount Sinai allergists, gastroenterologists, rheumatologists and cardiologists into its patient-centered program.

Pediatric Care Expands in Colorado

National Jewish Health pediatricians are now seeing patients at Rocky Mountain Hospital for Children.

More children are benefiting from National Jewish Health pediatric expertise, thanks to a new agreement with Rocky Mountain Hospital for Children. National Jewish Health *for Kids* provides diagnostic and treatment services for a variety of related diseases, including allergy, asthma, atopic dermatitis and immune deficiencies. Additionally, National Jewish Health *for Kids* physicians provide “on-call” service for emergency and inpatient needs for other HealthOne facilities needing pediatric consultations.

 Rocky Mountain Pediatric
Respiratory *and* Allergy Care

with  National Jewish
Health® *for kids*

Financial Report

The 2015 fiscal year was dominated by continuing, transformational change. In August 2014, we officially began operating our Colorado clinical operations through a joint operating agreement with Saint Joseph Hospital and SCL Health in Colorado. This agreement enables our clinicians to successfully treat patients through the full continuum of care at a brand new hospital facility. The new Mount Sinai – National Jewish Health Respiratory Institute with the Icahn School of Medicine opened its first location in New York in January. This collaboration broadened our geographic footprint, opened channels for expanded patient care and research and was financially accretive for both institutions. Combined, these ventures generated \$3.9 million of net, new operating revenue.

While a major focus was on new ventures, National Jewish Health continued our strategic focus on growing and diversifying our traditional, clinical operations in order to continue to be the best at respiratory and related diseases. Net patient service revenue grew over 11 percent to \$131 million. We began providing pediatric allergy/immunology services for Rocky Mountain Hospital for Children at Presbyterian/St. Luke's in Colorado and electronic critical care services for Banner Health hospitals throughout the western United States. For the first time in decades, in collaboration with the University of Colorado School of Medicine, thoracic surgeons began seeing patients on the National Jewish Health campus. Our oncology practices continue to thrive in all three locations and our traditional pulmonology, allergy, cardiac and gastroenterology programs continue to grow.

Fundraising completed another successful year, raising \$31.3 million, the largest amount in National Jewish Health history. In spite of the research funding challenges at the National Institutes of Health, grant revenues stabilized in 2015 and are poised for growth. Several new researchers were recruited during the year in genetics, pulmonology and pediatrics. These new recruits will diversify our research program and expand our future funding opportunities.

Expenses experienced a modest 6 percent growth during the year largely as a result of the expanded clinical operations, information system investments, nationwide increases in pharmaceutical prices and faculty recruitment. The investment markets were turbulent. In spite of our well-diversified portfolio, investment revenues were less than \$1 million and were significantly below the \$17.1 million returned in 2014.

The health care industry is undergoing tremendous regulatory, reimbursement and technological change. By adding new ventures, fortifying current programs, expanding collaborations, controlling cost and focusing on the tremendous value we offer to our patients, National Jewish Health continues to strengthen its position within the industry, so that we continue to offer our unique, personalized service to those we treat.



Larry Silverstein
Treasurer

Statement of Activities

CONSOLIDATED STATEMENTS OF ACTIVITIES (in millions) 2015 2014

Revenues, Gains and Other Support:

Net Patient Service Revenue	\$131.0	\$117.6
Health Initiatives Revenue	8.4	8.2
Revenue from Affiliates	3.9	0
Grant Revenue	48.6	48.3
Contributions	31.3	29.7
Investment Returns	0.1	17.1
Other Income	11.2	10.1
Total Revenues	\$234.5	\$231.0

Expenses:

Academic Services	\$91.7	\$88.3
Clinical Services	79.0	70.2
Administration and Fiscal Support	27.7	26.7
Support Services	11.8	10.9
Health Initiatives and Marketing	11.1	11.9
Fund Development	7.8	7.7
Other Expenses	3.9	3.7
Total Expenses	\$233.0	\$219.4

Increase (Decrease) in Net Assets **\$1.5** **\$11.6**

Net Assets Beginning of Year **\$187.9** **\$176.3**

Net Assets End of Year **\$189.4** **\$187.9**

CONSOLIDATED STATEMENTS OF FINANCIAL POSITION (in millions) 2015 2014

Assets:

Cash and Cash Equivalents	\$3.2	\$4.1
Accounts Receivable — net	39.6	34.8
Investments — at fair value	108.4	107.9
Other Assets	42.3	41.6
Property, Plant and Equipment — net	86.1	92.5
Total Assets	\$279.6	\$280.9

Liabilities and Net Assets:

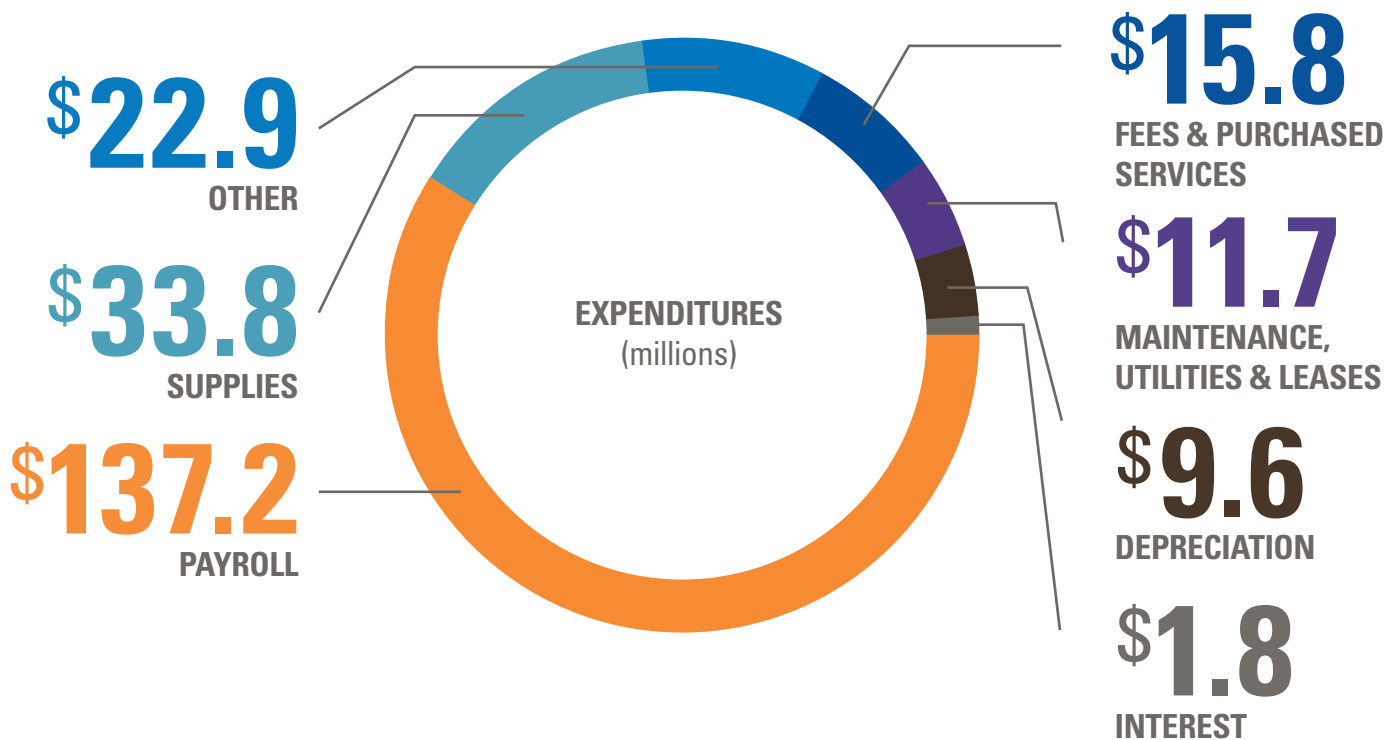
Accounts Payable and Current Liabilities	\$36.8	\$35.1
Long-term Debt	40.0	43.7
Other Long-term Liabilities	13.4	14.2
Net Assets	189.4	187.9
Total Liabilities and Net Assets	\$279.6	\$280.9

108,296

PATIENT VISITS IN FY 2015

31%

INCREASE IN PATIENT REVENUE SINCE 2011

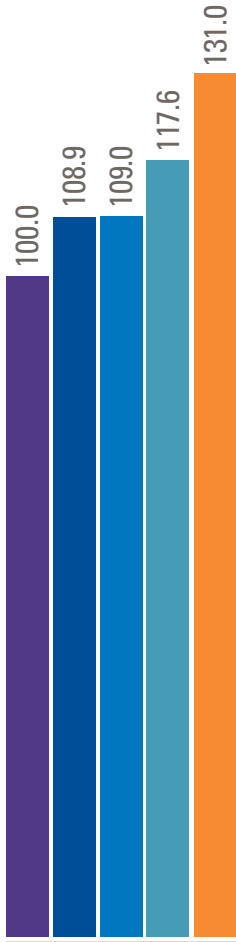


50

STATES WHERE PATIENTS CAME FROM IN FY 2015

1,700

NATIONAL JEWISH HEALTH EMPLOYEES



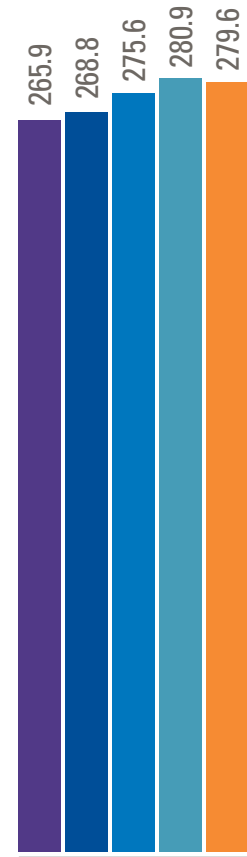
PATIENT SERVICE REVENUE
(millions)

Demand for National Jewish Health expertise continues to grow.



RESEARCH GRANT REVENUE (millions)

National Jewish Health researchers have looked increasingly to non-federal sources of funding to offset flat federal research budgets and increased competition.



NET ASSETS AND LIABILITIES (millions)

National Jewish Health net assets and liabilities remain stable.

Making a **Differe**





nice

Generosity sustains mission.

Part of what has made National Jewish Health different for 116 years is the people, foundations and corporations who support the hospital's mission. Once again in 2015, people came together for cutting-edge research, compassionate care and quality education. We appreciate the diversity and generosity of our supporters.

National Jewish Health Faculty

MEDICINE

Richard J. Martin, MD, Chair

Allergy and Clinical Immunology Division

Rafeul Alam, MD, PhD, Chief
Balachandra Gorentla, PhD
Magdalena M. Gorska, MD, PhD
Flavia Hoyte, MD
Rohit K. Katial, MD
Harold S. Nelson, MD
Anita Trikha, MD
Tho Quy Truong, MD
Richard W. Weber, MD

Behavioral Health Division

Kristin Holm, PhD
Frederick Wamboldt, MD

Cardiology Division

J. Kern Buckner, MD, Chief
Brett E. Fenster, MD, FACC, FASE
Andrew M. Freeman, MD, FACC, FACP
Darlene Kim, MD, FACC
Howard Weinberger, MD, FACC
Adam Zucker, MD

Community Research Section

Lisa C. Cicutto, PhD, RN, Section Head

Critical Care Section

Kenneth Lyn-Kew, MD, Section Head
Matthew Cohn, MD
Sherstin T. Lommatzsch, MD
Vipin Malik, MD
Jason McCarl, MD
James O'Brien, MD, FACP, FCCP
Michael D. Schwartz, MD, FACP, FCCM, FCCP
Elaine M.K. Schwartz, MD, FCCP
Amen Sergew, MD
Joshua J. Solomon, MD
Peter Stubenrauch, MD

Environmental and Occupational Health Sciences Division

Lisa A. Maier, MD, MSPH, FCCP, Chief
E. Brigitte Gottschall, MD, MSPH
Nabeel Hamzeh, MD, FCCP
Li Li, MD, PhD
Annyce S. Mayer, MD, MSPH
Karin A. Pacheco, MD, MSPH
Cecile S. Rose, MD, MPH

Gastroenterology Division

Richard J. Martin, MD, Acting Chief
Philip Hanna, MD
Jeffrey King, MD
Miranda Ku, MD, MPH
Lurette Morton, MD
Neil W. Toribara, MD, PhD

Hospital and Internal Medicine Section

Carrie A. Horn, MD, Section Head
Carrie M. Austin, MD

Sandhya Rai-Sherpa, MD
Manisha Sahni, MD
Lauren E. Sarnat, MD
Amy Silverberg, MD

Medical and Clinical Services Division

Florence B. Blager, PhD, CCC-SLP

Mycobacterial and Respiratory Infections Division

Charles L. Daley, MD, Chief
Wendi Drummond, DO, MPH
Gwen A. Huiitt, MD, MS
Michael D. Iseman, MD (Professor Emeritus)
Shannon H. Kasperbauer, MD
Kenneth Lichtenstein, MD

Nephrology/Diabetology Section

Elizabeth F. Owen Kern, MD, MS

Neuropsychology Section

Sarah B. Viamonte, PhD, MSPH, Section Head
Elizabeth Kozora, PhD
Brian Yochim, PhD

Oncology, Cancer Center Division

Jeffrey A. Kern, MD, Chief
Laurie L. Carr, MD
Jennifer Eisenstein, MD
James H. Finigan, MD
James R. Jett, MD
Christopher B. Jones, MD
Robert Kantor, MD
William Lee, MD
Rangnath Mishra, PhD

Pathology Division

Steve D. Groshong, MD, PhD, Chief
Carlyne D. Cool, MD
Rosane de Oliveira Duarte Achcar, MD
Ronald J. Harbeck, PhD
Vijaya N. Knight, MD, PhD, D(ABMLI)
Max Salfinger, MD, FIDSA, FAAM

Pulmonary, Critical Care and Sleep Medicine Division

Irina Petrache, MD, Chief
Evgeny Berdyshev, PhD
David A. Beuther, MD
Russell P. Bowler, MD, PhD
Kevin K. Brown, MD
E. Michael Canham, MD
Brendan J. Carolan, MD
Reuben M. Cherniack, MD, MS
Hong Wei Chu, MD
Gregory P. Cosgrove, MD, FCCP
Gary R. Cott, MD
James D. Crapo, MD
Gregory P. Downey, MD
James J. Ellis, Jr., MD
Evans Fernandez-Perez, MD, MSc
Stephen K. Frankel, MD, FCCM, FCCP
Anthony N. Gerber, MD, PhD
James T. Good Jr., MD

Kendra Hammond, MD
Tristan Huie, MD
William J. Janssen, MD
Beata Kosmider, PhD
Susan Kotake, MD
Esther L. Langmack, MD, CHCP, FCCP
Robert Lapidus, MD
Steven E. Lommatzsch, MD
Barry J. Make, MD
Kenneth Malcolm, PhD
Laurie Manka, MD
Richard J. Martin, MD
Robert J. Mason, MD
Ali I. Musani, MD, FCCP
Jerry A. Nick, MD
Amy L. Olson, MD, MSPH
William T. Pluss, MD, FCCP
Donald R. Rollins, MD
Milene T. Saavedra, MD
Robert A. Sandhaus, MD, PhD, FCCP
Kelly Schweitzer, PhD
Karina Serban, MD
Daniel R. Smith, MD, FCCP
Jeffery J. Swigris, DO, MS
Robert M. Tate, MD
Jennifer Taylor-Cousar, MD
Dennis R. Voelker, PhD
Michael E. Wechsler, MD, MMSc
James P. Woodrow, MD
Qun Wu, MD, PhD
Zulma X. Yunt, MD
Rachel L. Zemans, MD

National Jewish Health South Denver

Michelle A. Beutz, MD
Charlene E. Brady, MD
James J. Fenton, MD
Luciano Lemos-Filho, MD, MS
Robert M. Maulitz, MD
Richard D. Mountain, MD, FCCP
Ahmad Rashid, MD, FCCP
David A. Taryle, MD, FCCP
Mary L. Warner, MD
Jennifer S. Wink, MD

Rheumatology Division

Kevin K. Brown, MD, Acting Chief
Aryeh Fischer, MD
Mehrnaz Maleki Fischbach, MD
Barbara Goldstein, MD, MMSc
Richard T. Meehan, MD
Elizabeth A. Regan, MD, PhD
Joann Zell, MD

Research Division

Brian J. Day, PhD, Vice Chair

Sleep Medicine Section

Mark Aloia, PhD
Jack D. Edinger, PhD
Teofilo L. Lee-Chiong Jr., MD
Sheila Tsai, MD

PEDIATRICS

Erwin W. Gelfand, MD, Chair

Pulmonary

David P. Nichols, MD, Head
Tod Olin, MD
Franziska Rosser, MD, MPH
Jennifer Taylor-Cousar, MD

Allergy & Clinical Immunology

Donald Y.M. Leung, MD, PhD, Head
Jordan K. Abbott, MD
Liangua Bin, PhD
S. Allan Bock, MD
Mark Boguniewicz, MD
Kanwaljit Brar, MD
Donna L. Bratton, MD
Sanny K. Chan, MD, PhD
Christine B. Cho, MD
Ronina Covar, MD
Erwin W. Gelfand, MD
Patricia C. Giclas, PhD
Bruce. J. Lanser, MD
Henry Milgrom, MD
Harold S. Nelson, MD
Nathan Rabinovitch, MD

Ambulatory Pediatrics

Pia J. Hauk, MD, Head
Mark Boguniewicz, MD
Henry Milgrom, MD

Behavioral Health

Bruce G. Bender, PhD, Head
Genery D. Booster, PhD
Mandy Copeland, LCSW, CAC II, CDE
Joy Goldberg, PhD
Mary D. Klinnert, PhD
Lisa J. Meltzer, PhD
Jennifer Moyer Darr, PhD
Alyssa Oland, PhD
Brian K. Wise, MD

Cell Biology

David W. H. Riches, PhD, Head
Preston E. Bratcher, PhD
Azeddine Dakhama, PhD
Stijn De Langhe, PhD
Ashley Frazer-Abel, PhD
Erwin W. Gelfand, MD
Moumita Ghosh, PhD
Elena Goleva, PhD
Pia J. Hauk, MD
Peter Henson, PhD
Claudia Jakubzick, PhD
Byung Eui Kim, MD, PhD
Christina C. Leslie, PhD
Brian P. O'Connor, PhD
Elizabeth Redente, PhD
Richard Reisdorph, PhD
Susan Reynolds, PhD
Michaela Schedel, PhD
Max Seibold, PhD
Katsuyuki Takeda, MD, PhD
Meiqin Wang, MD, PhD

Affiliates

Richard B. Johnston, Jr., MD
Paul Reynolds, PhD

RADIOLOGY

Debra S. Dyer, MD, Chair

Jonathan H. Chung, MD
Christian W. Cox, MD
Valerie A. E. Hale, MD
David A. Lynch, MD
Joyce D. Schroeder, MD

ACADEMIC AFFAIRS

**Gregory P. Downey, MD,
Executive Vice President**

Division of Biostatistic and Bioinformatics

Douglas C. Everett, PhD, Head
Lori J. Silveira, PhD
Matthew J. Strand, PhD
Ted D. Wade, PhD

Center for Genes, Environment and Health

Tasha E. Fingerlin, PhD, Director
Scott Alper, PhD
Rebecca M. Davidson, PhD
Sonia M. Leach, PhD
Brian P. O'Connor, PhD
David A. Schwartz, MD, MPH
Max A. Seibold, PhD
Michael Strong, PhD
Ivana V. Yang, PhD

Affiliates

Edward D. Chan, MD
Preveen Ramamoorthy, PhD

BIOMEDICAL RESEARCH

Philippa Marrack, PhD, Chair

Primary Appointments

Scott Alper, PhD
Willi Born, PhD
James Crooks, PhD
Shaodong Dai, PhD
Johanna DiStefano, PhD

Tasha E. Fingerlin, PhD
Rachel Friedman, PhD
Fabienne Gally, PhD
James Hagman, PhD
Hua Huang, MD, PhD
Jordan Jacobelli, PhD
John Kappler, PhD
Sonia Leach, PhD
Jennifer Matsuda, PhD
Rebecca O'Brien, PhD
Anne-Laure Perraud, PhD
Larry Wysocki, PhD
Gongyi Zhang, PhD

Secondary Appointments

Rafeul Alam, MD, PhD
John Cambier, PhD
Zanghuo Chen, PhD
Rebecca Davidson, PhD
Stijn De Langhe, PhD
Thomas DeLong, PhD
Gregory Downey, MD, FRCP(C)
Laurent Gapin, PhD
Erwin Gelfand, MD
Anthony Gerber, MD, PhD
Andrew Getahun, PhD
Magdalena Gorska, MD, PhD
Katie Haskins, PhD
Ross Kedl, PhD
Laurel Lenz, PhD
Brian O'Connor, PhD
Roberta Pelanda, PhD
Nichole Reisdorph, PhD
Michaela Schedel, PhD
Carsten Schmitz, MD, PhD
Jill Slansky, PhD
Michael Strong, PhD
Beth Tamburini, PhD
Raul Torres, PhD
Linda Van Dyk, PhD
Dennis Voelker, PhD
Jing Wang, PhD

Adjunct Professor

Steven Dow, DVM, PhD

HONORS FOR RESEARCHERS

In 2015, researchers Philippa Marrack, PhD, and John Kappler, PhD, received the Wolf Prize in Medicine, an international honor that recognizes researchers at the top of their field. Many past winners of the Wolf Prize have gone on to win Nobel Prizes. Dr. Marrack was also inducted into the National Women's Hall of Fame in 2015. For more than four decades, Drs.



Marrack and Kappler, research partners and spouses, have unraveled the mysteries of the immune system — how it protects us from external threats when it is working and can lead to autoimmunity and allergies when it malfunctions.

Directors

Board of Directors

Rich Schierburg, Chair

Margaret S. Allon

Richard N. Baer

James B. Berenbaum

Paulette L. Brody

Norman Brownstein

Robin D. Chotin

Geraldine R. Cohen

R. Stanton Dodge

David H. Engleberg

Michael A. Feiner

Thomas A. Gart

Roger A. Gibson

Steven J. Glauser

A. B. Hirschfeld

Christie T. Isenberg

J. M. Kemper

Lewis M. Kling

Steven D. Kris

James D. Kuhn

Bradley A. Levin

Evelyn B. Makovsky

Connie G. McArthur

Marvin I. Moskowitz

Kathryn A. Paul

Blair E. Richardson

Hassan A. Salem

Michael K. Schonbrun

Carole Schwartz

Martin Semple

Stephen B. Siegel

Wendy Siegel

Donald A. Silversmith

Michael A. Slubowski

Marc D. Steron

Burton M. Tansky

Debra M. Tuchman

Evan H. Zucker

Lifetime Directors

Stephen W. Arent

Joseph S. Davis

Lawrence P. Gelfond

Philip H. Karsh

Leonard M. Perlmutter

Edward A. Robinson

Meyer M. Saltzman

Officers

Chair, Board of Directors

Rich Schierburg

Denver, CO

Vice Chairs, Board of Directors

Robin D. Chotin

Denver, CO

Donald A. Silversmith

Denver, CO

Evan H. Zucker

Denver, CO

Secretary, Board of Directors

Robin D. Chotin

Denver, CO

Treasurer, Board of Directors

Larry Silverstein

New York, NY

Co-Chairs, Council of National Trustees

Wendy and Stephen B. Siegel

New York, NY

Regional Vice Chairs, Council of National Trustees

Albert D. Angel

West Orange, NJ

Thomas M. Flexner

New York, NY

Jeffrey H. Kapor

Los Angeles, CA

Robert I. Paller

Atlanta, GA

Gary J. Silversmith

Washington, DC

President and CEO

Michael Salem, MD

Executive Vice Presidents

Christine Forkner

Chief Financial Officer and Executive Vice President

Ron Berge

Chief Operating Officer and Executive Vice President

Gregory P. Downey, MD

Executive Vice President Academic Affairs

Vice Presidents

Lauren Green-Caldwell

Communications

Lots Pook

Information Services and Technology

Lisa Tadiri

Development

Sarah Walker

Human Resources

President

Robin Daigh

Health Initiatives

Department Chairs

Pippa Marrack, PhD

Department of Biomedical Research

Richard J. Martin, MD

Department of Medicine

Erwin W. Gelfand, MD

Department of Pediatrics

Debra Dyer, MD

Department of Radiology

Medical Leadership

Stephen K. Frankel, MD, FCCM

Chief Medical Officer

Gary R. Cott, MD

Executive Director Quality and Safety

Affiliated Leadership

John C. Cambier, PhD

Department of Immunology & Microbiology
University of Colorado School of Medicine

Council of National Trustees

Stanford J. Alexander

Weingarten Realty Investors
Houston, TX

Marsha L. Alpert

Alpert Companies
Denver, CO

Albert D. Angel

Angel Consulting
West Orange, NJ

Adelmo E. Archuleta

Molzen Corbin
Albuquerque, NM

Margery Arent Safir, PhD

The American University of Paris
Paris, France

Robert J. Arth

Bank of America, N.A.
New York, NY

Herbert L. Ash

Manhasset, NY

Vicky L. Balmot

Arcadia, CA

Richard H. Bard

Bard Capital Group
Denver, CO

Elise A. Barish

Denver, CO

Mark H. Berey

MHB Ventures, LLC
Delray Beach, FL

Elaine C. Bialor

Sun City Center, FL

Philip F. Bleser

JP Morgan Chase Securities Inc.
New York, NY

Ronald M. Blitzer

Be Green Packaging LLC
Santa Barbara, CA

Louis A. Bluestein, Esq.

Centennial, CO

Gerald W. Bodzy

Enlight Industries, LLC
Houston, TX

Leonard Boxer, Esq.

Stroock & Stroock & Lavan LLP
New York, NY

Deborah S. Breslawsky

Morris, CT

Candy Brown

Dallas, TX

Ike J. Brown

NFI Interactive
Las Colinas, TX

Mark D. Brutzkus

Ezra Brutzkus Gubner LLP
Woodland Hills, CA

Sen. Richard H. Bryan

Lionel Sawyer & Collins
Las Vegas, NV

Barry Burgdorf

Beatty Bangle Strama PC
Austin, TX

Jayna Burgdorf

Austin, TX

Lana Cain Krauter

San Francisco, CA

Joseph J. Carroll

Certilman Balin Adler &
Hyman, LLP
Baldwin, NY

Ann S. Cassidy

The Broadhurst Foundation
Tulsa, OK

Carlos L. Chacon

OneWest Bank
Pasadena, CA

Jerome A. Chazen

Chazen Capital Partners, LLC
New York, NY

Kathy A. Chazen

National Financial Network LLC
New York, NY

Steven L. Chin

Berkshire Hathaway
Home Services
Park City, UT

Valerie E. Chin

Parallel Napa Valley
Rutherford, CA

Denise Cohen

Denver Design Center
Denver, CO

Howard S. Cohen

Waldman Brothers, LLP
Dallas, TX

Martin L. Cohen

Cohen & Steers
New York, NY

Mitchell F. Cohen

CIT Commercial Services
Los Angeles, CA

Warren P. Cohen

Warren P. Cohen Charitable Fund
Los Angeles, CA

Marianne W. Cohn

Metairie, LA

Bruce H. Corbin

Glendale, CA

Joanne A. Cornelison

Cheyenne, WY

John F. Daly

Morganville, NJ

Suzanne Davis

New York, NY

Bruce D. Deifik

Integrated Properties, Inc.
Denver, CO

Dale R. Dekker

Dekker/Perich/Sabatini, Ltd.
Albuquerque, NM

Joseph A. DeLuca

Joseph A. DeLuca Inc.
Huntington Bay, NY

Richard J. DeRienzo

Lefkowitz, Garfinkel, Champi and
DeRienzo, PC
Providence, RI

Christine M. DiGregorio

Six D, Inc.
Gallup, NM

Joseph A. DiGregorio

Six D, Inc.
Gallup, NM

Irwin J. Dinn

Dinn, Hochman & Potter LLC
Cleveland, OH

Susan J. Dinn

Denver, CO

Bruce S. Dobozi, MD

Bruce S. Dobozi, M.D.
Boulder, CO

Jeremy Doppelt

Jeremy Doppelt Realty
Management
Boonton, NJ

Irene M. Drescher

Potomac, MD

Jared M. Drescher

DHA & Company
Bethesda, MD

Joyce N. Eichenberg

New York, NY

Robert Ezra

Ezra Brutzkus Gubner LLP
Woodland Hills, CA

Joel H. Farkas

Gateway American
Resources LLC
Centennial, CO

Murray D. Fischer

Murray Fischer Law Offices
Beverly Hills, CA

Aaron H. Fleck

Aspen, CO

Barbara O. Fleck

Aspen, CO

Thomas M. Flexner

Citi Business Services
Payment Services
Tampa, FL

Madeline Forbes

Bloomfield Hills, MI

Sidney E. Forbes

The Forbes Company
Southfield, MI

Larry J. Freeman

Freeman Beauty Labs Division of
pH Beauty Labs, LLC
Los Angeles, CA

Harry W. Friedman

Rosenthal & Rosenthal of
California, Inc.
Woodland Hills, CA

Lester M. Friedman

Great American Group
Woodland Hills, CA

Ronald S. Friedman

Marcum LLP
Los Angeles, CA

Alex Fryburg

Pompano Beach, FL

Barbara M. Gallagher

Nordstrom, FSB
Englewood, CO

Betty Gates

Aspen, CO

Deborah Gaynor

Morgan Stanley
Santa Fe, NM

Donald J. Gibson

Florham, NJ

David A. Gitlitz

Aspen, CO

Beth I. Gold
Dallas, TX

James J. Gold
Neiman Marcus Group Inc.
Dallas, TX

Staunton Golding
MBH Enterprises Inc.
Denver, CO

Mark S. Goldstein
Paley Rothman
Bethesda, MD

Solvin W. Gordon
Gordon Insurance LLC
Montgomery Village, MD

Robert B. Greenspan
Greenspan Consult, Inc.
Encino, CA

Janet E. Grove
East Hampton, NY

Bruce S. Haas
Countryside Power Sweeping
Hollywood, FL

Judith Haas
Hollywood, FL

Jacqueline C. Hall
San Francisco, CA

Dee Hartzmark
Moreland Hills, OH

Lee P. Hartzmark
Oppenheimer & Co. Inc.
Beachwood, OH

Robert E. Helpern, Esq.
Tannenbaum, Helpern, Syracuse
& Hirschtritt, LLP
New York, NY

Marcia E. Hembree
Portland, OR

James B. Hill
Berry-Hill Galleries, Inc.
New York, NY

Mark Holbreich, MD
Allergy & Asthma Consultants
Indianapolis, IN

Marc A. Holliday
SL Green Realty Corp.
New York, NY

Kristen M. Holtzman
Aspen, CO

Marc L. Holtzman
Kazkommertsbank
Kazakhstan

Eric J. Hoover
Santa Fe, NM

Robert J. Ivanhoe
Greenberg Traurig, LLP
New York, NY

Jimmy H. Jackson
Jackson Claborn Inc.
Plano, TX

Anne L. Jacobson
Lake Estates Corporation
Boca Raton, FL

Norman K. Jacobson
Lake Estates Corporation
Boca Raton, FL

George E. Johnson
Chicago, IL

David J. Kantes
Bedminster, NJ

Jeffrey H. Kapor
Buchalter Nemer
Los Angeles, CA

Barry A. Kastner
Bibby Financial Services
Boynton Beach, FL

Robert M. Keats
Potomac, MD

Thomas A. Keller III
Gray Plant Mooty
Minneapolis, MN

Mark M. King
Revelstoke Capital Partners LLC
Denver, CO

John J. Knott Jr.
CBRE
Las Vegas, NV

William A. Kosis
PNC Business Credit
East Brunswick, NJ

John Z. Kukral
Northwood Investors
New York, NY

Charles Kushner
Kushner Companies
New York, NY

Alan W. Landsburg
The Landsburg Company
Los Angeles, CA

Robert W. Langholz
Holliman Langholz & Runnels
Tulsa, OK

Madeleine Larson
Aspen, CO

Jerrold L. Lavine
The Freeman Group Ltd.
Providence, RI

Jeffrey G. Leflein
Allergy & Immunology
Associates of Ann Arbor PC
Ypsilanti, MI

Harvey L. Leo, MD
Allergy & Immunology
Associates of Ann Arbor PC
Ypsilanti, MI

Susan H. Lerner
Buttoned Up, Inc.
Ann Arbor, MI

William Mark Levinson, Esq.
Fox Rothschild LLP
Los Angeles, CA

Robert K. Lewin
CIT Commercial Services
Los Angeles, CA

Samuel B. Lewis
SBL Property Consultants LLC
Scarsdale, NY

Fred F. Lionetti
Valencia, CA

Keith M. Locker
Inlet Capital Management, LLC
New York, NY

Brian S. MacConnell
Steel City Capital Funding
Boca Raton, FL

Marc A. Magazine
Savills Studley
New York, NY

Andrew T. Malloy
Quixotic Endeavors, LLC
Greenwood Village, CO

Charles H. Mandell, MD
Boca Raton, FL

Jane Mandell
Boca Raton, FL

Jay S. Mangel
Crowe Horwath LLP
Sherman Oaks, CA

Lawrence A. Marsiello
Pine Brook Road Partners, LLC
New York, NY

Michele S. Marvins
Houston, TX

Edith S. McAllister
San Antonio, TX

Sherman C. McCorkle
Technology Ventures Corporation
Albuquerque, NM

Jonathan L. Mechanic
Fried, Frank, Harris, Shriver &
Jacobson LLP
New York, NY

Robert L. Mettler
Rancho Santa Fe, CA

Myron M. Miller
Miller Global Properties, LLC
Denver, CO

Warren K. Mino
Webster Business Credit
Corporation
New York, NY

Arthur J. Mirante II
Avison Young
New York, NY

E. Jayne Mockler
State of Wyoming
Cheyenne, WY

Bruce E. Mosler
Cushman & Wakefield, Inc.
New York, NY

Patricia Mulroy
Desert Research Institute &
Brookings Mountain-West
Las Vegas, NV

Jay M. Murnick
Murnick Property Group
West Orange, NJ

Lee S. Murnick
Murnick Property Group
West Orange, NJ

Maxine B. Murnick
Short Hills, NJ

James F. Murray
Murray & Gaunt Partners
New York, NY

Scott Murray
Murray Media
Dallas, TX

Lee S. Neibart
Ares Operations, LLC
Los Angeles, CA

Joseph F. Nemio
TD Bank, NA
Portland, ME

Carol D. Nichols
The Villages, FL

Robert I. Paller
Smith, Gambrell & Russell, LLP
Atlanta, GA

Zachary H. Pashel
ZHP Limited
Denver, CO

Lewis C. Pell
Vision-Sciences, Inc.
Orangeburg, NY

Sandy C. Peltyn
DeSimone Consulting
Engineers, PLLC
Las Vegas, NV

Carla O. Peperzak
Spokane, WA

Marcus B. Peperzak
Aurora Organic Dairy
Boulder, CO

Alfred Perlstein
Los Angeles, CA

James Perse
James Perse Enterprises, Inc.
Downey, CA

Joseph Pollicino Jr.
Wells Fargo Bank
New York, NY

Joseph A. Pollicino Sr.
Manhasset, NY

Michael E. Pralle
CCP Holdings, LLC
New York, NY

Stephen E. Raphael
Merrill Lynch
New York, NY

Gleann M. Robbins
Key Largo, FL

C. Patrick Roberts
Florida Association of
Broadcasters Inc.
Tallahassee, FL

Scott D. Robinson
Hampton Partners Holdings, LLC
Denver, CO

Billie Ross
Chicago, IL

Irene B. Rubenstein
Branda Vista, Inc
Tampa, FL

M. Ronald Ruskin
The Lansco Corporation
New York, NY

Richard B. Saltzman
Colony Capital, LLC
New York, NY

Thomas J. Saylak
Teewinot Holdings LLC
Scarsdale, NY

Richard T. Schlosberg III
San Antonio Capital Management
San Antonio, TX

Milton Schneiderman
Madison Homes
Tysons Corner, VA

Brad D. Schnepf
Schnepf Enterprises LLC
Las Vegas, NV

Steven G. Schorr
Las Vegas, NV

Dale D. Schuble
Chevy Chase, MD

Steven J. Seif
Hahn & Hessen LLP
New York, NY

John M. Sevo
Spectrum Retirement
Communities, LLC
Denver, CO

William C. Shaddock
Capital Title of Texas, LLC
Plano, TX

Diane K. Shah
Diane K. Shah Foundation, Inc.
New York, NY

Leslie Shaw
Jeremy Doppelt Realty
Management
Boonton, NJ

Mark E. Shure
Latimer LeVay Fyock, LLC
Chicago, IL

Maureen J. Shure
Smothers Realty Group
La Grange, IL

Lila Siegel
Boynton Beach, FL

Stephen B. Siegel
CBRE
New York, NY

Wendy Siegel
New York, NY

Gary J. Silversmith
P&L Investments, LLC
Washington, DC

Larry A. Silverstein
Silverstein Properties
New York, NY

Roger A. Silverstein
Silverstein Properties
New York, NY

Michael S. Smith
Blue Spruce Capital
Boulder, CO

R. D. Smith
Smith Mandel & Associates
Burbank, CA

David B. Snow Jr.
Cedar Gate Partners, LLC
Darien, CT

David N. Sonnenblick
Sonnenblick-Eichner Company
Beverly Hills, CA

Michael R. Stanford
Payday, Inc.
Albuquerque, NM

David A. Stein
The David A. Stein Family
Foundation, Inc.
Ponte Vedra Beach, FL

Linda B. Stein
Ponte Vedra Beach, FL

Deborah R. Steinberg
Studio City, CA

Harry C. Steinmetz
WeiserMazars
New York, NY

Robert A. Stern
Lenders Residential Mortgage
Addison, TX

Sheila L. Stern
Lake Worth, FL

Tammany A. Stern
Bestofguide.Com
Addison, TX

Dan H. Stewart
Valley Construction Company
Henderson, NV

Walter C. Stillwagon
PNC Financial Services Group
New York, NY

Andrew H. Tananbaum
Capital Business Credit, LLC
Ft. Lauderdale, FL

Benjamin S. Thrush
HUB International Northeast Ltd.
New York, NY

Carl A. Toriello
Jefferies LLC
Los Angeles, CA

Barbara Tornberg
Gemini Concepts Inc.
Sunny Isles Beach, FL

Lynn Trojahn
ACCION New Mexico
Albuquerque, NM

Kenneth L. Tucker
Wilmette, IL

Sheryl I. Tucker
Lower Electric LLC
Northbrook, IL

Terrence J. Ullrich
Agenta, LLC
Natick, MA

Mark A. Walsh
Silverpeak Real Estate Partners
New York, NY

Elaine H. Weinberg
Morgan Stanley
Boca Raton, FL

Timothy J. Welch
New Canaan, CT

George T. Wendler
Marketing Management
Group Inc.
New York, NY

Harriette M. Will
Richmond, VA

Philip D. Winn
Rancho Mirage, CA

Dale A. Wood, MD
Southwest Asthma &
Allergy Clinic
San Antonio, TX

Mertie Wood
San Antonio, TX

Anne P. Young
Colorado Springs, CO

Paul J. Zaffaroni
ROTH Capital Partners
Newport Beach, CA

Ethel S. Zale
Silvergold Interiors
Dallas, TX

John F. Zwetchkenbaum, MD
Asthma & Allergy Physicians of
Rhode Island
Providence, RI

Emeritus Trustees

Stanley P. Blacher
Blacher Brothers, Inc.
Providence, RI

Paul J. Choquette
Gilbane Inc.
Providence, RI

Garrett B. Hunter
CDC New England
Providence, RI

Sheldon Magazine
Rancho Mirage, CA

John C. Portman Jr.
Portman Holdings
Atlanta, GA

Morris Rochlin
West Bloomfield, MI

Endowed Chairs & Fellowships

Endowed Chairs and Professors

The Sally Lease Bartalot Endowed Fund for Psychosocial Medicine

Fred Wamboldt, MD, Professor, Division of Pulmonary, Critical Care and Sleep Medicine, Department of Medicine

Girard & Madeline Beno Chair in Mycobacterial Diseases

Michael D. Iseman, MD, Professor Emeritus, Division of Mycobacterial and Respiratory Infections, Department of Medicine

Endowed Chair in Interstitial Lung Disease

Gregory P. Cosgrove, MD, Associate Professor, Department of Medicine; Assistant Director, Interstitial Lung Disease Program

Irene J. & Dr. Abraham E. Goldminz Professor of Immunology and Respiratory Medicine

Ida & Cecil Green Professor of Cell Biology

John C. Cambier, PhD, Chairman, Department of Immunology
Chair Appointment Under Consideration

The Catherine Kramer Professor of Clinical Mycobacteriology

Chair Under Funding

The Catherine Kramer Scientist in Pediatric Medicine

Donna L. Bratton, MD, Associate Professor of Pediatrics,
Division of Allergy

Marjorie & Stephen Raphael Chair in Asthma Research

Chair Appointment Under Consideration

Margaret A. Regan Professor of Pulmonary Inflammation

Peter M. Henson, PhD, Professor, Department of Pediatrics

Veda H. and Chauncey H. Ritter Chair in Clinical Immunology

Rafeul Alam, MD, PhD, Professor of Medicine; Head,
Division of Allergy and Clinical Immunology

Cetalie & Marcel Weiss Chair in Pulmonary Medicine

Robert J. Mason, MD, Professor and Associate Vice President,
Academic Affairs; Director, Environmental Lung Center

Helen Wohlberg & Herman Lambert Chair in Pharmacokinetics

Rohit K. Katial, MD, Professor, Division of Allergy and Clinical Immunology, Department of Medicine; Associate Vice President for Clinical Research and Industry Relationships; Co-Director, The Cohen Family Asthma Institute

Wollock Family Foundation Chair in COPD Research

Irina Petrache, MD, Chief, Division of Pulmonary, Critical Care and Sleep Medicine

The Drs. Harold & Mary Zirin Chair in Pulmonary Biology

Greg P. Downey, MD, Executive Vice President for Academic Affairs; Professor, Department of Medicine, Pediatrics and Immunology

Annual Chairs and Professors

Edelstein Family Chair in Adult Pulmonary Medicine

Richard J. Martin, MD, Professor and Chair, Department of Medicine

Edelstein Family Chair in Pediatric & Clinical Immunology

Donald Y. M. Leung, MD, PhD, Professor; Head, Division of Pediatric Allergy and Immunology

Rebecca Runyon Bryan Chair in Cystic Fibrosis

Jerry A. Nick, MD, Associate Professor, Department of Medicine

Endowed Fellowships

Robert William Gitzen Jr. & Christopher Peter Gitzen Fellowship in Basic Immunology

Janet S. Lewald Fellowship in Basic Immunology

The Bettina Garthwaite Lowerre Fellowship in Mycobacterial Research

Helen Wohlberg & Herman Lambert Fellowship in Cancer Biology

Harold S. Nelson, MD, Endowed Allergy Fellowship

Young Family Endowed Fellowship for Pulmonary Diseases

Annual Fellowships

Viola Vestal Coulter Foundation Scholarship

The Eugene F. & Easton M. Crawford Pediatric Research Fellowship

Michael & Eleanore Stobin Pediatric Fellowship

Young Family Fellowship for Pulmonary Diseases

Honorary Fellowships

Arnold & Sheila Aronson Fellowship in Pediatric Pulmonary Medicine

Priscilla Campbell Memorial Award

Vernon Dale Fellowship in Pediatrics

Melvin Garb Endowed Fellowship in Basic Immunology

Andrew Goodman Fellowship in Medicine

Andrew Goodman Fellowship in Pediatrics

Great West Life Assurance Fellowship

Fred O. Lawson Jr. Fellowship in Clinical Immunology

James F. Murray Pediatric Fellowship



Private and Philanthropic Funds & Labs

Lee & Katherine N. Abraham Fund for AIDS and Immunologic Research

1992 New York Retail & Fashion Industries Dinner

Anna Perahia Adatto Clinical Research Center

Leah & Hans Kayem

Roy E. Alderson Immunology Laboratories

Louise & Richard Alderson

Angel Family Fund for Pediatric Asthma Research

Carole & Albert D. Angel

Annual Conference on Excellence in Research

Abraham J. Kauvar, MD, and Jean Kauvar

Maurice Austin Research Fund

Friends of Maurice Austin

William and Gloria Bayzerman Fund

Established by the Estate of William and Gloria Bayzerman

Bernard Bear Memorial Fund for Pediatric Research

Mrs. Rhoda Bear

Ruth R. Berkley Endowed Research Fund for COPD

Estate of Ruth Berkley

Miriam C. Bernstein Fund for the Study of Immunology & Vasculitis

M. Sheldon Bernstein, Family & Friends

Molly Blank Fund for the Care of Children in Need

Molly Blank

The Leonard & Enid Boxer Fund for Pediatric Allergy Research

1993 New York Real Estate & Construction Industries Dinner

F. L. Bryant Jr. Research Laboratory for the Study of the Mechanisms of Lung Disease

1983 New York Real Estate & Construction Industries Dinner

Paul R. & Kathy Herdt Charron Fund for Pediatric Asthma and Vocal Cord Dysfunction

1996 New York Retail & Fashion Industries Dinner

Marke G. Chatman Fund for Sarcoidosis Research

Chatman Family & Friends

Jerome A. & Simona Chazen Fund for Lupus & Autoimmune Disease Research

1990 New York Retail & Fashion Industries Dinner

The Ric Clark Fund for Cutting-Edge Pilot Studies and Bridge Research

2014 New York Real Estate & Construction Industries Dinner

The Martin and Michele Cohen Fund for Personalized Medicine

2007 New York Real Estate & Construction Industries Dinner

Max & Sara Cowan Endowment

Estate of Max Cowan

Grace Craft Memorial Fund

Dr. Arnold Craft

Freddy Cunha Children's Research Fund

Jeanne & Fred Cunha & Friends

Robert W. Davis Memorial Fund for Pediatric Asthma Research

2000 Tulsa Dinner

Edith & Edward Delman Fund for Pediatric Asthma Research

Edith & Edward Delman

Anthony J. DeLuca Memorial Fund for Lung Cancer Research

1995 New York Real Estate & Construction Industries Dinner

Patricia Colbert Donovan Memorial Fund for ILD Research

Family & Friends

Drescher Fund for AIDS Research

Irene & Jared Drescher

Morey S. Duman Fund for Asthma Research

Shirley M. Duman

The Esther Baird Dunlap Laboratory for Research in Immune Deficiency

Esther B. Dunlap

David L. & Judith S. Dworkin Fund for Research & Treatment

1987 New York Retail & Fashion Industries Dinner for Immune System Diseases

The Sydney & Sylvia Engel Research Fund for Immune Deficiency Disorders

Sylvia & Sydney Engel, Family & Friends

Ruth Deering Ewart Asthma Research Fund

Betty & John E. Ewart

The Dorothy Fabricant Research Fund

Estate of Paul Fabricant

The Sandi and Andrew Farkas Research Fund for Cancer Immunology

2002 New York Real Estate & Construction Industries Dinner

Fashion Industries Fund for Respiratory and Immune System Diseases Research

1991 New York Retail & Fashion Industries Dinner

Carl & Hazel Felt Laboratory for Asthma Research

Hazel & Carl Felt

The Thomas M. and Deban D. Flexner Research Fund in Pediatric Asthma and Lung Inflammation

1998 New York Real Estate & Construction Industries Dinner

The Michael D. and Elizabeth M. Fraizer Fund for Research in Cystic Fibrosis

1996 New York Real Estate & Construction Industries Dinner

Harriet Freed Fund for Lupus Research

Daniel Freed, Family & Friends

Isadore & Anne Freeman Fund for Pulmonary Research

Isadore Freeman

The Dr. Gerald J. and Dorothy R. Friedman Endowed Research Fund

The Gerald J. and Dorothy R. Friedman Foundation for Medical Research

The Fund to Cure Asthma

Nancy & James Berry Hill; Marjorie & Stephen Raphael

Dollie & Jack Galter Pediatric Research Laboratories

Dollie Galter Patrons: Philip Rootberg & Co. Hotel Employees and Restaurant Employees International Union

Melvin Garb Foundation Endowed Fellowship for Basic Immunology

Melvin Garb Foundation

Jennie R. Gauger Memorial Fund

Estate of Paul W. Gauger

Barry Ginsberg Memorial Fund

Family & Friends

The Fannie Gluck and Katy Bodansky Endowment Fund to Support Indigent Care

Estate of Samuel Gluck

The Beth and Jim Gold Fund for Pediatric Allergies

2007 New York Retail & Fashion Industries Dinner

Murray & Charlotte Goldberg Fund

Charlotte & Murray Goldberg

Jacob I. Goldstein Fund

Estate of Jacob I. Goldstein

The Willie Mae and Alexander Goldstein Sr. Endowed Fund for Pediatric Programs

Alexander Goldstein Sr. and Willie Mae Goldstein Foundation

Andrew Goodman Memorial Fund

1993 New York Retail & Fashion Industries Dinner

Nena Goodman Memorial Fund for the Clinical Research Center

1998 New York Retail & Fashion Industries Dinner

Paula Gordon Research Fund for Anaphylactic Shock

Joan J. Gordon & Edward S. Gordon

J. Peter Grace Fund for Immunologic and Respiratory Disease Research

J. Peter Grace

Julian S. Greenspun Fund to Cure Cancer

Beverly Greenspun & Family

The Janet Grove Fund for Lung Disease & Lung Cancer

2000 New York Retail & Fashion Industries Dinner

Joan L. Hafey Memorial Fund for Pulmonary Fibrosis Research

Mark Stroock

George W. Hansen Research Fund

Robert J. Cruikshank & Friends in Houston, Texas

Hasbro Children's Foundation Program in Pediatric Asthma

Hasbro Children's Foundation

William Randolph Hearst Research Endowment for the National Research Center for Environmental Lung Disease

William Randolph Hearst Foundation

Holliday Memorial Fund for Lung Cancer Research

2011 New York Real Estate & Construction Industries Dinner

The Elva and Lewis Humphreys and Sally Leonard Endowed Fund for Indigent Patients in Kansas and Texas

Mr. & Mrs. Lewis H. Humphreys

Robert and Anne Ivanhoe Fund for the Research and Care of Rheumatoid Arthritis and Immune-Related Diseases

2012 New York Real Estate & Construction Industries Dinner

Aron H. and Irma B. Jacobson Fund for Children with Asthma

Irma B. Jacobson & A.J. Contracting Company, Inc.

Anthony M. & Lena M. Javancie Trust for Asthma and Emphysema Research

Billie Javancie

Leonard Kaplan Fund

Edith Kaplan

Samuel & Alma Kates Emphysema Research Fund

Lore Kates

Dr. Abraham J. Kauvar, MD, Presidential Award

Abraham J. Kauvar, MD, and Jean Kauvar

Herman F. Kerner Immunology Research Fund

Herman F. Kerner

Boris & Jacqueline Kliot Fund for Pediatric Pulmonary Research

1990 New York Retail & Fashion Industries Dinner

The John R. and Karen K. Klopp Fund for Childhood Asthma and Environmental Research

2005 New York Real Estate & Construction Industries Dinner

The Doris M. Knauff Memorial Fund for ILD Research

Mr. J. William Knauff III

The Fraeda and Bill Kopman Fund for COPD Programs

William H. and Fraeda Kopman

The Lana Cain Krauter and Philip J. Krauter Fund for Basic and Cancer Research

2001 New York Retail & Fashion Industries Dinner

James D. & Marjorie Kuhn Fund for the Childhood Asthma Management Program at National Jewish Health

1994 New York Real Estate & Construction Industries Dinner

The Dr. Albert J. Kukral Memorial Fund for Respiratory Infections

2004 New York Real Estate & Construction Industries Dinner

Laporte Crystallography Imaging Center

Allen Laporte

Evelyn and Leonard Lauder Fund

The Lauder Foundation

Joshua Lehman Asthma Research Fund

Ilona V. Katonah, Family & Friends

Richard & Emmy Lou Levin Research Fund for Immune System Diseases

Emmy Lou & Richard Levin

J. Leonard and Myra Levy Family Fund

Mrs. Myra Levy & Family

Liberty Electric Fund for Asthma Research

Mr. & Mrs. Harvey Ball; Mr. & Mrs. Robert Frank

William R. & Nora H. Lichtenberg Pediatric Asthma Fund

Linda Lichtenberg Kaplan & The Lichtenberg Foundation

Lord & Taylor Laboratory for Research in Lung Biochemistry

1981 New York Retail & Fashion Industries Dinner

Sidney M. Louis Memorial Fund

S. M. Louis Fund, Inc.

Steve Love Fund for Asthma Research

Homestead Elementary School

Lung Cancer Research

Anonymous

The Harold and Reba Martin Fund for Respiratory Research

Harold & Reba Martin

The Arthur C. and Elizabeth R. Martinez Fund for Childhood Asthma

1994 New York Retail & Fashion Industries Dinner

Michele Sharney Marvins Fund for Pediatric Indigent Care

Mrs. Alex Goldstein Sr.

**Esther Mathias Fund for Treatment and Research in Medicine,
Nursing and Psychology**

Rudolf E. S. Mathias and Camille Mathias

William C. McCahill Jr. Fund for Research in Lung Diseases

1989 New York Real Estate & Construction Industries Dinner

**Jonathan L. and Wendy S. Mechanic Fund for Lung Cancer and
COPD Research and Treatment Programs**

2009 New York Real Estate & Construction Industries Dinner

The Dorris Marcus Mendelsohn Endowment Fund

Estate of Dorris Marcus Mendelsohn

**The Robert L. and Susan T. Mettler Fund for Clinical Research in
Childhood Asthma**

1999 New York Retail & Fashion Industries Dinner

Milken Family Program in Children's Pulmonary Diseases

Milken Family Medical Foundation

**The Robert C. Miller Endowed Fund in Occupational and
Environmental Medicine**

Janet Schaumburg

Arthur J. Mirante II Fund for Immunological Research

1990 New York Real Estate & Construction Industries Dinner

The Morgridge Academy Fund

Sunshine Chapter of NJMRC

William J. & Ruth Morrison Research Fund

Ruth & William J. Morrison

Abraham Moskowitz Laboratory for Asthma Research

Neva & Marvin Moskowitz

**Bruce E. and Wendy F. Mosler Fund for Treatment and Research of
Pediatric and Adult Asthma**

2010 New York Real Estate & Construction Industries Dinner

Joseph & Gail Moss Asthma Research Fund

Gail & Joseph Moss

**Theodore and Maxine Murnick Family Endowed Fund for Pediatric
Asthma Research**

Theodore & Maxine Murnick

**Ira & Jacqueline Neimark Laboratory Clinical Pharmacology
in Pediatrics**

1985 New York Retail & Fashion Industries Dinner

**Lee S. and Joyce L. Neibart Fund for Pediatric and Adult Immunology
and Rheumatology**

2008 New York Real Estate & Construction Industries Dinner

Dolores and Walter Neustadt Jr. Pediatric Asthma Research Fund

Wal-Dot Foundation

New Mexico Fund for Indigent Care

Annual Albuquerque Dinner Donors

**Carol D. Nichols Research Laboratories in
Immunodeficiency Diseases**

1985 New York Real Estate & Construction Industries Dinner

The Arnold & Regina Orlick Fund for Pediatric Immunodeficiencies

1997 New York Retail & Fashion Industries Dinner

The Maurice J. Oringer Fund for Immunologic Research

Estate of Maurice J. Oringer

Morris Perlmutter Fund for Research in Immunology

Sunya P. Kronstadt, Family & Friends

Mary Pickford Fund for Emphysema Research

Mary Pickford Foundation

Bernard Polonsky Fund for Capital Equipment

Bernard Polonsky

**The Gene & Ruth Posner Foundation's Center for
Pulmonary Rehabilitation**

The Gene & Ruth Posner Foundation

Nathan and Rose B. Posner Research Fund for Emphysema and COPD

Nathan & Rose B. Posner

**The Wayne Pralle Memorial Fund for Emphysema and Other Chronic
Obstructive Pulmonary Diseases (COPD)**

2003 New York Real Estate & Construction Industries Dinner

Mitchel & Florence Kutner Rambar Memorial Fund

Ann R. & Edgar Clark

Rhode Island Fund for LUNG LINE

Rhode Island Friends

Rhode Island Fund for Pediatric Asthma Research

2006 Humanitarian Award Luncheon

Chauncey & Veda H. Ritter Research Program in Arthritis

Mr. & Mrs. Chauncey Ritter

Linnie Belle Roberts Memorial Fund for Research in Asthma

Jack Roberts

Justyn C. Rosen Family Resource Center

Justyn C. Rosen

**The Eleanor T. and Samuel J. Rosenfeld Endowed Fund for
Asthma Research**

The Samuel J. and Eleanor T. Rosenfeld Family Foundation

Louis and Freda Rubenstein Endowment Fund for Indigent Care

Mrs. Louis Rubenstein

Barbara & LeRoy Rubin Fund for Asthma Research

Barbara & LeRoy Rubin

Dr. Nancy Lynne Ruby Fund for Asthma Research

Mrs. Robert N. Ruby

**M. Ronald & Myrna Ruskin Clinical Immunology
Diagnostic Laboratory**

1984 New York Retail & Fashion Industries Dinner

**The Richard B. and Bette A. Saltzman Fund for Food and
Other Allergies**

1999 Real Estate & Construction Industries Dinner

**Thomas J. and Laurie Saylak Fund for Underprivileged and
Chronically Ill Children**

2006 New York Real Estate & Construction Industries Dinner

Howard Evan Schlessel Foundation Fund

Mr. & Mrs. Walter Schlessel

The Schuble Family Foundation Fund for ILD Research

Joseph R. Schuble Sr.

**Andrew Grayson Schultz & Thomas Britton Schultz Memorial Fund
for Research in Disorders of the Immune System in Children**

1989 New York Retail & Fashion Industries Dinner

**Shapiro Family Fund for the Autoimmune Lung Center at
National Jewish Health**

Leslie & Lenny Shapiro

The Shirley Lee Sherr Fund for Research for Respiratory Diseases

Estate of Belle Sherr

**The Joanne Siegel Memorial Fund for the Advancement of
Pediatric Care**

Lila Siegel, Family & Friends & Dana Bischoff Noonan

**The Stephen B. & Wendy Siegel Fund for Pediatric Asthma &
Allergy Research**

1992 New York Real Estate & Construction Industries Dinner

The Wendy Siegel Fund for Leukemia and Cancer Research

2013 New York Real Estate & Construction Industries Dinner

Ilse Silten Memorial Fund for Research in Immunology

R. G. Silten

**The Klara and Larry Silverstein Fund for Pediatric Asthma and
Allergy Research and Treatment**

2013 New York Real Estate & Construction Industries Dinner

Amy Simkowitz-Rogers Fund

Sara Simkowitz, Thomas Rogers and Lucy & Isidore Simkowitz

The Roselyn Simon Memorial Fund for Asthmatic Children

Brian Simon, Randy Simon, Robert Simon, MD, Gary Steiner and
Rabbi Baruch Cohon

Samuel W. Spain Endowment for Excellence in Graduate Education

Mrs. Goldye M. Spain

Steven Spinola Fund for Infectious Diseases

1988 New York Real Estate & Construction Industries Dinner

Conrad D. Stephenson Laboratory for Research in Immunology

1981 New York Real Estate & Construction Industries Dinner

Leonard and Shirley Sterling Research Fund

Leonard and Shirley Sterling

Michael & Eleanore Stobin Laboratory for Pediatric Research

Eleanore & Michael Stobin

**Burton M. & Rita Tansky Fund for Research on the Influences of
Viruses on the Immune System**

1988 New York Retail & Fashion Industries Dinner

The Owen D. and Jennifer B. Thomas Research Fund for Immunology

2000 New York Real Estate & Construction Industries Dinner

Tinkel-Wolfson Research Fund in Basic Immunology

Dr. & Mrs. Alexander Tinkel

The Ralph Tornberg Endowed Asthma Research Fund

Barbara Tornberg, Family & Friends

The Ronald Townsend Fund for Morgridge Academy

Ronald Townsend

Marsha & Kenneth L. Tucker Library Fund

Marsha & Kenneth L. Tucker

The Hal J. and Shari Upbin Fund for Immunology Research

2001 Retail & Fashion Industries Dinner

Van Pelt Foundation Research Fund

Directors of the Van Pelt Foundation

Vestal Triage Room

Maxine & Don E. Vestal

**The Mark A. and Lisa J. Walsh Fund for Immunology and
Allergy Research**

2001 New York Real Estate & Construction Industries Dinner

Mary Nan West Memorial Fund

2001 San Antonio Dinner

**Thomas D. Welch Memorial Fund for Antioxidant Research in Lung
and Immune Diseases**

1997 New York Real Estate & Construction Industries Dinner

Samuel L. Westerman Immunology Research Fund

Trustees of the Samuel L. Westerman Fund

Medora White Research Fund

Family & Friends, Dallas, Texas

**The Helen Wohlberg & Herman Lambert Laboratory for
Pharmacokinetics Research**

Helen Lambert

Melvin & Elaine Wolf Pediatric Fund

Melvin & Elaine Wolf Foundation

Sidney A. Wolff Patient Education Program

Joseph C. & Clare F. Goodman Memorial Foundation

Wu & Ng Families Fund for Rehabilitation

Chin Hon & Pik Lin Wu

Allan & Joyce Zidell Tuberculosis Research Laboratory

Joyce & Allan Zidell

Ina Zipper Memorial Fund for Immunological Research

Family & Friends

**The Natalie V. Zucker Research Center for Women Scientists –
An Endowed Fund to Support Women Doctors and Researchers**

Dr. Natalie V. Zucker

**Zuckerman Family/Canyon Ranch Structural Biology/
Crystallography Lab**

Mel Zuckerman & Family & Canyon Ranch

Research and Educational Support

The following corporations, foundations and organizations provided research grants, contract and educational support for a variety of investigators and laboratories at National Jewish Health.

Actellon Clinical Research Inc.
Aeolus Sciences Inc.
Alamosa County Public Health Department
Alpha One Foundation Inc.
American Lung Association
Amgen Inc.
Anacor Pharmaceuticals, Inc.
Astra Zeneca Pharmaceuticals LP
Bayer HealthCare Pharmaceuticals Inc.
Boehringer Ingelheim Pharmaceuticals, Inc.
Boettcher Foundation
Cancer League of Colorado, Inc.
Chiesi Farmaceutici S.p.A.
Children's Hospital Philadelphia
Colorado Department of Public Health & Environment
Centers for Disease Control and Prevention
Cystic Fibrosis Foundation
Cystic Fibrosis Foundation Therapeutics
Duke University
Emory University
Fibrogen, Inc.
FAMRI
Genentech Inc.
Gilead Sciences, Inc.
Glaxosmithkline Research & Development LTD

Health Resources and Services Administration
Healthy Lifestars, Inc.
Hershey Medical Center
Howard Hughes Medical Institute
Icahn School of Medicine at Mount Sinai
Intermune, Inc.
Janssen Research & Development, LLC
Juvenile Diabetes Research Foundation International
La Jolla Institute for Allergy Immunology
March of Dimes
Merck & Co, Inc.
Multiclonal Therapeutics, Inc.
N30 Pharmaceuticals LLC
National Sleep Foundation
National Institutes of Health
Novartis Pharmaceutical Corp.
Oak Ridge Associated Universities
William and Ella Owens Medical Research Foundation
Patient-Centered Outcomes Research Institute
PeerView Institute for Medical Education
Pennsylvania State University
Pfizer Inc.
PneumRx, Inc.

Pulmonary Fibrosis Foundation
Questcor Pharmaceuticals, Inc.
Rheumatology Research Foundation
Samsung Medical Center
Skippy Frank Translational Medicine & Life Sciences Fund
State of Colorado
University of California, San Francisco
University of Colorado Denver
University of Illinois
University of Illinois at Chicago
University of Nebraska Medical Center
University of North Carolina
University of Pittsburgh
University of Utah
University of Wisconsin
U.S. Department of State
VA Eastern Colorado Health Care System
Vertex Pharmaceuticals
WaferGen Biosystems, Inc.
Wake Forest University
Yale University

National Jewish Health Events

Across the country in fiscal year 2015, people came together to celebrate National Jewish Health, its mission and its supporters.

CALIFORNIA

Bella Sera in the Desert

Chair

Debbie Breslawsky
Founders Committee Member

Madeleine Larson

Committee

Cynthia Flora

Beverly Lavin

Jewel Lucken

Marcia O'Bryan

Los Angeles Breath of Life Golf Classic

Honoree

Murray Fischer, Attorney-at-Law

Co-Chairs

Anthony Behrstock, Commonwealth

Land Title

David Sonnenblick, Sonnenblick-
Eichner Company

Los Angeles Professional Services

Black and White Ball

Honorees

George P. Blanco, Avant Advisory Group

Sunnie S. Kim, Hana Financial, Inc.

Dinner Co-Chairs

Ronald Friedman, Marcum LLP

Robert K. Lewin, CIT Trade Finance

Debbie Steinberg

Honoree Co-Chairs

Jim Davidson, Avant Advisory Group

Rosario Jauregui, Hana Financial, Inc.

Michael Ozawa, Avant Advisory Group

COLORADO

Aspen Bella Sera

Presented by

Nancy and Richard Rogers

Honorees

Wilma and Stuart Bernstein

Suellen and Melvyn Estrin*

Marlene and Fred Malek

Co-Chairs

Louise and David Gitlitz

Kristen and Marc Holtzman

National Jewish Health Golf Classic

Chair

Marc Steron, Shanahan's

Committee

R. Stanton Dodge, Dish Network

David Engleberg, Paragon Investment

Michael Harms, ICON Venue Group

Marc Paolicelli, RK Mechanical

Laszlo Pook, National Jewish Health

Dan Raap, SimplexGrinell, LP

Eddie Robinson, Robinson Management

Meyer Saltzman, RubinBrown, LP

Aaron Wiebelhaus, Turner

Construction Company

Hoops & Hoopla

Coach Committee

Denise Cito, Consolidated Electrical

Distributors

Peter Fox, Trautman & Shreve Service, Inc.

William Gregor, Mortenson Construction

Jerry Laflen, BKD, LLP

Ashley Lyon, RJM Construction

Ward Mahanke, TST Inc. of Denver,

Consulting Engineers

Tom Tarver, Greiner Electric

Ryan Wilson, GE Johnson Construction
Company

Kris Wintroub, Greiner Electric

FLORIDA

New Directions for Women – Florida

Co-Chairs

Rhona Guberman

Janet Verdiglione

Committee

Kathy Fryburg

Judy Haas

Dolores Hartzmark

Anne Jacobson

Lisa Jensen

Bobbi Kalmanson

Carole Vollman Mahler

Jane Mandell

Linda Myrick

Myrna Norwitz

Gleanna Robbins

Arleen Roberts

Donna Robins

Sally Rossi-Rosenberg

Lila Siegel

Sheila Stern

Shirley Stern

Barbara Tornberg

Elaine Weinberg

Scarlet Weiss

GEORGIA

Peter J. Mallen Memorial

Atlanta Golf Outing

Hosts

Arthur M. Blank

Howard Halpern

Robert I. Paller

ILLINOIS

New Directions Luncheon for Women –

Chicago

Committee

Eleni Bousis

Kay Bucksbaum

Cindy Franklin

Suzanne Friedman

Sharon Goldman

Martin Kozak

Susan Kozak

Susan Levine

Barbara L. Morgenstern

Gloria Rosenbaum

Billie Ross

Gail Shaps

Mark E. Shure

Maureen Shure

Natalie Stern

Elisabeth Szegho

Lois Zoller

NEW MEXICO

New Mexico Spirit of Achievement Awards Dinner

Honorees

The Honorable Mayor Richard J. Berry and
First Lady Maria Berry

John P. Salazar, Esq.

Dr. Peter Winograd and Dr. Kathie Winograd

Chair

Marcia Hembree, Bank of Albuquerque

Treasurer

Valerie Dodd, CenturyLink

Committee

Adelmo Archuleta

Susan Broersma

Dale Dekker

Christine & Joe Di Gregorio

Joanne Fine

Harris Hartz

Debbie Johnson

Edward Lujan

Sherman McCorkle

Julie Morgas Baca

Michael Stanford

Lynn Trojahn

JoLou Trujillo-Ottino

Robin Zimmeroff

NEW YORK

Financial Industries Dinner

Honoree

Jeffrey J. McLane, Bank of America, N.A.
Merrill Lynch, Pierce, Fenner &
Smith Incorporated

Dinner Chair

Joseph P. Powers, Bank of America, N.A.
Merrill Lynch, Pierce, Fenner &
Smith Incorporated

Honorary Chair

William D. Brewer, Winston & Strawn LLP

Inductee of Trustee

W. Craig Stillwagon, PNC Business Credit

Fund to Cure Asthma Golf Tournament

Golf Tournament Co-Chairs

Robert E. Helpern, Tannenbaum Helpern
Syracuse & Hirschtritt LLP

Stephen B. Siegel, CBRE

Chair Emeritus

Samuel B. Lewis, SBL Property
Consultants, LLC

Fund to Cure Asthma Founders

Nancy & James Berry Hill

Marjorie & Stephen Raphael

The Sky's The Limit Benefit Cocktail Party – AIR Society

Honoree

Michael Lehrman, Cantor Commercial
Real Estate

Co-Chair and Founding Member

Roger A. Silverstein, Silverstein
Properties, Inc.

Co-Chair

Stacey Silverstein

Honorary Chairs

Richard J. Mack, Mack Real Estate Group

Jason D. Pizer, Trinity Real Estate

Peter G. Riguardi, Jones Lang LaSalle
Americas, Inc.

Michael A. Rodriguez, Alliance Building
Services

Chair Emeritus and Founding Member

Kathy A. Chazen, CLU, ChFC, National
Financial Networks LLC

Co-Chair Emeritus

Peter Galperin, Galperin Design, Inc.

Founding Members

Michael Comras, The Comras Company

Bruce Dobozi, MD

Keith Locker, Inlet Capital, LLC

Stacey Locker, Delete Blood Center

Jeffrey L. Rubin, HUB International

Northeast Limited

WASHINGTON, DC

Capital Area Breath of Life Golf Classic Committee

Michael Cornfeld, Heritage Investors

Mark S. Goldstein, Paley Rothman

Solvin Gordon, Gordon Insurance

Robert Keats

Justin Magazine, Savills LLC

Frank Paulson, Borger Management

Dale Schuble, Schuble Family Foundation

Andrew Seested, Sandy Spring Trust

Gary Silversmith, P&L Investments LLC

Marc Wertheimer, Selzer Gurvitch Rabin

Wertheimer Polott & Obecný, P.C.



The National Jewish Health Night and Day Golf Classic in Denver raised \$160,000 for Morgridge Academy on Aug. 2-3, 2015. From left: Jack Thompson; Marc Steron, National Jewish Health Board Member and Event Chair; Charlie Cartwright; and Mark Boguniewicz, MD, National Jewish Health Department of Pediatrics Professor.



The Spirit Achievement Award Dinner on May 21, 2015, in Albuquerque raised \$48,150 for National Jewish Health. From left: Samantha Sengel and Dr. Kathie Winograd of Central New Mexico Community College and Dr. Peter Winograd of the University of New Mexico.



The 2015 Los Angeles Professional Services Black and White Ball honoring George P. Blanco, Avant Advisory Group, and Sunnie S. Kim, Hana Financial, Inc., raised nearly \$400,000 to support clinical care, research and educational programs at National Jewish Health on Saturday, June 6, 2015.

Beaux Arts Ball

Nearly 1,100 guests came together for A Wickedly Beaux Arts Ball on Saturday, February 21, 2015. This annual black-tie event raised \$1.9 million for National Jewish Health, including \$500,000 for our eczema and allergy programs. The event was held at the Hyatt Regency Denver at Colorado Convention Center.

Grand Marshal Honorees

Lindsey and Stanton Dodge
Dianne Eddolls and Glenn Jones*
Leslie and Noel Ginsburg
Elaine and Kevin Kauffman

Co-Chairs

Kathy and Ted Brown
Brad Busse
Faye and Steve Demby
DiAhndra Diamond and Alex Topelson
Robin and Cole Finegan
Diane and Doug Robinson
Shelly and Richard Sapkin

Executive Committee

Sue and John Bolger
Sunny and Norman Brownstein
Robin and Steven Chotin
Jennifer Crick and Justin Cooper
Cathy and Peter Dea
Arlene and Barry Hirschfeld
Kristen and Marc Holtzman
Rebecca and Lewis Kling
Bonnie and David Mandarich
Carrie and John Morgridge
Shari and Matt Most
Shereen and Michael Pollak
Linda and Rich Schierburg
Susan Juroe Schonbrun and
Michael Schonbrun
Debbie and Don Silversmith
Penny and Jack TerHar
Ailyn and Jason Uyeda

Leadership Committee

Evi and Evan Makovsky
Essie and Jordon Perlmutter
Susan and Eddie Robinson
Geri and Meyer Saltzman
Kelly and Marc Steron
Ellen Stewart and Donald Vancil
Meghan and Evan Zucker

Presenting Sponsor

Morgridge Family Foundation

Gold Sponsors

The Anschutz Foundation
Anne and Rich Baer
Brownstein Hyatt Farber Schreck
Clear the Air Foundation
DIRECTV
Lindsey and Stanton Dodge
Jones International, Ltd.
K.P. Kauffman, Inc.
MDC Richmond American Homes Foundation
Noble Energy, Inc.



Pictured from left to right: 2015 Beaux Arts Ball Grand Marshals Stanton and Lindsey Dodge; Glenn Jones and Dianne Eddolls; National Jewish Health President and CEO Michael Salem, MD; Grand Marshals Leslie and Noel Ginsberg; and Elaine and Kevin Kauffman.

1,050

GUESTS WHO ATTENDED
THE 2015 BEAUX ARTS BALL

A Winter's Evening

New York Real Estate & Construction Industries Dinner Dance

The 45th Real Estate and Construction Industries A Winter's Evening Dinner Dance on Saturday, December 13, 2014, raised \$2 million for National Jewish Health. Industry leaders came together to honor Ric Clark of Brookfield Property Partners at the black-tie gala. The event also established The Ric Clark Fund for Cutting-Edge Pilot Studies and Bridge Research.

Honoree

Ric Clark, Brookfield Property Partners

Dinner Chairs

John E. Zuccotti, Brookfield Property Partners
Jonathan L. Mechanic, Fried, Frank, Harris,
Shriver & Jacobson, LLP

Executive Chair

Wendy M. Siegel

Dinner Co-Chairs

Leonard Boxer, Stroock & Stroock &
Lavan, LLP
Martin S. Burger, Silverstein Properties, Inc.
Marty Cohen, Cohen & Steers, Inc.
Melissa J. Coley, Brookfield Property Partners
Andrew Davidoff, Emmes Group of Companies
Joseph A. DeLuca, Joseph A. DeLuca, Inc.
Dennis H. Friedrich, Brookfield
Property Partners
Marc Holliday, SL Green Realty Corp.
Robert J. Ivanhoe, Greenberg Traurig, LLP
James D. Kuhn, Newmark Grubb Knight Frank

Charles Kushner, Kushner Companies
Jared C. Kushner, Kushner Companies
Bruce E. Mosler, Cushman & Wakefield, Inc.
Lee S. Neibart, Ares Management LLC
Peter G. Riguardi, Jones Lang LaSalle
Stephen B. Siegel, CBRE
Larry A. Silverstein, Silverstein Properties, Inc.
Lisa H. Silverstein, Silverstein Properties, Inc.
Roger A. Silverstein, Silverstein
Properties, Inc.
Norman Sturmer, MHP Real Estate Services

Honoree's Circle

Brookfield Property Partners
Michele and Marty Cohen
The Feil Family
Fidelity National Title Insurance Company
Fried, Frank, Harris, Shriver & Jacobson LLP
Silverstein Properties, Inc.

Leaders

Ares Management, LLC
CBRE
Chicago Title Insurance Company
Ric Clark

Cushman & Wakefield, Inc.
Roxana & Andrew Davidoff
Extell Development
Fetner Properties
Mindy and Jonathan Gray
Greenberg Traurig LLP
HFZ Capital Group
JD Carlisle Development Corp.
Jones Lang LaSalle
Joseph Hage Aaronson, LLC
JTC Foundation
The Kuhn Family
The Kushner Companies
James T. Lee Foundation/Wendy &
Stephen Siegel
Linklaters LLP
The Litwin Foundation Inc.
Meringoff Equities, Inc.
Newmark Grub Knight Frank
Northwood Investors
RBC Capital Markets
RFR Holding Corporation LLC
RXR Realty
Mark Siffin
SL Green Realty Corp.
TD Securities LLC
Lisa & Mark Walsh
Wells Fargo Bank, N.A.

Patrons

5 Penn Plaza LLC
I. Chera & Sons Foundation, Inc.
Cleary Gottlieb Stern & Hamilton LLP
Eastdil Secured, LLC
Eastgate Realty Corporation
First American Title Insurance Company
The Holliday Foundation
Meridian Capital Group
Murray Hill Properties LLC
Orda Management



Pictured from left to right: A Winter's Evening Dinner Co-Chair Leonard Boxer; National Jewish Health President and CEO Michael Salem, MD; Executive Chair Wendy M. Siegel; Dinner Co-Chair Larry A. Silverstein; Honoree Ric Clark; Dinner Chair Jonathan L. Mechanic; and National Jewish Health Board Chair Rich Schierburg.

Chairman's Award

The Chairman's Award for Special Achievement is presented by the Chair of the Board of Directors to recognize those who have made exceptional contributions to National Jewish Health.

2015

Murray D. Fischer

2013

Anne & Norman K. Jacobson
Neva & Marvin I. Moskowitz

2011

Boettcher Foundation
Adolph Coors Foundation
Kenneth L. Tucker

2010

Molly Blank
H. A. & Mary K. Chapman
Charitable Foundation
Mrs. Frances B. Cohen
Brian Greenspun

2008

Edelstein Family Foundation
Mrs. Edith S. McAllister
Milton Schneiderman

2006

Doug & Dale Anderson
Bella Feinstein
Alex Fryburg
Rachel Kodanaz
Taner Kodanaz
Steve G. Schorr

2005

Amy M. Murnick, Jay M. Murnick
& Lee S. Murnick (New York
AIR Society)
Myra Schaps
Van Pelt Foundation

2004

Grand Aerie Order of Eagles
C.L.C. Kramer Foundation
Armstrong McDonald Foundation
Abraham & Sonia Rochlin
Foundation

2003

Carol Aaron
Philip Leitman
Lucille Raphael
Dale & Joseph Schuble
Ralph Tornberg

2002

Daniel Freed
Irma Jacobson
Jeffrey H. Kapor
Samuel Lewis
Robert Paller
Lila Siegel
David Sonnenblick

2001

Joan & Stanford Alexander
Herbert L. Ash, Esq.
Bruce H. Corbin
John Knott
Ambrose Monell Foundation
Vickie & Trygve E. Myhren

2000

Evelyn Best
Paul R. Charron
Sherman McCorkle
Howard Michnick
Milton Morris

1999

Carole & Albert Angel
Marianne Cohn
Roger Gibson
David Liniger
Samuel J. Rosenfeld
Melba Steeg

1998

Maurice Austin
William Gold II
Mike O'Callaghan
Ron Ruskin
Allan Zidell

1997

Joseph J. Carroll
Walter F. Imhoff
Donald W. Hoagland
Wendy Siegel
William D. White Jr.

1996

Leonard Boxer
Larry Buchanan
Kenneth Chirba
Cary Marmis
Henry Zarrow
Jack Zarrow

1995

Joseph Berenbaum, Esq.
Sunya Kronstadt
Michele S. Marvins
New York AIR Society

1994

Robert L. Mettler
Carol D. Nichols
Randy Rutherford

Lorber Award

The Arthur B. Lorber Award for Distinguished Service, the highest honor at National Jewish Health, recognizes singular achievement in helping to advance medical science. Under Arthur Lorber's leadership, the Sheltering Home at National Jewish Health grew from an orphanage into the premier treatment and research center for respiratory diseases in the United States.

2012

The Honorable Daniel K. Inouye,
U.S. Senator

2010

Michael & Iris Smith

2008

Norman Brownstein, Esq.
Wendy Siegel

2004

Herbert L. Ash

2002

The Fund to Cure Asthma
Nancy & James Berry Hill
Marjorie & Stephen Raphael

2001

Albert D. Angel

2000

Sunya P. Kronstadt

1999

Robert L. Mettler

1997

Carol D. Nichols

1996

Peter M. Henson

1995

Burton M. Tansky

1994

Larry A. Silverstein

1993

Leonard M. Perlmutter

1991

J. Peter Grace

1990

Philippa Marrack, PhD, &
John Kappler, PhD

1989

Conrad D. Stephenson

1988

Cecil Green & Howard V.
Rickenberg, PhD

1987

Richard S. Farr, MD

1986

Robert L. Silber & David S. Touff

1985

Arthur Robinson, MD

1984

Dollie & Jack Galter

1983

Richard N. Bluestein

1982

Andrew Goodman

President's Award

The President's Award, presented by the President of the institution, pays tribute to business and philanthropic leaders whose support goes far beyond the usual to promote the mission and vision of National Jewish Health.

2014

William Gold II
Philip H. Karsh
Edward A. Robinson

2013

The Hearst Foundations
Dr. Antonio J. L. Simoes

2011

Roger A. Silverstein
Allan Zidell

2010

Rich Baer
Natalie Zucker

2009

Diane & Charles Gallagher
Family Foundation

2008

Monfort Family Foundation

2005

Myra Levy
Sherman McCorkle
Drs. Harold & Mary Zirin

2003

Thomas M. Flexner
James D. Kuhn
Milton Morris
Wendy Siegel

2002

Molly Blank

2001

Seryl & Charles Kushner

2000

Louise & Richard Alderson

1999

The Honorable Ben Nighthorse
Campbell, U.S. Senator

1998

Norman Brownstein, Esq.

1996

Alan Landsburg

Legacies of Hope

The Legacies of Hope is a society established to recognize all those supporters who have included National Jewish Health in their estate and financial plans, including a will, charitable gift annuity, trust or insurance policy. These gifts will live on for generations, helping to ensure that National Jewish Health will continue its mission.

The following names are new Legacies of Hope members who added National Jewish Health to their estate plans between July 1, 2014, and June 30, 2015.

Arizona

Anonymous
Barbara J. Mattingley
Sam & Miriam Sterk

California

Anonymous (3)
Dr. Louis Bernstein
Joan E. Gantz
James E. Grindlinger
Irwin Halpern
Miriam Lasker
John C. (Jack) Shaw & Ellen K. Shockro
Phillip D. Winn

Colorado

Anonymous (2)
William E. Arnold
Howard Badgad
Sally L. Bartalot
Dan C. & Anna R. Edelen
Charles R. & Sue E. Farris
Aaron & Barbara Fleck
Adrienne Leonard
Martin & Jo Ann Semple
James B. Wolf

Florida

Anonymous
Lori Banikin
Howard A. & Dorothy G. Berger
Harry & Deanna Katz
Barbara Tornberg
Gilbert Wegad
Sara Sacks Wegad

Michigan

Anonymous
Lenyo Family
Patricia Ponte
Concetta V. Ross
Dr. Susan Wainstock & Phillip Zelickman
The Harold Zepelin Living Trust

Nebraska

Margaret A. Allington

New Mexico

Anonymous
Eric Hoover & Deborah Gaynor

New York

Joseph J. & Barbara Ann Carroll

North Carolina

Anonymous

Pennsylvania

Annette & Daniel Lutz
Antonio J. L. Simoes

Texas

Anonymous
David Mishkin

Wisconsin

Lois M. Kaster
Mary E. Kelly

Wyoming

Peter S. & Susan E. Ordway

Bequests

Those who remember National Jewish Health in their estate plans leave a lasting legacy in support of our programs. During fiscal year 2015, the friends listed below remembered National Jewish Health with bequests that will further our mission.

Arizona

Joan Buchalter
Jack E. Schuss
Wanda N. Wright

Arkansas

Alvin S. Tilles

California

Aaron Brunswick
Florence E. Buckley
Astrea Garnet Gorin
Gloria L. Johnston
Saul Klein
Arthur & Anne Lincoln
Muriel McMurtrey
Martin Molof
Harry W. Ofshay
Herbert Posnack
Florence Ross
Jerome & Goldie Rothstein
Hannelore Spielman
Fran Harris Tuchman
John & Winona Valentine

Colorado

Richard H. Alderson
M. Frances Bennett
Lillian Bloom
Shirley M. Duman
Marie E. Ewing
Wayne & Shirley Gale
Julia A. Giles
Arthur B. Hayutin
Rona Levin
Lillian Nilsson
Faye B. Parrish
Vernon L. Sachs
Kathleen B. Urso
Veldene A. Valis
John J. Wehman

Delaware

Henry Nord

Florida

Milton M. Galperin
Jules Jacobsen
Irma G. McGovney
Alice Schneider

Georgia

Bessie Nissenbaum

Illinois

Nathan Applebaum
Marian W. Bassett
Jeanette Chalet
Harold Heyward
Ruth Nassau
Morris Thikoll

Indiana

Marian Loeb Kochman

Maine

Jessie G. Baig

Maryland

David Kates
Benjamin A. King

Massachusetts

Morton J. Levinson
Nathan A. Schindler

Michigan

Lynelle Marolf

Minnesota

DeWayne T. Chesley

Mississippi

Gladys Schwabe

Missouri

Robert B. Kahn

Montana

Arnold I. Finklin
Florence A. Showell

Nebraska

Rosalie Cohen
Rabbi Myer S. Kripke

Nevada

David Eddings

New Hampshire

Benjamin Cohen
Godfrey F. Klein

New Jersey

Endowment Fund of the
Jewish Federation of
Monmouth County
Ethel and Alex Kargman
Gerda Petzall
Sidney & Esther D. Rose
Larry Stock

New Mexico

Rosina Patterson

New York

Nancy Bernhard
Ira Isadore Brier
Esty Epstein
Earle Muroff
Maurice J. Oringer
Jordan H. Prince
Virginia Stokes
Jane Verrall

North Carolina

Jonathan J. Kammen
Jerome Shain

Ohio

Arnold H. Lazarus
Lina Weintraub Memorial
Fund of the Jewish Community
Federation of Cleveland

Oklahoma

Dora R. Roberts

Oregon

William H. & Jeaninne Bloom

Pennsylvania

Rosalind Biskind
Phyllis A. Dempsey
Benjamin Garsten
Fernal R. Marlier

Rhode Island

Anonymous

South Dakota

Ken & Lois Borecky Fund
National Jewish Center for
Immunology of the
South Dakota Foundation

Tennessee

Myra Sue Ellis

Texas

Jacquelyne Branch
Larry A. Dornburg
Charles Eilenberg
Leonard L. Gorin
Adolf & Kaethe Wechsler
Memorial Fund
Bank of America, N.A., Trustee

Virginia

Elizabeth Ann Cawood
Grace Siegel

Honor Roll of Philanthropy

Lifetime Achievement Societies

The Frances Wisebart Jacobs Founder's Society, the Chairman's Society and the President's Society pay tribute to the lifetime giving of individuals, foundations and corporations whose steadfast support serves as inspiration to others and whose dedication has helped make National Jewish Health a world-renowned institution.

Frances Wisebart Jacobs Founder's Society

\$10,000,000+

Auxiliaries of National Jewish Health
Estate of David & Leigh Eddings
John D. & Carrie Morgridge/
Morgridge Family Foundation

The Chairman's Society

\$5,000,000-\$9,999,999

Anonymous
Michele & Martin L. Cohen
Estate of Milton Morris
Iris & Michael S. Smith
Tuchman Family Foundation

President's Society

\$1,000,000-\$4,999,999

Estate of Richard H. Alderson
Anonymous
Anonymous
Estate of Joe J. Ballard
Sally L. Bartalot
Estates of Madeline Beno & Girard J. Beno
Estate of Evelyn Best
Molly Blank*
Estate of Anna Marie A. Blum
Boettcher Foundation
Children's Hospital Foundation
Children's Miracle Network
Frances B. Cohen*
The Colorado Health Foundation
Adolph Coors Foundation
Estate of Hazel M. Crismon
Daniels Fund
Estate of Dr. Larry A. Dornburg
Estate of Esther B. Dunlap
Edelstein Family Foundation
Estate of Beatrice M. & Miguel G. Elias
ExxonMobil Foundation

Estate of Rose Galin/Estate of
Michael E. Felsher Trust #2
Estate of Oscar H. Friedman
Estate of Joseph H. Fuchs
Estate of Esther Galinsky
The Diane and Charles Gallagher
Family Foundation
Mr. & Mrs. Jack Galter*/Galter Foundation
Estate of Virginia L. Garrison
Estate of Grace A. George
Alexander Goldstein Sr. and Willie Mae
Goldstein Family Foundation Inc.
Nena & Andrew Goodman*
Grand Aerie Fraternal Order of Eagles/
Max Baer Heart Fund
Mrs. Barbara Greenspun/Brian Greenspun/
Greenspun Family Foundation
Estate of Mildred S. Hansen
The Hearst Foundations
Albert & Ethel Herzstein Charitable
Foundation
Estate of Lewis Humphreys
Estate of Irma B. Jacobson
Anne & Norman K. Jacobson
Kaiser Permanente Colorado
Estate of Rose I. Kalman
Leah Kayem*
William E. Keller
Estate of Veola S. Kerr
Rebecca & Lewis M. Kling
Estate of John J. Kohberger
C. L. C. Kramer Foundation
Sunya P. Kronstadt*
Charles and Seryl Kushner Family Foundation
Estate of Burton H. Ladensohn
Estate of Helen Lambert
Estate of Myra Levy
Estate of Grace M. Lieberthal
Estate of Dorothy J. Lord
The Marcus Foundation, Inc.
Estate of Rudolf E.S. Mathias

Armstrong McDonald Foundation
Estate of Selma Merkin
Estate of Beatrice Mersereau
Estate of Irma G. Miller
The Ambrose Monell Foundation
Monfort Family Foundation
Estate of Norma W. Moon
Neva F. & Marvin I. Moskowitz
Estate of Mary E. Murdock
Theodore* & Maxine B. Murnick
Joyce L. & Lee S. Neibart
Phyllis & Lewis C. Pell
Estate of Rose B. Posner
Marjorie & Stephen E. Raphael
Kristin & Blair E. Richardson
Veda H. Ritter*
Abraham and Sonia Rochlin Foundation
Estate of George W. Rose
Estate of David M. Rosenbaum
Estate of Lizzi Rothenstreich
Salon National La Boutique 8 & 40
Klara & Larry Silverstein
The Silverstein Family Trust
Dr. Antonio J. Simoes
Estate of Lena Strauss
Sunshine Chapter
Maxine A. & Don E. Vestal*
Wal-Mart Stores, Inc.
Wollowick Family Foundation
Estate of William Woolner
Hal* & Mary F. Zirin
Meghan & Evan H. Zucker
Natalie V. Zucker*/Zucker Family Trust

Honor Roll of Philanthropy

Annual Giving Circles

National Jewish Health is grateful for the generous contributions from individuals, corporations and foundations across the country and around the world. The following is a list of those who made gifts of \$500 or more in fiscal year 2015.

\$1,000,000 or More

Michele & Marty Cohen (NY)
Daniels Fund (CO)
Kaiser Permanente Colorado (CO)
The Marcus Foundation, Inc./
Mr. & Mrs. Bernard J. Marcus (GA)
Klara & Larry Silverstein (NY)
The Silverstein Family Trust (NY)
Meghan & Evan Zucker (CO)

\$500,000-\$999,999

Charles M. & Faye G. Schayer Charitable
Foundation (CO)

\$100,000-\$499,999

Anonymous (CO)
Karen Arnold (TX)
Antoinette E. & Herman Boehm
Foundation (NY)
Garthe Brown and Grace L. Brown Fund II of
The Oregon Community Foundation (OR)
Mr. & Mrs. Norman Brownstein (CO)
Carolyn S. Bucksbaum (IL)
Edelstein Family Foundation (MN)
The John P. Ellbogen Foundation (WY)
The Feil Family Foundation/Charitable Lead
Annuity Trust Under the Will of Louis Feil (NY)
William E. Keller (NM)
Donald L. Kortz & Mary Lou Blackledge
Kortz (CO)
Mr. & Mrs. David Mandarich (CO)
Ambrose Monell Foundation (NY)
Morgridge Family Foundation/Carrie &
John D. Morgridge (CO)
Mr. & Mrs. Lewis C. Pell (NY)
Leonard & Alice Perlmutter Foundation/
Mr. & Mrs. Leonard Perlmutter (CO)
Mr. & Mrs. Edward A. Robinson (CO)
Sage Hospitality Resources/
Mr. & Mrs. Walter L. Isenberg (CO)
Mr. & Mrs. Donald Silversmith (CO)
Dr. Antonio J. L. Simoes (PA)
Strear Family Foundation, Inc. (CO)
Tuchman Family Foundation (CO)
Mr. & Mrs. Melvin Zuckerman (AZ)

\$50,000-\$99,999

Anschutz Foundation (CO)
Mr. & Mrs. James H. Brewster (CO)
Brookfield Property Partners (ON)

Barbara Ann & Joseph J. Carroll (NY)
Eugene F. & Easton M. Crawford Charitable
Lead Unitrust (CO)
The Crown Family (IL)
Fidelity National Title Insurance Company (FL)
Fried, Frank, Harris, Shriver & Jacobson
LLP (NY)
Thomas Gamel (CO)
Mona Goodwin (CO)
James E. Grindlinger (CA)
Harold & Rebecca H. Gross Foundation (CT)
Hyde Park Jewelers (CO)
The Johnson Family Fund (NY)
William T. Kemper Charitable Trust/
Mr. & Mrs. J. Mariner Kemper (MO)



Mr. & Mrs. Frank R. Krejci (NE)
Edith & James C. Lee (CO)
Dave & Gail Liniger (CO)
Theodore Z"l & Maxine B. Murnick (NJ)
Isidore C. & Penny W. Myers Foundation (CA)
William and Ella Owens Medical Research
Foundation (TX)
Abraham & Sonia Rochlin Foundation/
Heidi Rochlin (NV)
Mr. & Mrs. Richard R. Rogers (TX)
Leah R. & Alfred E. Schaefer Charitable
Foundation (TX)
Schramm Foundation (CO)
Walter Scott Foundation (WY)
Iris & Michael S. Smith (CO)
Turner Construction Co. Foundation (NY)
The Kal & Joyce Zeff Family Foundation/
Joyce Zeff* (CO)

\$25,000-\$49,999

Anonymous (OH)
Dr. & Mrs. David Amran (TX)
Marian Meaker Apteckar Foundation (TX)
Ares Management, LLC (CA)
Mr. & Mrs. Richard N. Baer (CO)
Bank of America (RI)
Howard A. & Dorothy Berger (FL)
Robert Black Charitable Foundation (NY)
Brownstein Hyatt Farber Schreck, LLP (CO)
Fred J. Brunner Foundation (IL)
Rebecca Runyon Bryan (AL)
Cantor Fitzgerald Securities (NY)
John W. Carson Foundation (CA)
CBRE (CA)
I. Chera & Sons Foundation, Inc. (NY)
Chicago Title Insurance Company (FL)
Ric Clark (NY)
Clear the Air Foundation (CO)
William & Sandra Condon Family
Foundation (CO)
COPD Foundation, Inc. (FL)
COPIC Medical Foundation (CO)
Cushman & Wakefield, Inc. (NY)
Cuvee Escapes (CO)
Herman Dana Charitable Trust (MA)
Roxana & Andrew Davidoff (NY)
Ralph G. Dille (CO)
DIRECTV Incorporated (CA)
The Drescher Foundation/
Mr. & Mrs. Jared M. Drescher (MD)
Jessie Ball DuPont Fund (FL)
Extell Development (KY)
Fetner Properties (NY)
First American Title Insurance Company (NY)
Richard and Susan P. Friedman Family
Foundation (NY)
Rose W. Gausman (PA)
GE Johnson Construction Company (CO)
Andrew Goodman Memorial Fund (NY)
Grand Aerie Fraternal Order of Eagles/
Max Baer Heart Fund (OH)
Mindy & Jonathan D. Gray (NY)
Greenberg Traurig, LLP (FL)
Greiner Electric/Mr. & Mrs. David
Greiner (CO)
Luisa & William Hansen (CA)
HFZ Capital Group (NY)
Hood-Barrow Foundation (TX)
JD Carlisle Development Corp. (NY)
Glenn R. Jones* & Diana Eddolls (CO)

Jones Lang LaSalle (NY)
Joseph Hage Aaronson, LLC (NY)
JTC Foundation (NY)
Mr. & Mrs. Lewis M. Kling (CO)
K.P. Kauffman Company Inc./
Mr. & Mrs. Kevin Kauffman (CO)
The Kuhn Family (NY)
Kushner Companies (NJ)
James T. Lee Foundation/
Wendy & Stephen Siegel (NY)
Elick & Charlotte Lindon Foundation (IL)
Linklaters LLP (NY)
The Litwin Foundation Inc. (NY)
Lowerre Family Charitable Trust (NY)
Diane Lynn Family Foundation Inc. (FL)
MDC Richmond American Homes
Foundation (CO)
Meringoff Equities, Inc. (NY)
Jeaneen E. Naifeh (OK)
Mr. & Mrs. William L. Nesbitt (CO)
Newmark Grubb Knight Frank (NY)
Noble Energy, Inc. (OK)
Northwood Investors/John Z. Kukral (NY)
Moses L. Parshelsky Foundation (NY)
The Jay and Rose Phillips Family
Foundation of Colorado (CO)
Marjorie & Stephen E. Raphael (FL)
RBC Capital Markets (NY)
Judy W. & B. Coleman Renick Jr. (TX)
Republic National Distributing Company (CO)
Mr. & Mrs. Blair E. Richardson (CO)
RFR Holding Corporation LLC (NY)
RXR Realty (NY)
Dr. Michael S. Salem (CO)
Salon National La Boutique Des Huit
Chapeaux et Quarante Femmes (FL)
The Schuble Family Foundation, Inc./
Dale Schuble (MD)
Mr. & Mrs. Martin Semple (CO)
Shanahan's Steakhouse (CO)
Mark Siffin (IN)
Stacey & Roger Silverstein (NY)
Skadden, Arps, Slate, Meagher &
Flom LLP (NY)
SL Green Realty Corp. (NY)
TD Securities LLC (NY)
Robert Mize & Isa White Trimble Family
Foundation Inc. (NY)
Wal-Dot Foundation (TX)
Lisa & Mark A. Walsh (NY)
Sherman L. Weitzmon (AZ)
Wells Fargo Bank, NA (NY)
Wheeler Foundation (NV)
Anne P. Young (CO)

\$15,000-\$24,999

Anonymous (IL)
5 Penn Plaza LLC (NY)
Avant Advisory Group (CA)
James E. Barlett (CO)
H. G. Barsumian, MD Memorial Fund (NC)
The Joan and Phill Berger Charitable
Fund (CO)
Gretel B. Bloch Charitable Trust (OH)

Capital One, N.A. (VA)
CIT Group (NY)
Cleary Gottlieb Stern & Hamilton LLP (NY)
Lindsey & R. Stanton Dodge (CO)
Eastdil Secured, LLC (NY)
Eastgate Realty Corporation (NY)
Dan & Anna Edelen (CO)
William H. Ellsworth Foundation (NY)
Mr. & Mrs. Sidney E. Forbes (MI)
Franciscan Friars of Holy Name Province
May Bonfils Stanton Memorial Fund (NY)
Joan E. Gantz (CA)
The Gart Companies/The Jerry Gart Family
Foundation (CO)
Max Goldenberg Foundation (IL)
H + L Architecture (CO)
The Frederic C. Hamilton Family
Foundation (CO)
Hana Financial Inc. (CA)
The Morris A. Hazan Family Foundation/
Lovee Arum (NV)
The Holliday Foundation (NY)
Mr. & Mrs. Marc L. Holtzman (CO)
J & S Audio Visual (CO)
JPMorgan Chase (TX)
Enid & Crosby Kemper Foundation (MO)
Kiver Foundation (NY)
Kowalski Family Foundation (CO)
Rita Krosney (NY)
The Alice Lawrence Foundation, Inc. (NY)
Lockton Companies of Colorado, Inc. (CO)
Loeb & Loeb, LLP (CA)
Mallen Family Foundation (GA)
Mr. & Mrs. Leslie A. Mendelson (CA)
Meridian Capital Group (NY)
Milken Family Foundation (CA)
Mortenson Construction (CO)
Murray Hill Properties (NY)
Orda Management (NY)
Otterbourg, Steindler, Houston & Rosen,
PC (NY)
Petunia Foundation (CO)
The PNC Financial Services Group (PA)
Red Apple Group (NY)
Concetta V. Ross (MI)
Savills Studley LLC (NY)
Linda & Rich Schierburg/Peregrine Group
Development (CO)
Shearman & Sterling (NY)
Sill-Terhar Motors Inc. (CO)
Robert R. Silverstone Marital Trust (CO)
Starr Associates LLP (NY)
Mr. & Mrs. David A. Stein (CO)
Stroock & Stroock & Lavan LLP (NY)
Taconic Investment Partners LLC (NY)
Barbara Tornberg (FL)
Earl and Elizabeth Toutz Trust (MO)
Trautman & Shreve Service, Inc. (CO)
Mary Jean and Oliver Travers
Foundation, Inc. (MD)
Tuberculosis Foundation of Virginia Inc. (VA)
USA Pro Challenge (CO)
Weil, Gotshal & Manges LLP (NY)

Paul R. & Anna Lee White Family
Charitable Trust (CO)
Winston & Strawn LLP (IL)

\$10,000-\$14,999

Anonymous (AZ)
Anonymous (KS)
Anonymous (NM)
Anonymous (NY)
Anonymous (PA)
ABM Janitorial Services/
American Building Maintenance (NY)
Ethel & Philip Adelman Charitable
Foundation (NY)
Margaret A. Allington (NE)
Margaret Sue & Harvey Allon/
Braddock Financial (CO)
Aon Foundation (IL)
Leon Apteckar Fund of the El Paso
Community Foundation (TX)
Sol and Lillian Ash Foundation, Inc. (NY)
Sandra Atlas Bass and Edythe & Sol G.
Atlas Fund Inc. (NY)
Berenbaum Weinshienk PC (CO)
Bethesda Foundation Inc. (MD)
Black Equities (CA)
George & Janelle Blanco (CA)
Blank Rome LLP (PA)
Serine Bonnist Charitable Lead Trust (WY)
Martin and Mary L. Boyer Foundation (IL)
Alison & Martin Burger (NY)
Dr. Edward Burka (MD)
Busse Family Foundation/Brad Busse (CO)
Cadwalader, Wickersham & Taft LLP (NY)
Cahill Gordon & Reindel LLP (NY)
Paul & Pearl Caslow Foundation (IL)
Century 21 Associates Foundation Inc. (NY)
The Kathy Chazen Family Charitable Trust (NY)
The Chotin Foundation/Steven &
Robin Chotin (CO)
CIBC World Markets Corporation (NY)
Community Holdings of Boulder, Inc. (CO)
Mr. & Mrs. Thomas Corley (CO)
Viola Vestal Coulter Foundation, Inc. (WA)
Mr. & Mrs. James Q. Crowe (CO)
Crystal Financial (MA)
James F. Davidson (CA)
Davis Polk & Wardwell (NY)
Delman Mortenson Charitable Foundation (VA)
Deloitte LLP (NY)
Dependable Cleaners (CO)
Design Works (CO)
Deutsche Bank (NJ)
The Doneger Group (NY)
Dan & Sallie Dutton Family Foundation (NV)
ECA Foundation, Inc. (CO)

Mr. & Mrs. Sydney Engel (NY)
Joyce Fefferman (NY)
First Nationwide Title Agency (NY)
Mr. & Mrs. Jeffrey L. Forbes (FL)
FTI Consulting, Inc. (MD)
GE Real Estate/Tim Campbell (CA)

Glenn Family Foundation/
Michael B. Glenn (MI)
Goldberg Kohn Ltd. (IL)
Gordon Brothers Group, LLC (MA)
Greenberg Traurig LLP (NY)
Hahn & Hessen LLP (NY)
Bruce & Rocky Haston (WY)
Haynes and Boone, LLP (TX)
HDR Architecture (CO)
The Helis Foundation (LA)
Hilco Valuation Services, LLC (IL)
Virginia Hill Charitable Trust (CO)
Holland & Knight LLP (FL)
Jack Resnick & Sons Inc. (NY)
James Partners LLC/Robert C. James (CA)
Mr. & Mrs. George E. Johnson Sr. (IL)
Johnson Controls, Inc. (CO)
The Karma Foundation Inc. (NJ)
Lois M. Kaster (WI)
Marilyn Katzman (TX)
Fritz & Adelaide Kauffmann Foundation (FL)
Alex Kaufman (CO)
Dr. A.J. Kauvar Foundation (CO)
Mr. & Mrs. Peter L. Koslow (FL)
Martin J. & Susan B. Kozak (IL)
KPS Capital Partners LP (NY)
Kramer Levin Naftalis & Frankel LLP (NY)
Harry Kramer Memorial Fund (NC)
Mr. & Mrs. Steven D. Kris (CO)
Lazard Frères & Co. LLC (NY)
Mr. & Mrs. Edwin Levine (FL)
Pamela G. Lichty & Don B. Lichty (HI)
Long View Systems Corporation USA (CO)
Maffei Foundation (CO)
Shelley Magness & Eric Head (CO)
Malek Family Charitable Trust/
Frederic & Marlene Malek (CO)
Marcum LLP (CA)
The Marshall Steves Foundation (TX)
Barbara J. Mattingley (AZ)
McGuireWoods (VA)
David & Laura Merage Foundation (CO)
Mr. & Mrs. G. Gilmer Minor III (VA)
Mizel Global Cultural Fund (CO)
Morgan Lewis & Bockius LLP (PA)
George & Julie Mosher Family
Foundation (WI)
Moss Adams, LLP (CA)
Bobbi Newman (IL)
Normandy Real Estate Partners (NJ)
Norton Rose Fulbright Canada LLP (QC)
Olmstead Properties (NY)
Parker, Hudson, Rainer & Dobbs LLP (GA)
Pema Foundation, Inc. (CO)
Dr. Murray Pepper & Honorable Vicki
Reynolds Pepper (CA)
Prime Finance Partners (NY)
Quality King Distributors (NY)
Mr. & Mrs. Allen I. Questrom (TX)
Mr. & Mrs. Gerald A. Quintana (NM)
Mr. & Mrs. George J. Records (OK)
The Renco Group Inc. (NY)
Resnick Foundation (CA)
Scott Richmond (KY)



Richter Consulting (IL)
Riemer & Braunstein LLP (MA)
Robinson Management, LLC/Mr. & Mrs.
Edward A. Robinson/Mr. & Mrs. Richard L.
Robinson (CO)
J Rudes, L'Agence and Feel the Piece by
Terre Jacobs (CA)
Irving Salem (FL)
Charles & Mildred Schnurmacher
Foundation Inc. (NY)
Mr. & Mrs. Robert H. Sewell (TX)
Maria S. Shapiro (NY)
Morton F. Silver 2005 Family Trust (NY)
The Sidney, Milton and Leoma Simon
Foundation (FL)
Skadden, Arps, Slate, Meagher &
Flom LLP (NY)
Daniel K. Smathers (CO)
John E. Smathers Jr. (MA)
Smith Richardson Foundation, Inc. (NC)
Kenneth F. Sokol (NV)
Squire Patton Boggs (OH)
Milton I. and Frances L. Stiefel Foundation (KS)
Stonehenge Partners, Inc. (NY)
Beth Sufian & Jim Passamano (TX)
TD Bank, N.A. (ME)
Tiger Valuation Services, LLC (MA)
Tishman Speyer Properties Inc. (NY)
Jerome E. Toffler Foundation (SD)
Total Renal Care, Inc./DaVita Inc. (WA)
UMB Bank Colorado (CO)
Vali Entertainment (NJ)
Harry W. Vicksman & Louis L. Vicksman
Charitable Trust (CO)
ViewHouse DTC (CO)
Vinson & Elkins LLP (TX)
Vornado Realty Trust (NY)
Gilbert Wegad (FL)
Sara Sacks Wegad (FL)
Wells Fargo Capital Finance (CA)
Melvin & Elaine Wolf Foundation Inc. (CO)

\$5,000-\$9,999

Anonymous (CA)
Anonymous (CO)
Anonymous (FL)
Anonymous (NM)
68 West Engineering, Inc. (CO)

Mr. & Mrs. Marshall A. Abrahams (CO)
Alliance Building Services (NY)
Mr. & Mrs. Theodore J. Alpert (CO)
Alpine Bank (CO)
Mr. & Mrs. Earle S. Altman (NY)
Ambassador Construction Inc. (NY)
ANB Bank (CO)
Anschutz Family Foundation (CO)
Arbor Commercial Mortgage (NY)
Arnold & Porter LLP (NY)
Atlas Capital Group, LLC (NY)
Howard Bagdad (CO)
Mr. & Mrs. Morris Bailey (NY)
Sandra A. Bass (NY)
BDO USA, LLP (CA)
Bender Foundation, Inc./Mr. & Mrs. Richard
Greenberg (DC)
Benjamin Maintenance (NY)
Mr. & Mrs. William D. Berghold (MT)
The Honorable & Mrs. Stuart Bernstein (CO)
Stephen & Mary Birch Foundation (DE)
BKD, LLP (MO)
Sheila M. Black & Russell Cranswick (CO)
Blum Family Foundation (CA)
Chris & Rachelle Bodnar (CO)
Dr. Laurie Michaels & David Bonderman (TX)
Mr. & Mrs. Dimitris Bousis (IL)
Mr. & Mrs. Drew K. Brownstein (CO)
Buchalter Nemer (CA)
Capital Business Credit, LLC (CA)
Carl Marks Advisory Group LLC (NY)
Cassidy Turley (MO)
Cator, Ruma & Associates, Co. (CO)
Cerberus Real Estate Capital
Management (NY)
The Donald & Carole Chaiken Foundation/
Mr. & Mrs. Donald Chaiken (CA)
Margaret & Jeff Chapin (MA)
The Chazen Foundation (NY)
Chelsea Hotels (NY)
Val & Steve Chin (UT)
Citigroup (FL)
Citizens Bank (RI)
The Clinic for Plastic Surgery (CO)
CoBiz Financial (CO)
Julie & Frank Cohen (NY)
Nancy Cohen & James Wason (CO)
Mr. & Mrs. Warren P. Cohen (CA)
Color Image Apparel Inc. (CA)
Commonwealth Land Title Insurance
Company (FL)
Community Health Charities of Colorado (CO)
The Covenant Foundation Inc. (GA)
Cowen Group (NY)
Crowe Horwath LLP (IN)
Cuvee Properties Fund Management, LLC (CO)
Mr. & Mrs. Constantine M. Dakolias (NY)
Dea Family Foundation/Mr. & Mrs. Peter
Dea (CO)
Deloitte Financial Advisory Services LLP (MA)
Delta Dental Plan of Colorado (CO)
Denver Health Foundation (CO)
Denver Museum of Nature & Science (CO)
Ruby Diamond Foundation (FL)

Direct Energy (PA)
 Duke Realty Corporation (IN)
 East West Bank (CA)
 Brandon Ehrhart (CO)
 EKS & H (CO)
 El Ad US Holding, Inc. (NY)
 Emmet, Marvin & Martin, LLP (NY)
 Encana Natural Gas/Encana Cares Foundation (CO)
 Evercore Partners Services East LLC (NY)
 Ezra Brutzkus Gubner LLP (CA)
 Falcon Investors (NY)
 Feiner Enterprises/Feiner Family Foundation/ Mr. & Mrs. Michael A. Feiner (CO)
 The Fine & Greenwald Foundation, Inc. (FL)
 Fineman West & Co, LLP (CA)
 Finnup Foundation Trust (KS)
 Firequench, Inc. (NY)
 Firstbank Holding Company (CO)
 Harmes C. Fishback Foundation (CO)
 Focus Management Group (FL)
 Fox Rothschild LLP (CA)
 Fox Rothschild LLP (PA)
 Patricia P. Fraser (CO)
 Mr. & Mrs. Alex Fryburg (FL)
 Ganga, Inc. (CA)
 GE Asset Management (CT)
 Getzler Henrich & Associates, LLC (NY)
 Mr. & Mrs. Roger Gibson (CA)
 Mary R. Gilbert Trust (NC)
 Mr. & Mrs. Noel D. Ginsburg (CO)
 Heller Goldberg (NY)
 R&M Goldberg Family (NY)
 Herman Goldman Foundation (NY)
 Alexander Sr. and Willie Mae Goldstein Family Foundation Inc. (TX)
 Judith A. Gordon (CA)
 Grant Thornton LLP (IL)
 The Gray Foundation (LA)
 Graybar Electric (CO)
 Great American Group (CA)
 Helen K. Groves (TX)
 Guggenheim Partners, LLC (CA)
 Hanmi Bank (CA)
 Hartz Mountain Industries Inc. (NJ)
 James Harvey (WI)
 Mr. & Mrs. Hugh H. Harvey (CO)
 The Morris A. Hazan Family Foundation/ Bucky A. Hazan (CA)
 Heffner Fund (OH)
 Mr. & Mrs. Robert E. Helpert (NY)
 Hercules Corp. (NY)
 Mr. & Mrs. A. Barry Hirschfeld (CO)
 Hirtle Callaghan & Co. LLC (AZ)
 Mr. & Mrs. Jeffrey L. Hochman (MO)
 Hogan Lovells US LLP (CO)
 Hogan Lovells US LLP (DC)
 Hothouse Carlin & Van Trigt LLP (CA)
 Host Hotels & Resorts LP (MD)
 Barbara J. Howard (FL)
 HSBC Bank USA, N.A. (NY)
 IBM International Foundation Matching Grants Program (NY)
 IMA Foundation (CO)

ISEC, Inc. (CO)
 JAMACO, LP (CO)
 Jeffer, Mangels, Butler & Mitchell LLP (CA)
 Jefferies Financial (CA)
 Joie Dutch, LLC (CA)
 Kaback Enterprises Inc. (NY)
 Suzanne T. & Irving D. Karpas Jr. Foundation Inc. (NY)
 Kaye Scholer, LLP (NY)
 Keats Family Foundation Inc. (FL)
 The Ethel & Allyn Kendis Family Charitable Trust (OH)
 Mr. & Mrs. Richard C. Kerns (GA)
 Keshet Foundation/Mr. & Mrs. Ron Zeff (CO)
 Keybank National Association (OH)
 Michael R. Klein & Joan Fabry (CO)
 Sidney Kohl Foundation, Inc. (FL)
 KPMG, LLP (TX)
 Mr. & Mrs. Peter A. Kudla (CO)
 Kuni Lexus of Greenwood Village (CO)
 John & Maria Laffin Trust (NC)
 Madeleine Larson (CO)
 Launch Pad Media Advisors, PC (CO)
 Lazarus Investment Partners LLLP (CO)
 The Learning Experience & The Weissman Family (FL)
 Shirley Lefkowitz (CA)
 Philip B. Leitman/NTM Information & Research, Inc. (FL)
 Lewan Technology (CO)
 Sheila & Sandy Lewis (NY)
 Liberty Global, Inc. (CO)
 Clyde Lieberman/SBC Global (CA)
 Mr. & Mrs. C. Ronald Livingston (CA)
 Locke Lord LLP (MA)
 Annette Lutz (PA)
 M & E 336-348 E 18th LLC (NY)
 M.X.F. Designs, Inc. (CA)
 Mr. & Mrs. James MacGregor (NY)
 Connie G. McArthur & Patricia A. Klinge (CO)
 Shames Makovsky Realty Co./ Mr. & Mrs. Evan Makovsky (CO)
 The Diane and Darryl Mallah Family Foundation (NY)
 Marotta Gund Budd & Dzera, LLC (NY)
 Edward N. & Margaret G. Marsh Foundation (NV)
 Mr. & Mrs. J. Landis Martin (CO)
 Arthur Mauldin (CO)
 Wilbur May Foundation (CA)
 Edith McAllister (TX)
 James E. Rogers & Anne L. McCracken Rogers (VA)
 Mr. & Mrs. Lee A. McIntire (CO)
 Louis R. & Dorothy M. Meister Foundation (CO)
 Merchant Factors (NY)
 Henry Mohr (CO)
 Nazeer & Joseph Moinian Foundation (NY)
 Morgan Stanley (CA)
 Morrison & Foerster, LLP (NY)
 Moskowitz Family Foundation (CO)
 Mr. & Mrs. Jerome L. Myers (MA)
 National Asthma Center Theater Group (NY)
 Joseph S. Nelson & Anne P. McDonald (CO)

Carol D. Nichols (FL)
 Nordstrom Park Meadows (CO)
 Oakwood Homes LLC (CO)
 The Nathan M. Ohrbach Foundation (CA)
 Olympus Insurance Company (FL)
 Pachulski Stang Ziehl & Young (CA)
 Prof. Yakup Paker (UK)
 Parish of Trinity Church (NY)
 Patel Foundation Inc. (NY)
 Paul, Weiss, Rifkin, Wharton & Garrison LLP (NY)
 Rabbi Mark A. Peilen (AL)
 Mr. & Mrs. Marcus B. Peperzak (CO)
 Mr. & Mrs. Jordan H. Perlmutter (CO)
 Oscar T. Peters (CA)
 Platform Specialty Products (CT)
 PNC Business Credit (CA)
 Margaret K. Porter (CO)
 Presbyterian Healthcare Services (NM)
 Phyllis Pullman (NY)
 Harry W. Rabb Foundation (CO)
 Racmar Foundation (TX)
 RAS Management Advisors, Inc. (AL)
 Ravinia Holdings LLC (CO)
 Martha Records & Richard Rainaldi (CO)
 Randy S. Reiff (NY)
 The Rifkin Foundation (CO)
 RK Foundation (DE)
 RK Mechanical, Inc. (CO)
 RLC Foundation (CO)
 Mr. & Mrs. Douglas S. Robinson (CO)
 Robinson Waters & O'Dorisio, PC (CO)
 Rocky Mountain Prestress (CO)
 Walter & Sandra Rosen Foundation (TX)
 Rosenthal & Rosenthal, Inc. (CA)
 Rosenthal & Rosenthal, Inc. (NY)
 The Rosenthal Foundation (TX)
 Roth Capital Partners (CA)
 Rouse Appraisals LLC (CA)
 Corinne B. Winston & Joseph B. Rubin (NJ)
 Nancy & Miles Rubin Foundation (DC)
 RubinBrown LLP (MO)
 Edward K. Sabourin (FL)
 Eleanor Sade (CA)
 Saint Joseph Hospital Foundation (CO)
 Saunders Construction, Inc. (CO)
 SBC Global (CA)
 Mr. & Mrs. Adam D. Schiller (TX)
 Michael J. Schimberg (UT)
 Mr. & Mrs. Richard T. Schlosberg (TX)
 Susan E. Juroe & Michael K. Schonbrun (CO)
 Bev & Donald L. Schrader (WY)
 Schulte Roth & Zabel, LLP (NY)
 SCL Health (CO)
 Mr. & Mrs. Mark E. Shure (IL)
 Jared A. Siegel (NY)
 SimplexGrinnell, LP (CO)
 SJP Properties (NJ)
 Skidmore Owings & Merrill LLP (NY)
 Skippy Frank Translational Medicine & Life Sciences Fund (NY)
 SM Energy Company (CO)
 Eric L. Smidt (CA)
 Smiley Wang-Ekval (CA)

Mr. & Mrs. David N. Sonnenblick/
Sonnenblick-Eichner Company (CA)
Sovereign Bank (NY)
The Spector Group (NY)
Square Mile Capital Management LLC (NY)
Victor P. Stabio (CO)
Ellen E. Stewart & Donald Vancil (CO)
Stonebridge Companies (CO)
Stradley, Ronon, Stevens & Young, LLP (PA)
Strata Resources Inc. (CO)
Barbara & Donald J. Sullivan (WY)
Suzanne Sullivan (NY)
Elisabeth W. Szegho (IL)
T-Mobile (CO)
Tetra Tech, Inc. (CA)
Teva Pharmaceuticals (MO)
TIAA-CREF (CO)
Tommy Hilfiger (NY)
Carl A. Toriello (NY)
Torys LLP (NY)
Mr. & Mrs. Michael Touff (CO)
Tower Services Inc. (NY)
Toyota Motor Sales USA, Inc. (CA)
Tri-State Construction Corp. (NY)
Turner Construction Company (NY)
Tuscarora Yarns, Inc. (NC)
Union Pacific Foundation (NE)
United Airlines (CO)
University of Denver (CO)
University Physicians, Inc. (CO)
US Engineering Company (CO)
Abby A. Van Pelt (PA)
Mr. & Mrs. Stephen E. Walker (TX)
Roberta Hope Waller (FL)
The Walton Family Foundation (AR)
Walton Street Capital, LLC (IL)
Webster Business Credit Corp. (CT)
Lenny Weinglass (CO)
W. Thomas Weir (TX)
The Weiser Philanthropic Fund (NY)
Welch Family Foundation (MO)
Wells Fargo Insurance Services USA,
Inc. (NC)
Wilk Auslander (NY)
Williams Family Foundation (CO)
Wilmer Cutler Pickering Hale and Dorr (CO)
David M. Wilson (MD)
Windels, Marx, Lane & Mittendorf, LLP (NY)
Winter Harbor LLC (CT)
Ann S. Wolff (IL)
Joy Wonsowicz (CA)
Xcel Energy (CO)
The Anne and Henry Zarrow Foundation (OK)
The Harold Zepelin Living Trust (MI)

\$1,000-\$4,999
Anonymous (AZ)
Anonymous (CO)
Anonymous (CO)
Anonymous (FL)
Anonymous (MA)
Anonymous (NY)
Anonymous (NC)
02 Partners (MA)

82nd Airborne Division Association, Inc. (CO)
Kay Anne Abbott (CO)
Mr. & Mrs. Jeremy Abelson (CO)
Craig L. Aberle (FL)
John N. Abrams (CO)
Accardo Engineering (NY)
Accual Associates, Inc. (WI)
Acklie Charitable Foundation/
Duane Acklie (NE)
The Ackman-Ziff Real Estate Group LLC (NY)
Actelion Pharmaceuticals, US, Inc. (CA)
Aetna (CO)
Allscripts (AZ)
Mr. & Mrs. Leland J. Alpert (CO)
American Industries Corp. of New York (NY)
Amp the Cause (CO)
Anadarko Petroleum Corporation (TX)
Robert D. Andring (MN)
Antex Knitting Mills (CA)
Eric Anton (NY)
Mr. & Mrs. Lawrence Appel (NY)
The Howard & Nikki Applebaum
Foundation (CA)
Archetype Consultants (NY)
Mr. & Mrs. John M. Area (TX)
Harold Arkava (CT)
Donald F. Seeger & Phyllis Arlow (NM)
Herbert L. Ash (NY)
ASP Global Services, Inc. (CA)
Aspen Fine Arts Company (CO)
Aspen Valley Hospital (CO)
Ellen M. Asplundh (PA)
Associated Textile Converters (NY)
Assured Environments (NY)
Lois R. Atkin (CA)
Mr. & Mrs. John J. Atwood (WA)
Auerbach Realty (CA)
Aveo Capital (CO)
AVI-SPL (CO)
Mr. & Mrs. Arthur Backal (NY)
BAH Consulting Corp (NY)
Jeffrey Bain (CO)
George A. Baker Jr. (NM)
Ed Balcerzak (CO)
Ellen L. Bale (KY)
Balmoral Funds (CA)
Mr. & Mrs. Ronald D. Balsler (GA)
Bank Leumi USA (CA)
The Bank of New York Mellon (NY)
Bank of Oklahoma - Wealth Management (OK)
Bank of the West (CA)
Mr. & Mrs. Elmer H. Barlock Jr. (CO)
Ben G. Barnett Foundation (TX)
Stephanie M. Barnhill (FL)
Ralph L. Barnum (FL)
Mr. & Mrs. Zvi Baron (CA)
Karen A. Barrett (TX)
Herbert Baskin (CA)
Bayer Corporation (PA)
BBVA Compass (CA)
Bee Darlin' Inc. (CA)
Julie & Anthony Behrstock (CA)
Joan C. Benjamin (CA)
Mr. & Mrs. David Berberian (TX)

James Berenbaum & Dr. Wendy
Berenbaum (CO)
Dr. & Mrs. Gerald S. Berenson (LA)
Mr. & Mrs. Ronald D. Berge (CO)
Mr. & Mrs. Wayne S. Berger (FL)
Mr. & Mrs. Saul G. Berkowitz (NJ)
Mr. & Mrs. Donald S. Berlin (MD)
Mr. & Mrs. William F. Berliner (FL)
Mr. & Mrs. Edwin J. Bernau Jr. (CO)
Richard I. Bernstein & Janice E. Abbott (NY)
Mr. & Mrs. Gary Bialis (CA)
Bibby Financial Services (IL)
Bill Miller Bar-B-Q Enterprises, Ltd. (TX)
Nancy & James Birdwell (CA)
Mr. & Mrs. Richard S. Birnbaum (NY)
Birnbaum Property Company (TX)
Susan J. Black (MI)
Ret. Col. Morton B. Blager &
Dr. Florence B. Blager (CO)
Mr. & Mrs. Michael J. Blank (AZ)
Mr. & Mrs. Lee N. Blatt (FL)
Blatteis Family Foundation (CA)
Blazer Electric Supply (CO)
David L. Bleich (NY)
Clayton Blinn (CO)
Marshall E. Bloom (GA)
Jerome Blumberg (NY)
Dr. S. Allan Bock (CO)
Robert J. Bodnar (CA)
Bolner's Fiesta Products, Inc. (TX)
Mr. & Mrs. Stuart B. Bombel (CO)
Robert Book (TX)
Boston Private Bank & Trust/
Philip Powers (CA)
Botway Family Foundation/Lloyd Botway (AZ)
Mr. & Mrs. C. Richard Bourret (CO)
Doris E. Bouwensch (MA)
Braconier Plumbing & Heating Co., Inc. (CO)
Barbara A. Braddick (NY)
Bradsby Group (CO)
Betty Brega (CO)
Mr. & Mrs. Charles F. Brega (CO)
Donald Breslow (CA)
Mr. & Mrs. Ron M. Brill (GA)
Michael H. Brodie (CA)
Ken & Jill Brodkowitz (MD)
Mr. & Mrs. Sheldon Bromberg (NM)
Richard K. Brooks (CA)
Robert Brooks (NY)
Brookside Painting Inc. (NY)
Brown Bottle Social (CA)
Chad Brownstein (CA)
Herbert Brownstein (OH)
Mr. & Mrs. Harry Brusenhan (TX)
Richard A. Bryant (CO)
BT Training LLC (NY)
Buchanan Ingersoll & Rooney PC (PA)
Ray Learsy & Melva Bucksbaum* (CO)
Curtis Burchard (TX)
Mark Burg & Shainaz Donnelly (CA)
Barry & Jayna Burgdorf (TX)
Erlene Burgin (FL)
Mr. & Mrs. Daniel Y. Butler (TX)
C-Uptown Realty Inc. (NY)

*Deceased

C3 Interiors LLC (CO)
 Lana Cain Krauter (TX)
 Katherine Camp (NY)
 Vera R. Campbell/Knitworks Design Zone/
 Vera R. Campbell Foundation (CA)
 Capital Business Credit, LLC (CA)
 Cappy's Inc. (TX)
 Carih Chapter (NY)
 Dr. Jerry Carle (FL)
 Carmichael International Services/
 Enrico Salvo (CA)
 Castaways Foundation (IL)
 Michael B. Cavanagh (TX)
 CBS Corporation (NY)
 CC Controlled Combustion Co., Inc. (NY)
 Mr. & Mrs. Antonio Celayeta (CO)
 Celltrust Corporation (AZ)
 Centennial Elevator Industries, Inc. (NY)
 Centurytel, Inc. (LA)
 Mr. & Mrs. Scott A. Chapman (CA)
 Ronald B. Charfoos (MI)
 Eileen Charif (FL)
 Gary D. Chazen (TN)
 Chicago League - Skokie Division (IL)
 Susan L. Ching (HI)
 The Chubb Corporation (NJ)
 Cigna Health and Life Insurance
 Company (PA)
 Citrin Cooperman & Company LLP (NY)
 CNM Foundation, Inc. (NM)
 Arnold L. Cohen (FL)
 Mr. & Mrs. Bernard Cohen (CA)
 Mr. & Mrs. Harry D. Cohen (NY)
 Howard Cohen/Waldman Bros, LLP (TX)
 Jacquelyn Cohen (CA)
 Mr. & Mrs. Michael S. Cohen (NY)
 Cohn Handler & Co. (CA)
 Mr. & Mrs. James J. Colbert (MA)
 Barbara K. Cole (NM)
 Clarence B. & Joan F. Coleman Charitable
 Foundation (CA)
 Lynn J. Collins (MI)
 Collins Foundation (NV)
 The Colonnade Outlets at Sawgrass Mills (FL)
 Colorado Preventive Medicine (CO)
 Comcast (CO)
 Comerica Bank (CA)
 Dr. Robert A. Comp & Diane P.
 Estes-Comp (AZ)
 Community First Foundation (CO)
 Concrete Frame Associates (CO)
 Mr. & Mrs. Thomas E. Congdon (CO)
 Consolidated Electrical Distributors (CO)
 Conway Mackenzie (CA)
 Dr. & Mrs. Robert A. Cooke (IL)
 Mr. & Mrs. J. Samuel Coolik (GA)
 Raymond P. Costello (CO)
 Covidien Employee Giving (MA)
 Steve & Amy Coyer (CO)
 Jay M. Coyle (NM)
 The CPI Group (CO)
 Crescent Electric Supply (IL)
 Mr. & Mrs. Steven B. Croman (NY)
 Crystal Comfort, Inc. (NY)



118
CITIES REPRESENTED
AMONG BOARD MEMBERS
AND TRUSTEES

Culbertson Company of NY (NY)
 Robert Cullen (FL)
 Mr. & Mrs. Barry Curtiss-Lusher (CO)
 Lee E. Custer (FL)
 Cutler Family Philanthropic Fund (PA)
 Cutler Minikes & Adelman LLP (NY)
 Alan P. Cutter (CA)
 Dagawa Trading LLC (CA)
 Mr. & Mrs. Andre Danesh (MA)
 Maurice A. Daniel (CA)
 Daniel A. Clark, PC (CO)
 Mr. & Mrs. Michael Davidoff (TX)
 Mr. & Mrs. Jay Davidson (CO)
 Jean F. Davis (NH)
 Joseph S. Davis (FL)
 Davis Partnership Architects, PC (CO)
 Terrence W. Dawson (UT)
 Daybreak Associates, LLC (CT)
 Mr. & Mrs. William N. Deatherage (NJ)
 Jordan Deifik (CO)
 Deloitte Corporate Finance LLC (CA)
 Mr. & Mrs. Joseph DeLuca (NY)
 Mr. & Mrs. David B. Dermer (GA)
 DH Capital, LLC (NY)
 Sue Diamond (FL)
 Mr. & Mrs. Brian Dickie (CO)
 Dietz & Watson Foundation (PA)
 Mr. & Mrs. Joseph A. DiGregorio (NM)
 Dillon Foundation (IL)
 Mr. & Mrs. Navin C. Dimond (CO)
 Mr. & Mrs. Stuart M. Director (OR)
 Divots Sportswear (GA)
 DLA Piper LLP US (MD)
 Mr. & Mrs. James Dobbins (CA)
 Marsha & Jesse Dompok (NM)
 Mr. & Mrs. Harlan B. Dopkin (CO)
 Mr. & Mrs. John E. Dreier (CO)
 Dreiling Pump & Supply, Inc. (CO)
 DTM Drafting & Consulting Service (NY)
 Duane Morris LLP (NY)
 Durkin Group & Associates, LLC (NJ)
 DV FT Holdings, LLC (FL)
 Early Bird Capital (NY)
 Eaton Corporation (OH)
 The Eberly Company (CA)
 A. & L. Edelman Family Foundation Inc. (NY)
 Dr. Ronald A. Eichel (GA)
 Dr. Abraham Eisenstark (MO)
 Michael Eisner (CA)

El Paso Glass (CO)
 Nicole Eldridge (NY)
 The Elno Family Foundation (MD)
 EMJ Apparel Group (CA)
 M.N. Emmerman & P.A. Stockhausen
 Foundation, Inc. (NY)
 Empire Office (NY)
 Encore Electric, Inc. (CO)
 Mr. & Mrs. Alfred B. Engelberg (FL)
 Alden Englander (NY)
 David H. Engleberg/Paragon Investment
 Properties, LLC (CO)
 Mr. & Mrs. Louis Eni (NJ)
 Environmental Landworks Company, Inc. (CO)
 P. Jody Epstein & Donald Yale (CO)
 ES Foods (NY)
 Sandra Eskenazi (CO)
 Paul R. Esserman (CO)
 Mr. & Mrs. Don Esstman (CO)
 Melvyn J.* & Suellen Estrin (DC)
 Euler Hermes (CA)
 Keith J. Evans (CO)
 Evolution Entertainment (CA)
 Evy of California, Inc. (CA)
 Executive Sounding Board Associates,
 Inc. (PA)
 Ezra Brutzkus Gubner LLP (CA)
 Mr. & Mrs. Andrew Fallek (NJ)
 Louis & Helen Fanaroff Foundation Ltd (MD)
 Brad Farber (CO)
 Mr. & Mrs. Steven W. Farber (CO)
 John C. Farnam & Paul R. Heitzenrater (CO)
 Fidelity Mortgage Lenders Inc./
 Charles Hershson (CA)
 Fieldland Investment Co. (DE)
 Gilbert & Anita Fields (NY)
 James G. Fifield (CO)
 Fifth Third Bank (NY)
 Mr. & Mrs. Jerry E. Finger (TX)
 Joseph M. Finley (MN)
 Fireman's Fund Insurance Company (CA)
 First Pacific Financial (CA)
 First Western Trust Bank (CO)
 Hope Fischer (NY)
 Sistie Fischer (CO)
 Fisher Scientific (PA)
 Roger W. Flartey (NJ)
 Mr. & Mrs. Aaron Fleck (CO)
 Steven J. Fleming (NJ)
 Four Seasons Hotel Denver (CO)
 Mr. & Mrs. Shawn P. Fowler (CO)
 Edgar D. Fox (CO)
 Mr. & Mrs. Bradley K. Frank (TX)
 Fred Smith Plumbing & Heating Co., Inc. (NY)
 Freedom News I Inc. (NY)
 Freedom New II Inc. (NY)
 Elijah Freeland (AZ)
 Jack & Pauline Freeman Foundation Inc. (MA)
 The Freeman-Harrison Family Foundation (NY)
 FRENCH Funerals - Cremations (NM)
 Friedel Family Foundation (AZ)
 Bernard Friedman (NY)
 Helen Friedman (NJ)
 Mr. & Mrs. Samuel J. Friedman (LA)

Mr. & Mrs. Albert M. Friedman (IL)
 Perry H. Friedrich & Patricia F. Mayer (CA)
 Mr. & Mrs. Sheldon Friedstein (CO)
 Zachary Fritz (CO)
 Mr. & Mrs. Peter Fritzing (CO)
 Frost National Bank (TX)
 Leo & Rhea Fay Fruhman Foundation (TX)
 Fugere Family Foundation (CO)
 Morris and Gertrude Furman Foundation (NY)
 Natalie Gabai (PA)
 Mr. & Mrs. Irving Gable (CA)
 Laurie Galbreath (CO)
 Andy Gans (NY)
 Garage Management Company (NY)
 Levi D. Garcia (NM)
 Mr. & Mrs. Douglas Gardner (CO)
 Mr. & Mrs. Robert T. Gates (CO)
 The GE Foundation (CT)
 Mr. & Mrs. Lawrence P. Gelfond (CO)
 Michael Geller (CO)
 Gelt Ventures, LLC (CA)
 Lyne Taylor Genser (MD)
 Mr. & Mrs. Brad P. Gerla (CT)
 Gersowitz, Libo & Korek, P.C. (NY)
 GFI Development Company, LLC (NY)
 Mr. & Mrs. Dennis Gilbert (NY)
 Henry W. Gilbert (CO)
 Mr. & Mrs. Laurence Gilbert/
 Gilbert Family Fund (NY)
 Gilbert Foundation (IL)
 Honorable & Mrs. Joseph B. Gildenhorn (DC)
 Gilead Sciences, Inc. (CO)
 Julia A. Giles (CO)
 Brian Ginsberg (NY)
 Ruth and Jack Glantz Family Foundation
 Inc. (CT)
 GlassRatner Advisory & Capital Group
 LLC (GA)
 Mr. & Mrs. Chad Glauser (CO)
 Mr. & Mrs. Jerry Glauser (CO)
 Glickfield Family Foundation (FL)
 Global Communications Group, Inc. (CO)
 Thomas Goff (CA)
 Gold Family LLC (CO)
 Gene Rosalie & Susan Goldberg Fund/
 Combined Jewish Philanthropies (MA)
 Goldman Sachs & Co. (NY)
 Goldman Sachs Commercial Mortgage
 Capital (TX)
 Goldman, Sachs & Co. Matching Gift
 Program (NJ)
 Michael B. Goldstein (FL)
 Robert Goldstein (NY)
 Mr. & Mrs. Robert D. Goodman (NY)
 Goodman-Gable-Gould Co. Adjusters
 International (MD)
 Martin Goodstein (NY)
 Mr. & Mrs. Richard C. Goodwin (CO)
 Wendy & Sol Gordon (MD)
 Gotham Construction Co., LLC (NY)
 The Gould-Shenfeld Family Foundation (NY)
 Mr. & Mrs. Larry R. Grace (CO)
 Eugene and Emily Grant Family
 Foundation (NY)

Grant Thornton LLP (NY)
 Greehey Family Foundation (TX)
 Mr. & Mrs. Ronald Greenberg (CO)
 Gregory's Fine Jewelry (FL)
 David E. Griffith (CA)
 Grossberg Company, LLP (MD)
 Dr. Joseph H. Groveman (FL)
 Mr. & Mrs. Thomas S. Guggenheim (OH)
 Mr. & Mrs. Robert E. Gurwitz (TX)
 The Robert G. & Ellen S. Gutenstein Family
 Foundation Inc. (NJ)
 Prof. Nancy J. Reichman &
 Charles R. Gwirtsman (CO)
 James K. Gyurman (CO)
 H & S, Inc. (NM)
 Mr. & Mrs. Bruce S. Haas (FL)
 Hackman Capital Partners (CA)
 Alex & Sally Halff Family Foundation (TX)
 Mr. & Mrs. Maurice Haroche (NY)
 Halston Heritage (CA)
 Michael Hamburg (CA)
 Mr. & Mrs. William T. Hammond (CA)
 Harmony Fund Inc. (NJ)
 Deborah Harper (OK)
 Mr. & Mrs. J. Ira Harris (FL)
 Barry L. Hartglass (NY)
 The Honorable Harris L. Hartz (NM)
 Mr. & Mrs. William L. Hawkins (PA)
 Mr. & Mrs. Robert W. Hayden (FL)
 Mr. & Mrs. Gregg S. Hayutin (CO)
 Mr. & Mrs. Kevin Heaney (CA)

Mr. & Mrs. Joel Hirschtritt/Hirschtritt Family
 Foundation (NY)
 Hitex Dyeing & Finishing, Inc. (CA)
 Mr. & Mrs. George C. Hixon (TX)
 Teresa Hixson (PA)
 Bette J. Hobbs (CA)
 Mr. & Mrs. Frank D. Hobbs/The Inspiration
 Fund at the San Diego Foundation (CA)
 Mr. & Mrs. Steven Hochberg (VA)
 Mr. & Mrs. Jere I. Hochman (NY)
 Jules B. Hochman (CO)
 Mr. & Mrs. Robert B. Hoffman, MD (NC)
 Mark Holbreich, MD (IN)
 Holt Construction (NY)
 Mr. & Mrs. Henry M. Holzer (CO)
 Eric J. Hoover & Deborah Gaynor (NM)
 Gary & Leslie Howard Family Foundation (CO)
 Howard Halpern & Associates, LLC (GA)
 David K. Hsieh (NY)
 Hudson Pacific Properties, Inc. (CA)
 Julia B. Hunkins (NM)
 Hurst Family Foundation (CO)
 Aaron Hyatt (CO)
 Hyatt Regency Denver at Colorado
 Convention Center (CO)
 Sherrill Ice (CO)
 Imagine Infill LLC/Jonathan Alpert (CO)
 Independent Charities of America Local
 Industry Charitable District (CA)
 International Business Machines
 Corporation (NY)
 Investors Bank (NJ)
 Israel Discount Bank (CA)
 Charles B. Israel Foundation (CO)
 Isseks Brothers, Inc. (NY)
 Mr. & Mrs. Allan S. Ivascu (FL)
 Stew Jackson Foundation/
 Stewart Jackson (CO)
 Mr. & Mrs. Alan L. Jacobs (NY)
 Mr. & Mrs. Norman K. Jacobson (FL)
 JAD Corporation of America (NY)
 Steve D. Jaffe (CA)
 Jam'n Products (CA)
 James Perse, Inc. (CA)
 JC & Associates (CA)
 JD Fine & Company (CA)
 John Paul Richard, Inc. (CA)
 Mr. & Mrs. K. T. Johnson Jr. (WA)
 William C. Johnson (IL)
 Noomis Jones III (CO)
 Mr. & Mrs. Herbert Josephs (MI)
 Journeymen Plumbers & Gasfitters Local
 Union 3 (CO)
 Julian Gold (TX)
 The Sidney & Pearl Kalikow Foundation (NY)
 Dr. & Mrs. Harold Kallman (FL)
 Elizabeth Kalodner (NY)
 Kane & Associates Chartered (MD)
 Karen Kane Co. (CA)
 Dr. & Mrs. Harvey B. Karsh (CO)
 Philip H. Karsh & Linda Love (CO)
 Naomi Z. Katcher (NY)
 Brandy Katz (NY)
 Kaufman Foundation (MI)



**NATIONAL JEWISH HEALTH
 BOARD MEMBERS
 AND TRUSTEES**

Heartland Financial USA Inc. (IA)
 Mr. & Mrs. Bertram Heil (NM)
 Joseph R. Heller (AZ)
 Mr. & Mrs. Norman B. Heller (NY)
 Jeff Henick (NY)
 Heritage Hotels & Resorts, Inc. (NM)
 Heritage Investors Management Corp. (MD)
 Jack Hersh (CA)
 Hertz, Herson & Company, LLP (NY)
 Mr. & Mrs. Martin H. Herzog (CO)
 Minna W. Hewes (CO)
 Robert W. Hicks (CA)
 Lorraine & Harley Higbie Fund (CO)
 Highline Wealth Management (MD)
 Mr. & Mrs. David A. Hilliard (CA)
 Natalie Hills-Boggs (CA)
 Hines Interests LP (TX)
 Harriette E. Hirsch (CA)

Mr. & Mrs. Steven M. Kaufmann (DC)
 Mr. & Mrs. Thomas F. Keleher (NM)
 Keleher & McLeod (NM)
 Rollie R. Kelley Family Foundation (CO)
 Keltic Financial Services, LLC (NY)
 Marvin A. Kempner (FL)
 Kenilworth Equities Ltd. (NY)
 Kenwood Real Estate Services LLC (NY)
 Thomas J. & Mary J. Kershnik (WY)
 Lawrence Kestin (NY)
 Norman Ko & Joseph Foster/KF Professional Group (CA)
 William E. King (MI)
 Roger White & Ann M. King-White (CO)
 The Kirschner Trusts (OK)
 Kirschner-Bookatz Family Foundation (TX)
 Leslie S. Kite (CA)
 Klee, Tuchin, Bogdanoff & Stern LLP (CA)
 Martin Kleinbart (FL)
 Kleinfeld Bridal Corp. (NY)
 Mr. & Mrs. Robert L. Koenig (MD)
 Avrom Kopelman (CT)
 Mr. & Mrs. Peter J. Korneffel (CO)
 Korovilas (CA)
 Robert Kossman (CO)
 Linda Kozak (IL)
 KPMG LLP (TX)
 Evalyn A. Kragh (CA)
 The Krasberg-Mason Foundation (IL)
 Abraham Krasne Foundation/
 Krasdale Foods (NY)
 Rhoda Krasner (CO)
 Rae M. Krelitz (NY)
 Chris D. Kuper (CO)
 Mr. & Mrs. David S. Kupetz (CA)
 Melvin Kupperman (IL)
 Lloyd S. Kurtz (AK)
 Alan M. & Karen Kurzman (TX)
 L.A. Fabric Imports, Inc. (CA)
 LA-CO Industries, Inc./Markal (IL)
 Mr. & Mrs. Brian D. Ladin (TX)
 Clarence V. Laguardia Foundation (CO)
 Dr. Kane S. Lai (CO)
 Cecelia Lance (VT)
 Mary B. Langenberg (MO)
 Mr. & Mrs. Allen Lapporte (IL)
 Mr. Seymour Lapporte (CA)
 Michael Lau (CO)
 Victor C. Laughlin, M.D. Memorial Foundation Trust (OH)
 Mr. & Mrs. Jerrold L. Lavine (RI)
 Hervey R. Lavoie (CO)
 Jon Leasia (CO)
 Lore F. Leder Foundation Trust (VT)
 Charlotte Lee (NY)
 Dr. & Mrs. Jeffrey G. Leflein (MI)
 Mr. & Mrs. Stephen Legum (GA)
 Lamar Leland (CA)
 E. Joyce Lemberger (NV)
 David G. LeMire (TX)
 Mr. & Mrs. George N. Lenyo (MI)
 Earlene Leonard (FL)
 Susan H. Lerner (CA)
 Warren Lesser (NY)

Robert L. & Helen E. Levenson Family Charitable Trust (WV)
 Leventhal Brown & Puga, PC (CO)
 Mr. & Mrs. Andrew S. Levine (NY)
 Mr. & Mrs. Gary D. Levine (CO)
 Mr. & Mrs. Larry Lewis (NE)
 Ada Lieb Goldstein Foundation (NY)
 Mr. & Mrs. Bernard Liebman (FL)
 Dr. & Mrs. William M. Lieppe (GA)
 The Lighting Agency, Inc. (CO)
 Glenn L. Link (CO)
 George Lipton (GA)
 Mr. & Mrs. Matt Livingston (CO)
 Josh Lobel (CA)
 Stacey & Keith M. Locker (NY)
 Barbara Losi (CA)
 Mr. & Mrs. D. Craig Loucks (CO)
 Mr. & Mrs. Monty Loud (CO)
 Abby C. Lucero (CO)
 Lucky Strike (CA)
 Elaine L. Lueck (WA)
 Irene Luria (FL)
 Mr. & Mrs. Geoffrey D. Lurie (NY)
 Luxury Attache (NY)
 M & M Plumbing & Heating, Inc. (NY)
 Mr. & Mrs. Paul L. MacCaskill (CO)

Mr. & Mrs. Anthony Mazza (CO)
 McGowan Builders, Inc. (NJ)
 Roberta McCain (DC)
 McClure Hill (CO)
 Mr. & Mrs. Hunter McConnell Jr. (CA)
 Ann McCullough (CO)
 Chuck McDaniell (CO)
 Mr. & Mrs. Michael R. McDonald (CO)
 Joseph O. McDowell Charitable Remainder Annuity Trust (CO)
 McGladrey & Pullen LLP (NY)
 Irma McGovney Family Foundation (FL)
 Mr. & Mrs. James R. McManus (FL)
 McMillan LLP (QC)
 Methodist Hospital of Southern California (CA)
 Metropolitan National Bank (NY)
 Janet M. Meuleman (LA)
 Jill B. Meyer (CO)
 Mr. & Mrs. David Meyerson (CA)
 MHP Real Estate Services (NY)
 Mias Fashion Manufacturing (CA)
 Emanuel N. Micallef Foundation (NY)
 Mr. & Mrs. Sam Michaels (FL)
 David M. Reza/Milberg Factors, Inc. (CA)
 Elizabeth P. Miller (NY)
 Mr. & Mrs. Myron M. Miller (CO)
 Linda E. Miller-Ciriachi (OH)
 Steven Milo (CO)
 Milo Kleinberg Design Associates (NY)
 MINDset direct (VA)
 Dr. & Mrs. Michael J. Mirsky (FL)
 Ronnie Mitzner (CO)
 Gaynelle C. Mize (CO)
 Modrall, Sperling, Roehl, Harris & Sisk, PA (NM)
 Mr. & Mrs. Shawn Moffatt (CO)
 Dr. & Mrs. Charles W. Mohler (WY)
 Molzen-Corbin & Associates (NM)
 Montage Hotel - Beverly Hills (CA)
 Mr. & Mrs. Richard Moorman (TX)
 Mary D. Morgan (VA)
 Morgan Douglas Mutch & Associates, Inc. (CO)
 Morgan Stanley (MA)
 Richard J. Morroni (CO)
 Morse Family Foundation (CO)
 Mortenson Construction (CO)
 Barry G. Moss (NJ)
 Mountain Chalet - Aspen (CO)
 MTech Mechanical Technologies (CO)
 Mulligan Security Corp (NY)
 Diana B. Munder (NY)
 Amy M. Murnick & Mark McKeag (MA)
 Lee S. Murnick (NY)
 Murnick Property Group (NJ)
 Murray Fischer/Murray Fischer Law Offices (CA)
 Linda J. Myrick (FL)
 Rufus H. Nagel (CO)
 Dr. Nadine Nakazono (CO)
 Muriel H. Nathan (GA)
 National Mah Jongg League, Inc. (NY)
 Neiman Marcus (FL)
 David J. Neithercut (IL)

2,715
 COMBINED YEARS OF
 SERVICE AMONG OUR
 TRUSTEES

Dr. & Mrs. Robert P. Mack (CO)
 Rob McCoy Jr. (CO)
 Mr. & Mrs. Ward Mahanke (CO)
 Mr. & Mrs. Phillip N. Maisano (NJ)
 Mr. & Mrs. Gary Q. Mandel (CA)
 Dr. & Mrs. Charles Mandell (FL)
 Mandell Cardiac Care Center PA (FL)
 Manufacturers Bank (CA)
 Marin Management Corp. (NY)
 Mr. & Mrs. Jerrold H. Marks (CA)
 Amelia and Julius Marks Charitable Foundation (OH)
 Philippa C. Marrack, PhD (CO)
 Jerry Martin (NY)
 Dr. & Mrs. Richard J. Martin (CO)
 Mr. & Mrs. Richard A. Massman (TX)
 Marjorie Y. Matney (NC)
 Mark E. Mauldin (CO)
 Rhonda L. May (CO)
 Robert M. Mayer (NJ)
 Steven & Laura Mayer Family Foundation (CA)
 Mays Family Foundation (TX)

Mr. & Mrs. Stephen H. Nelsen (NE)
 Eugene Nelson Charitable Trust (CO)
 Allan Neustadt Charitable Trust (TX)
 New Fashion Products, Inc. (CA)
 John E. Newman Jr. (TX)
 John T. & Mary C. Newman (KS)
 NexGen Resources Corp. (CO)
 Next Level Apparel (CA)
 Mr. & Mrs. Rodney A. Nielsen (CO)
 Noble Energy, Inc. (NJ)
 North Mill Capital LLC (NJ)
 Mr. & Mrs. Daniel H. Norwitz (MD)
 John W. O'Dorisio Jr. (CO)
 O'Melveny & Myers LLP (CA)
 Susan & Alex Obbard (UT)
 Omni Management Group (MN)
 Jesse H. & Susan Oppenheimer
 Foundation (TX)
 Lenore J. Orange (NY)
 Mr. & Mrs. David L. Orenstein (NY)
 Oskar Blues Brewery (CO)
 Pacifica Group Inc. (CO)
 Pall Corporation (NY)
 Mr. & Mrs. Robert Paller (GA)
 John Paoletta (NY)
 Paradigm Capital Corporation (NY)
 Park & Lim (CA)
 Mr. & Mrs. Robert F. Parker (FL)
 Mr. & Mrs. Brian Parks (CO)
 Mr. & Mrs. Joanna V. Parsons (NM)
 Partnersfinancial Charitable Foundation (TX)
 Murray Pasternack (CA)
 Mr. & Mrs. Franklin Paulson (MD)
 Payday, Inc. (NM)
 PC Mall (CA)
 Pearlstone Family Fund, Inc. (MD)
 Sarah A. Peay (CO)
 Pebb Enterprises (FL)
 Mr. & Mrs. Elan Penn (CO)
 Norman Perlmutter (IL)
 Alfred Perlstein (FL)
 Mr. & Mrs. Brett M. Perry (CO)
 Janet E. Peters (IL)
 Mr. & Mrs. Felix Petrillo (NY)
 Phil Long Dealerships (CO)
 The Eleanor Blackford Colvin Fund of the
 Pikes Peak Community Foundation (CO)
 Pincus Paul Restricted Fund (VA)
 Kate K. Piper (MN)
 Piper Jaffray & Co. (CA)
 Patricia A. Pirch (CO)
 Carole Pittelman (NY)
 Platzer, Swergold, Karlin, Levine, Goldberg,
 Jaslow LLP (NY)
 David Pollak (NY)
 Mr. & Mrs. Michael Pollak (CO)
 Robert G. Pollock (TX)
 Mickey Pomeranz* (CO)
 Mr. & Mrs. Laszlo Pook (CO)
 Mr. & Mrs. William T. Poole Jr. (KY)
 Ron & Mary Pott Family Foundation (CO)
 Press Family Foundation (MA)
 Timothy R. Prout (CO)
 The Prudential Foundation Matching Gifts (NJ)

Quality Building Services Corp. (NY)
 Quivey-Bay State Foundation (NE)
 Mr. & Mrs. Andrew J. Raabe (CO)
 Lawrence Raiman (NJ)
 Mr. & Mrs. William K. Randall (OR)
 Marcella C. Rapp (CO)
 Dennis Ratner (NY)
 Ratner Family Foundation (VA)
 Ray's Restaurants (GA)
 RD Management LLC (NY)
 Charles L. Read Foundation (NJ)
 Realty Advisory Board on Labor Relations,
 Inc. (NY)
 John Reilly & Carmelo Paglialunga (CO)
 Richard and Marianne Reinisch
 Foundation (IL)
 Karl Reinitz (MD)
 Larry J. Reisig (CO)
 Julie F. Rennett (OR)
 Republic National Distributing Co. (TX)
 Rexel Holdings USA (TX)
 Diane Reynolds/Edith Goss Campbell
 Trust (AZ)
 Rialto Capital Advisors, LLC (FL)
 Mr. & Mrs. Daniel A. Rich (CO)
 Mr. & Mrs. Jeffrey N. Rich (NY)
 Mr. & Mrs. Mark J. Richards (CO)
 Richardson Kontogouris Emerson, LLP (CA)
 The William L. Richter Family Foundation (CT)
 Miriam Rieder (FL)
 The Riklin Charitable Trust (TX)
 Heidi Risk (CA)
 Daniel L. Ritchie (CO)
 Margaret Rivers Fund (MN)
 RJM Construction (CO)
 The RMH Group, Inc. (CO)
 Mr. & Mrs. Norwood Robb (CO)
 Robert B. Samuels Inc. (NY)
 Roberts & Holland, LLP (NY)
 Roberts, Levin, Rosenberg PC (CO)
 Mr. & Mrs. Andrew S. Robins (FL)
 Melvin L. Robins (NM)
 Henry R. Robinson (CO)
 Clyde A. Rodbell (GA)
 Roclord Studio (CA)
 Rodey Law Firm (NM)
 Mr. & Mrs. James C. Roe (TX)
 Jennifer C. Rohan (CO)
 Mr. & Mrs. Harry W. Rosen (VA)
 Dr. & Mrs. Matthew D. Rosenbaum (CO)
 Mr. & Mrs. Marvin Rosenberg (OH)
 Rosenberg & Estis, P.C. (NY)
 Babs Rosenkranz (FL)
 Rosenson Family Foundation (IL)
 Michael Rosenthal (CA)
 Mr. & Mrs. Robert Rosenthal (CO)
 Ruth D. Rosin (IL)
 David N. Rosner Charitable Foundation,
 Inc. (FL)
 Bradley Ross (CA)
 Billie Ross (IL)
 Roth Foundation (FL)
 Mr. & Mrs. Edwin Rothberg (GA)

Marcia & Philip Rothblum Foundation,
 Inc. (NY)
 Paley Rothman (MD)
 Rouse Properties (NY)
 Irene Rubenstein (FL)
 Steven & JoAnn Ruppert (NM)
 Mr. & Mrs. M. Ronald Ruskin (NY)
 The Goldie Rutenberg & Parents Shaina,
 Riva & Juda Rutenberg & Rutenberg
 Family Foundation Inc. (NJ)
 R. W. Specialties, Inc. (CO)
 David S. Sabih & Anna Swartley (CA)
 Mr. & Mrs. John T. Sacha (CO)
 Nancy & Thomas Sadowski (CO)
 Catherine & Francois Safieddine (CO)
 Saks Fifth Avenue (FL)
 Mr. & Mrs. John P. Salazar (NM)
 Salmon Creek American Legion Auxiliary (WA)
 Jack Saltz (NY)
 Geri Bader Saltzman & Meyer M.
 Saltzman (CO)
 Mr. & Mrs. David A. Salverson (KS)
 Henry Salzhauser (NY)
 John & Barbara Samuelson Foundation,
 Inc. (NY)
 The Sanctuary (CO)
 Mr. & Mrs. Kenneth A. Sanders (AZ)
 Sandy Spring Trust (MD)
 Santos Postal & Company, P.C. (MD)
 Mr. & Mrs. Glen Sapa (IL)
 Mr. & Mrs. Richard M. Sapkin (CO)
 Helen & Harry Saul Foundation, Inc. (GA)
 David J. Savage (CO)
 Savanna Investment Management, LLC (NY)
 Mr. & Mrs. David B. Savitz (CO)
 Peggy Scharlin & Shlomo Ben-Hamoo (CO)
 Janet L. Schaumburg (TX)
 David Schechtman (NY)
 Schindler Elevator Corporation (NY)
 Mr. & Mrs. Walter Schlessel (FL)
 Schlessman Family Foundation (CO)
 Mr. & Mrs. Russell E. Schlittenhart (AZ)
 Dr. Mervyn Livingston Schloss Fund (NY)
 Gerard Schmit (CO)
 Schochor, Federico and Staton, P.A. (MD)
 Schrimmer Design Group, LLC (NY)
 Mr. & Mrs. David Schustack (NY)
 Dr. Helmut Schwab (WI)
 Leonard Schwartz (MI)
 Schwarz Foundation (NJ)
 Betty & Rick S. Schwettmann (CO)
 Jay Seeman (NY)
 Sharon A. Seeman (CO)
 Frank A. Segall (MA)
 Mrs. Quinta M. Seida & Dr. David Seida (VA)
 Stanley Seiken (MD)
 Jay W. Seligman (NY)
 Sherri Sender (AZ)
 Sewald Hanfling Public Affairs (CO)
 Ruth Shapiro (MA)
 Rajeev Sharma (OH)
 Mr. & Mrs. Norton Sharpe (CA)
 Mr. & Mrs. Mark Shavlik (MN)

Mr. & Mrs. Robert Sheldon (CT)
 Sheppard Mullin Richter & Hampton LLP (CA)
 Mr. & Mrs. Jeff Shigeno (CO)
 Mr. & Mrs. Mark Shinderman, Esq. (CA)
 Louis H. Shornick (MS)
 Daniel L. Shrader (NE)
 Shragatex (CA)
 Mr. & Mrs. Steve Shraiberg (CO)
 Mr. & Mrs. Jay Shulman (NV)
 Mr. & Mrs. Curtis L. Shupe (CO)
 Mr. & Mrs. Bertram N. Shure (CA)
 Henry Shyer (NY)
 Mr. & Mrs. Mark Sidell (CO)
 Muriel F. Siebert Foundation (NY)
 Evelyn L. Siegel (CO) (TX)
 Dr. & Mrs. Gary L. Siegel (CO)
 Harriet S. Siegel (IL)
 Mr. & Mrs. Jay A. Siegel (NJ)
 Lila Siegel (FL)
 Siemens Caring Hands Foundation (FL)
 Signature Bank (NY)
 Bernard Silver (CA)
 Silver Eagle Distributors Charitable Fund (TX)
 Mr. & Mrs. Barry R. Silverman (CA)
 Nicholas R. Silvers (NY)
 Larry & Anna Simon (CT)
 Mr. & Mrs. Lawrence Simon (KY)
 Dr. Morton Lewis Singer, Judith Singer &
 Irving Lapidus Foundation (FL)
 Singer Family Foundation Inc. (CO)
 Sanford Sirulnick (NY)
 T.J. Sivley & Mary Ray Sivley Perpetual
 Endowment Fund (NM)
 Mr. & Mrs. Richard Skor (FL)
 Skyline Management Solutions LLC (NY)
 Douglas C. Smathers (NM)
 Renata & John E. Smathers (CO)
 James R. Smith (CO)
 Mr. & Mrs. William Smithburg (CO)
 Stephen & Florence Soble (FL)
 Mr. & Mrs. Stephen M. Soled (NY)
 Richard Solway (NY)
 Sybil & Arthur Sonnenblick (FL)
 South Texas Money Management (TX)
 Southern California Council National Jewish
 Center (CA)
 Southern Wine & Spirits of New Mexico (NM)
 Mr. & Mrs. Donald H. Spencer (CA)
 Mr. & Mrs. John G. Spiegleman (CO)
 William Spitz (NY)
 Spring 11, LLC (NY)
 Jeffrey Springer (CO)
 Stanley Black & Decker (RI)
 Zerla M. Stayman (OH)
 Gerald Steiglitz (FL)
 Dr. & Mrs. Edward S. Stein (MO)
 Dr. & Mrs. Mark R. Stein (FL)
 Mr. & Mrs. Harold Stein (WI)
 Samuel R. Stein (CO)
 Debbie & Stu Steinberg (CA)
 Harvey Steinberg (CO)
 Steinberg Sports & Entertainment (CA)
 Mr. & Mrs. Jeffrey B. Steiner (NY)
 Rita C. Steinhauer (CO)

Sandy L. Stern (NY)
 Sheila & Simon Stern (FL)
 Howard O. Wilson/Sidney Stern Memorial
 Fund (CA)
 Sternburg Communications, Inc. (CO)
 Mr. & Mrs. Andrew Stillman (NY)
 Brandon R. Stokley (CO)
 Stony Apparel Corp. (CA)
 Donald R. & Mary G. Street (AL)
 Jacqueline & Matthew Stroyman (NY)
 Structural Consultants, Inc. (CO)
 Structure Tone Inc. (NY)
 Myron M. Studner Foundation, Inc. (NY)
 Suburban Maryland Chapter (MD)
 James M. Sullivan (CO)
 SulmeyerKupetz (CA)
 Summit Investment Management, LLC (CA)
 Sunshine Chapter (FL)
 Jacob Swiller (CA)
 Lisa Tadiri & J.M. Wands (CO)
 Tampa-Orlando-Pinellas Jewish Foundation,
 Inc. (FL)
 Tannenbaum, Helpern, Syracuse &
 Hirschtritt, LLP (NY)
 Charles and Lenke N. Tarr Fund (NV)
 Shirley T. Tartak (CA)
 Mr. & Mrs. Charles M. Tatham (CA)
 Taussig Family Foundation (CO)
 Carlyn Taylor (CO)
 Joe R. Taylor (WY)
 Mr. & Mrs. Michael Taylor (CO)
 Mr. & Mrs. Daniel Tenn (AZ)
 Mr. & Mrs. Harold A. Thau (CO)
 Mr. & Mrs. Jack L. Thompson (CO)
 Tokidoki, LLC (CA)
 The Robert and Jane Toll Foundation (PA)
 Willard K. Tom & Natalie Lichtenstein (DC)
 Top's Handbags (CA)
 TownePlace Suites Broomfield (CO)
 Townhouse Management Company (NY)
 TPG Specialty Lending (NY)
 Caryl C. Trachte (PA)
 Triumph Savings Bank (TX)
 Dr. Barbara R. Troetel & Dr. William M.
 Troetel (NY)
 Mr. & Mrs. James M. Trotter (CO)
 Troy Gould Attorneys (CA)
 Luc Trudel (CO)
 Barbara A. Trummer (WI)
 Sandra L. Tucker (MI)
 Turnbull & Co. (FL)
 P. Douglas Tuttle (TX)
 Patricia R. Tyler (CO)
 UBS (CT)
 UBS Employee Giving Program (MA)
 UBS Financial Services Inc. (NJ)
 United Therapeutics Corporation (MD)
 University Management Associates &
 Consultant Corp. (NY)
 UNM Foundation (NM)
 Nancy J. Uppal (MI)
 URS Capital (NY)
 US Bank (MN)
 US Bank National Association (MN)

US Security Systems (NY)
 Valley National Bank (NJ)
 Van Deusen & Associates (NJ)
 Jamie Van Leeuwen, PhD (CO)
 Jeffrey P. Vantosh (GA)
 Irma & Walter Vasen Foundation (CO)
 Venable LLP (CA)
 Janet & Thomas Verdiglione (FL)
 Mr. & Mrs. Michael Vermut (NJ)
 Mr. & Mrs. Robert S. Vermut (MD)
 Victory Park Capital Advisors (IL)
 Barbara J. Vincent (SC)
 Vision Service Plan (CA)
 VolumeCocomo Apparel, Inc. (CA)
 Wager Contracting Co, Inc. (NY)
 Jerome M. Waler (CO)
 John P. Wanderer (NV)
 Ambassador Marilyn Ware (CO)
 Wasserman Law Group (CA)
 Water Technology Group (CO)
 Mr. & Mrs. James B. Waterfield (TX)
 WB Engineers+Consultants (NY)
 Christopher T. Webb (CO)
 Webster Bank, NA (CT)
 Joan N. Weil (TX)
 Reed Weily (CO)
 Weinstein Family Charitable Trust (CO)
 Doris Weintraub (NY)
 Weisman Family Foundation (IL)
 Andrew M. Weiss (CO)
 Leonard R. Weiss (NY)
 Marcia S. Weiss (IL)
 Mr. & Mrs. Charles M. Wender (TX)
 Richard L. & Lois S. Werner Family
 Foundation (FL)
 Sidelle Wertheimer (MD)
 Wertheimer Family Foundation (MD)
 Sandra Wessman/Wessman Holdings
 LLC (CA)
 Westwood One (CA)
 Whitacre Family Foundation (TX)
 Mr. & Mrs. James D. White (CO)
 Deborah A. Whitehill (TX)
 Mr. & Mrs. Nicholas Wilder (CO)
 Mr. & Mrs. Erwin H. Will Jr. (VA)
 Harriette Will (VA)
 Albert G. Winchester (CO)
 Mr. & Mrs. Arnold Winick (PA)
 Winning Spirit, LLC (CO)
 Drs. Peter & Kathie Winograd (NM)
 Winthrop Couchot PC (CA)
 Mr. & Mrs. Edward O. Wolcott (FL)
 Mr. & Mrs. James B. Wolf (CO)
 Mr. & Mrs. Marvin E. Wolf (CO)
 Mr. & Mrs. William Wolfe (DC)
 Wollowick Family Foundation (FL)
 Isadore & Patricia Wollowick Family
 Foundation, Inc. (FL)
 Stephen M. Wolpert (NJ)
 Dr. & Mrs. Dale A. Wood (TX)
 Woodson Family Foundation (WY)
 Mr. & Mrs. Vince Yegge (NM)
 Mr. & Mrs. Gerald A. Yellin (NY)
 Yellowstone Hardware & Supply Corp. (NY)

YMI Jeanswear (CA)
Pat & Chuck Young (GA)
Z Capital Partners LLC (IL)
Z Gallerie, Inc. (CA)
Paul J. Zaffaroni (CA)
Samuel Zaitz (CO)
The Jay and Diane Zidell Charitable
Foundation (OR)
Shirley Ziegler (OH)
Mr. & Mrs. Edward Zinbarg (NJ)
Mr. & Mrs. Robert L. Zinn (TX)
Kim H. Zinszer (KS)
Lois S. Zoller (IL)
Arthur Zuch (NY)
Mr. & Mrs. Mortimer B. Zuckerman (MA)
Zwicker Electric Co., Inc. (NY)
Zyloware Eyewear (NY)

\$500-\$999

5280 Magazine (CO)
Lane Abbott (CO)
Mr. & Mrs. Ronald Abbott (VA)
Dr. & Mrs. Donald S. Abelson (CA)
The Abernathy MacGregor Group (NY)
Abrams Foundation (NJ)
Dr. Gertrude W. Abramson (FL)
The ACE Group (CA)
Adam Leitman Bailey, PC (NY)
Adli Law Group, PC (CA)
Advanced Laser and Skin Care (CO)
Rosalia Agresti (NY)
Mary Albright (NJ)
Alison Brod Public Relations (NY)
Garold D. Allen Jr. (KS)
Laura & Harvey Alpert Charitable
Foundation (CA)
Michael R. Altenberg (CO)
The Altieri Group at Morgan Stanley (FL)
The Edith & David Altman Foundation/
Dr. & Mrs. Altman (CO)
Andrisen Morton Company (CO)
Annie Corporation/Mr. & Mrs. Edward J.
Barbieri (MI)
Samuel Appel (AZ)
Argon, Inc. (CA)
Kerry Arquette (CO)
Mr. & Mrs. Ronald Ashpes (CA)
AT&T Wireless (FL)
Atalanta Corporation (NJ)
The Atlantic Group FPPM, Inc. (NY)
Raymond C. Aurand (MI)
Teresa Austin (NY)
Donald E. Avery (CT)
Avila Retail (NM)
Honorable & Mrs. Ted Baca (NM)
John A.* & Hilde Bacharach (MN)
Bank of Oklahoma NA (OK)
Barbara Fields Buying Office (CA)
Mr. & Mrs. Christopher R. Barber (MI)
Mr. & Mrs. John W. Barrett (SC)
Mr. & Mrs. Scott Bozoian (MO)
Bel-Aqua Pool Supply, Inc. (NY)
Beldon Roofing Company (TX)
Louis M. Bell (MA)

Mr. & Mrs. Ray Bellucci (CO)
Izzet Benaderet (NY)
Richard A. Bender (CA)
Christine E. Benero (CO)
Jack C. Benjamin (LA)
Mr. & Mrs. Neal M. Berg (CA)
Gail K. Bernstein (CA)
Bethesda Blues & Jazz Supper Club (MD)
Dr. & Mrs. James S. Birtwistle (TX)
Ann N. Black (CO)
Adam Blackman (NY)
Faith M. Blalock (AZ)
Janelle Blanco/Blanco + Hopkins &
Associates, LLC (CA)
Blue Planet International, Inc. (CA)
Bluegreen Vacations (FL)
Alan J. Blum (NY)
BMM Inc. (CA)
Boddewyn Gaynor Architects, d.p.c. (NY)
Benjamin C. Bohr (CA)
Mr. & Mrs. John A. Bolger (CO)
Sherry Bollenbacher (NV)
Carol & Pat Schuchard/Boo Cat Catering
LLC (MO)
Kevin Born/Born Electric, Inc. (MO)
Box Tops for Education (MI)
Mr. & Mrs. Richard Braddock (CO)
Edward Brand (CO)
Margaret M. Branson (OR)
Marc C. & Debbie Breslawsky (CT)



5,356
**PEOPLE WHO ATTENDED
FUNDRAISING EVENTS
ACROSS THE COUNTRY
IN FY 2015**

Broadmoor Development Company, Inc. (NE)
Michael Broida (CA)
Broken Sound (FL)
Freda Brooks (TN)
Dr. Albert R. Brown (FL)
Mr. & Mrs. MacKay S. Brown (NE)
Mark R. Brown (CO)
The Brownstein Corporation (PA)
Mr. & Mrs. Don Buchholz (CO)
Thomas Buck (NJ)
Dr. Edward & Mildred Cafritz Family
Foundation Inc. (MD)
Sandra Candotty (LA)
Martin Cane (PA)
Dr. & Mrs. Grant B. Cannon (UT)
Mark A. Caplow (CA)
Cara Martin, Inc. (NY)

Mr. & Mrs. Mark Carmany (CO)
Cars Helping Charities (CO)
Mimi Casement (CO)
Jessica Cavens (CO)
Cedar Croft Consulting Ltd. (NY)
Judge & Mrs. Herbert L. Chabot (MD)
Dr. & Mrs. Edward D. Chan (CO)
Dr. & Mrs. Harold L. Chapel (CO)
Combus J. Chapman (CO)
Mr. & Mrs. Charles E. Cheever Jr. (TX)
Mr. & Mrs. Reynolds S. Cheney (TN)
Cherry Creek Shopping Center (CO)
Susan Chong (CO)
James Christoffer (MN)
Nancy Cihlar (IL)
City of Hope (CA)
Dr. Henry N. Claman (CO)
Mr. & Mrs. Robert B. Clasen (CO)
Mr. & Mrs. Charles J. Clifford (MA)
CliftonLarsonAllen LLP (NM)
The Club at Pradera (CO)
Alan J. Cohen/Law Offices of Alan J.
Cohen (CA)
Brett Cohen (CA)
Geraldine R. Cohen (CO)
Mr. & Mrs. John M. Cohen (CA)
Leslie M. Cohen (CA)
Morris J. Cohen (FL)
Paul D. Cohn (WA)
CohnReznick (CA)
ColorWay Inc. (CA)
Comedy Works Inc. (CO)
Commercial Finance Conference of
California (CA)
Continental Development Corp. (CA)
Convergint Technologies LLC (CO)
Conway MacKenzie (NY)
Mr. & Mrs. Errol M. Cook (FL)
Bevan T. Cooney (CA)
Dr. B. H. Corum, PhD (TX)
Annette K. Cottingham (TX)
Mary E. Cox (CO)
Dr. Arthur R. Crampton (IL)
Mr. & Mrs. Paul Crawford (CA)
Creditors Adjustment Bureau (CA)
Margaret A. Crawl (CO)
Cuddy & Feder LLP (NY)
Mr. & Mrs. Jeffrey L. Cummings (CO)
Mr. & Mrs. C. Durbarow Curlee (MO)
Barbara Curry-James (ID)
Barbara & Haim Dabah Family Foundation,
Inc. (NY)
Mr. & Mrs. Ronald A. Dahl (CO)
Mr. & Mrs. Valdo Dal-Poggetto (CA)
Pauline Dana (NY)
Gregory Dangler (CO)
Scott Daniels (NY)
Mr. & Mrs. Jeffrey Davis (FL)
Lisa D. Dechiaro (NY)
Mr. & Mrs. Ray Deckert (TX)
Dekker/Perich/Sabatini (NM)
Michael C. Dermody (NV)
Mr. & Mrs. Craig Dethmers (CO)
Gloria Devoe (CO)

Delma Dible (KS)
Simon Dibos (CA)
Mr. & Mrs. Anthony J. Dina (IL)
Mr. & Mrs. Irwin J. Dinn (OH)
Mr. & Mrs. David N. Donar (CO)
Dr. Dorin L. Dougall (CO)
Douglass Foundation (TX)
Mr. & Mrs. Kenneth L. Dowd (SC)
Francis A. Doyle & Stacey A. Lauren (NY)
Driftwood Dairy Inc. (CA)
DS - Concept Factoring, Inc. (NY)
Richard Dukart (ND)
Mr. & Mrs. Daniel Dutton (NV)
Michael Earnhart (CA)
Mr. & Mrs. Edward W. Easton (CO)
Jack Edinger (CO)
Jane K. Eilertsen (VA)
Maureen Eisenberg (IL)
El Caballero Country Club (CA)
Barbara Ellin (MA)
Angela L. Ellis (CO)
Dr. James H. Ellis Jr. (CO)
Jean Ellis (TX)
Employees Community Fund of the Boeing Company (IL)
Engineered Mechanical Systems (CO)
Enstrom Candies (CO)
Karen J. Epps (IL)
Mr. & Mrs. Sidney Epstein (IL)
Mr. & Mrs. Glenn J. Eschrich (FL)
Gloria H. Esham (MD)
Mr. & Mrs. Charles T. Esmon (OK)
Fabric Avenue Inc. (CA)
Gregg Farber (NY)
Reza Farmehr (CA)
Ms. Michelle Fatibene (NY)
Betty J. Faulkner (WA)
Mr. & Mrs. Robert Feldman (NY)
Mr. & Mrs. Steven Fendrich (CO)
Fenwick-Keats Realty, LLC (NY)
Lois Ferguson (CO)
Lawrence N. Field (CA)
Mr. & Mrs. Kenneth J. Finger (NY)
Susan O. Fink (FL)
First Niagara (MA)
Anne & Stephen Fisher (CO)
Mr. & Mrs. Donne F. Fisher (CO)
Anne M. Fitzpatrick (NY)
Mr. & Mrs. William E. Fitzpatrick (KS)
Marilyn Fleischer (CO)
Neil Fleming (TX)
Flushing Savings Bank (NY)
Foley & Lardner (WI)
Mr. & Mrs. Kevin Fone (CO)
Mr. & Mrs. Donald W. Forster (FL)
Dr. & Mrs. Stephen L. Fox (CA)
Dr. Stephen K. Frankel (CO)
Robert & Barcie Freinberg (CA)
Frenkel Family Foundation (CT)
Mr. & Mrs. Stephen H. Friedlander (MD)
Esther Friedman (VA)
Mr. & Mrs. Harold Friedman (TX)
Richard Friedman (NY)
Mr. & Mrs. James Gaddis (UT)

Donald F. Lasher & Helen E. Gallant (AZ)
Alfred Gallicchio (NY)
Mr. & Mrs. William B. Galloway (CO)
Lois Gamble (TX)
Arthur I. Gardenswartz & Sonya Priestly (NM)
Alan & Marion Garfield (NY)
Ann Marie Garich (IL)
Mr. & Mrs. Chris Gdowski (CO)
Marian P. Gelfand (CO)
Glorianne D. Gendron (CO)
Getz Foundation (CO)
Gilbert Heritage Foundation (CA)
Ginsburg Inc. (CO)
Glaser Weil Fink Jacobs Howard Avchen & Shapiro LLP (CA)
Nora Gold (CA)
Joseph H. Goldberg Family Foundation (IL)
Mr. & Mrs. Richard E. Goldsmith (TX)
Mr. & Mrs. Barry H. Golsen (OK)
Google, Inc. (CA)
Mr. & Mrs. David Gottlieb (NY)
Granat Family Foundation (CO)
Constance M. Grassi (NY)
Eric Greager (CO)
Leonard & Jerry Greenbaum Family Foundation (GA)
Norman G. Greenberg (VA)
Paul Greenberg (FL)
Greenberg Glusker Fields Claman and Machtinger, LLP (CA)
Greinetz Family Trust (CA)
Dr. & Mrs. Leon S. Greos (CO)
Charles P. Gresham (CA)
Mr. & Mrs. Michael Groll (NY)
Robert Grossman (NY)
Herbert J. Grubb (MA)
Guaranty Bank & Trust Company (CO)
David A. Gurka (CO)
Andrew S. Gutstein (NY)
Eric D. Hadar (NY)
Harold A. Haddon (CO)
Hafner Vineyard (CA)
Steven P. Handler (IL)
Marguerite D. Hark (IL)
E. F. Harris Family Foundation (CA)
Mr. & Mrs. Gavin Hattersley (CO)

Francis Hawkins Jr. (CT)
Nancy Heggy (OH)
Joan P. Heller (AZ)
Lita Heller (CO)
Helpern Architects, P.C. (NY)
Karin D. Henszey (CO)
Dr. Ronny Herskovits & Dr. Beth Gross (NY)
Bernice Heslop (FL)
Andrew Thompson & Cynthia S. Hilb (CO)
Hilco Appraisal (CA)
Mr. & Mrs. Ronald G. Hill (VA)
Dr. & Mrs. Zachary I. Hodes (IN)
Mr. & Mrs. David C. Hoff (CO)
John Hoffman (CO)
Holliday Fenoglio Fowler, LP (NY)
Mr. & Mrs. Laurence Holzman (NY)
Hospira Employee Giving Campaign (NJ)
Hilbert R. Hubble (MD)
Carol P. Huller (CO)
Hunters Run Country Club (FL)
Rosalyn R. Hurley (NM)
Mr. & Mrs. Ron Hyland (CO)
Dr. Leon Hyman (HI)
IDT Canada Inc. (ON)
Connie & Gary Igo (WY)
Don R. Iley (CO)
Zeynep Inanli (NY)
Independent Bank (TN)
Interface Communications Co. (CO)
Billy Jacobs (NY)
John, Mary & Bernard Jacobs Foundation (NY)
Mr. & Mrs. Norman K. Jacobson (FL)
Anthony Jaffe (CA)
Diane S. Jameson (CO)
Twila Jenkins (CO)
Mr. & Mrs. Darrell Jennings (CO)
Jer Es Techcent LLC (CO)
Jessica's (CA)
J J's Mae Rainbeau (CA)
Mr. & Mrs. Robert L. Johns (TX)
Dolores C. Johnson (CA)
Mr. & Mrs. Jeffrey A. Johnson (AZ)
Mr. & Mrs. Larry Johnson (NM)
Patrick Johnson (CO)
Theodora Johnson (GA)
Johnson & Johnson Matching Gifts Program (NJ)
Joe R. Jones (OK)
Jones Hartz Building Supply (CO)
Mr. & Mrs. John Jumonville (CO)
JVA, Incorporated (CO)
Donald Kaplan (CA)
Michelle R. Kaplan (MD)
Elizabeth A. Karpowich (CO)
Mr. & Mrs. Harvey B. Karsh (CO)
Mr. & Mrs. Bruce D. Katchen (CO)
Tatyana Katsnelson (CO)
Lauren Katz (NY)
Ryan D. Katz (CA)
James D. Kaufman (CA)
Raymond Kaufman (VA)
Donald L. Keller (CO)
Brian D. Kelley & Anne R. Wolfe (IL)



Mr. & Mrs. William A. Kellnhofer, Sr. (CO)
 Lisa Kelly (CO)
 Mary K. & Daniel M. Kelly Family
 Foundation (IA)
 Laura M. Kemp (IN)
 Kenny Laguna Surf & Sport (CA)
 Edythe Kenton (CA)
 Mr. & Mrs. Joseph E. King Jr. (CO)
 The Charles & Lucille King Family
 Foundation (NY)
 Sandra W. Kirshner (CA)
 Kiva Foundation/Dr. & Mrs. Norman C.
 Payson (NH)
 Susan Klune-Goddard (CO)
 Mr. & Mrs. Peter Knight (DC)
 Michael Kolodny (IL)
 Mr. & Mrs. Charles E. Krueger (CA)
 Janice M. Kurth (IN)
 L.A. Realty Partners (CA)
 Lisa Laff (CO)
 Mr. & Mrs. Noah Lander (MO)
 Mr. & Mrs. Robert C. Lander (MO)
 Lawyers Title Company/Tony Behrstock (CA)
 Mr. & Mrs. Marvin Leichtung (NY)
 Mr. & Mrs. Michael J. Lerner (NJ)
 Christopher C. Leslie (OR)
 Dr. Stuart H. Lessans (MD)
 Dina L. Levin (CA)
 Ms. Mila Levine (NY)
 Mr. & Mrs. Norman Lichtman (FL)
 John N. Lieber (NY)
 Kate G. Lieber (VT)
 Dr. Robert S. Liebeskind (CA)
 Lorraine Lin (CA)
 Minnie B. Lindsey (CO)
 Richard & Carol Lipscomb (TX)
 Peter A. Loram (CA)
 Fidel & Magdalena Lopez (NM)
 Mr. & Mrs. Jonathan A. Lucas (NY)
 Deborah Luginbuhl (CO)
 Marc Lumpkin (CO)
 Donna Lundgren-Wiedinmyer (CO)
 Mr. & Mrs. Howard W. Lutnick (NY)
 Ted Lux/Preferred Ventures Corp. (CA)
 LVH Consulting (VA)
 David & Terry Mabo (OH)
 Macias Gini & O'Connell LLP (CA)
 Mr. & Mrs. Justin E. Magazine (MD)
 Maidman Realty Group LLC (NY)
 Rochelle & Richard Maize Foundation (CA)
 Dr. & Mrs. Mickey J. Mandel (CO)
 Dr. Henry J. Mankin (MA)
 Mr. & Mrs. John G. Markley (CA)
 David Marks (CO)
 Mr. & Mrs. Michael Marrassino (CO)
 Paula D. Masciulli (NJ)
 Marjorie Masel (WA)
 Dr. & Mrs. Robert J. Mason (CO)
 Mr. & Mrs. James I. Massaro (CO)
 Carol L. Maxon (IL)
 Mr. & Mrs. Clifford J. Mayoh (IL)
 Hugh McCabe Jr. (IL)
 McCarthy, Cook & Company (CA)
 Margaret M. McDonald (CO)

Dean I. McMurry (CO)
 The Meltzer Group (MD)
 Michael D. Mendenhall (VA)
 Mercedes-Benz of Arlington (VA)
 Merchant Factors (CA)
 Timothy Messner (CO)
 Mesta Construction, Inc. (NY)
 Cheryl Metrick (NY)
 Dr. E. Gerald Meyer (WY)
 Karen L. Meyer (CO)
 Mr. & Mrs. Earl Meyerson (MD)
 MidCap Financial, LLC (NY)
 Milberg Factors Inc. (CA)
 Rob Misener (PA)
 Jamie Mitchell (NY)
 Craig E. Moffett (NY)
 Monroe Capital Management Advisors,
 LLC (IL)
 Ruthann C. Moomy (CA)
 Curt Moore (CO)
 Mr. & Mrs. Jerome Morgan (CA)
 Harold M. Morganstern (MD)
 Mark M. Morkos (CA)
 Matthew Most (CO)
 Mr. & Mrs. Albert Murad (FL)
 Mr. & Mrs. William Myers (CO)
 Eric K. Neste (CO)
 New Roc Fec LLC (NY)
 Mr. & Mrs. Arthur Nichols (CA)
 Nancy Nightingale (NY)
 Nick Nunnari (CA)
 NYCB Specialty Finance Company LLC (MA)
 Johnny W. O'Neal (CA)
 Mr. & Mrs. David O'Neill (NY)
 O'Shea Brothers Construction Co. (MO)
 Law Offices of Jack C. Ogg (TX)
 Dr. George I. Ogura (CO)
 Omni Los Angeles Hotel at California
 Plaza (CA)
 Mr. & Mrs. Charles Omundson (TX)
 Mr. & Mrs. Peter S. Ordway (WY)
 Gregory Osborn (CO)
 M & M Osterman Foundation (CO)
 Blake Otte (NY)
 Mr. & Mrs. William A. Outten (MD)
 Eric Pagels & Mary Katherine Zevalkink (CO)
 Mr. & Mrs. Dean E. Palin (NY)
 Lynn D. Parrish (CO)
 Mr. & Mrs. Mark S. Pash (CA)
 Steven Passerman (ME)
 PayPal Charitable Giving Fund/MissionFish
 Mr. & Mrs. Perry C. Peine (CO)
 Ernest M. Pelli (NY)
 Mr. & Mrs. Sam Pemberton (MO)
 People's United Business Capital (NJ)
 Pest Elimination Systems Technology Inc. (NY)
 Brian Peters (CO)
 Pfizer Foundation Matching Gifts
 Program (NJ)
 Elizabeth Phelps (CA)
 Mr. & Mrs. Jeffrey K. Pierce (MO)
 Mr. & Mrs. Ken Pilot (NY)
 Mr. & Mrs. Fred J. Pisciotta (CO)
 Mr. & Mrs. James B. Pittleman (VA)

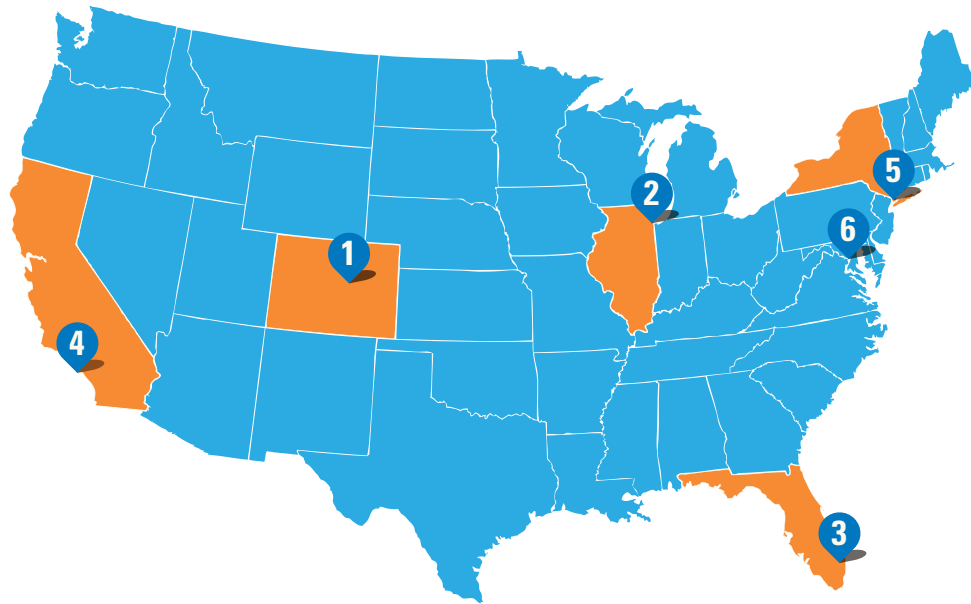
Mr. & Mrs. Eli Plaxe (CA)
 Vera Pless (IL)
 Mr. & Mrs. William H. Plummer (CO)
 PNMR Services Company (NM)
 Marvin F. Poer and Company (TX)
 Rebecca A. Pott (CO)
 Premier Bone & Joint Centers (WY)
 Shelly Preziosi (FL)
 Proskauer Rose LLP (FL)
 Prosser Stevens Real Estate Investments (CA)
 Provenance Hotels (OR)
 Lisa M. Putnam (TX)
 Frank R. Randall (CA)
 Mr. & Mrs. Lloyd R. Rauch (FL)
 RE/MAX Commercial & Investment Realty (CA)
 Recycle America Alliance, LLC (TX)
 Sydney B. Reding (OK)
 Redwood Management Group LLC (NY)
 Reed Smith (NY)
 Howard A. Rein (NY)
 Mr. & Mrs. Bill Reisler (KS)
 The Related Companies, LP (NY)
 Rabbi & Mrs. Joel Rembaum (CA)
 The Rendon Center for Dermatology &
 Aesthetic Medicine (FL)
 Linda Rice (CO)
 Mr. & Mrs. Greg L. Rimling (TX)
 Dr. & Mrs. John E. Rittmann (SD)
 RM Hospitality Group Inc./Rosa Mexicano
 Restaurants/Mr. & Mrs. Dan Hickey (NY)
 Glenna M. Robbins (CA)
 Betty D. Roberts (CA)
 Mr. & Mrs. Richard L. Robinson (CA)
 Margaret Roll (CO)
 Rolling Plains Construction Inc. (CO)
 Sally Romotsky, PhD (CA)
 Mr. & Mrs. Steve Rosen (CO)
 Sollie Rosen Memorial Foundation (OH)
 Maier Rosenberg (CA)
 Anne K. Rosenblum (VA)
 David Rosengarten (NY)
 Mr. & Mrs. Jason Rosenthal (NY)
 Melanie Roth (CO)
 Mr. & Mrs. David Rottenberg (CA)
 Mr. & Mrs. Louis Rubin (MD)
 Mr. & Mrs. Melvin L. Rukin (IL)
 Mr. & Mrs. Phillip J. Ruschmeyer Jr. (CO)
 Mr. & Mrs. Harry A. Russell (NY)
 Mr. & Mrs. Michael J. Russell (CO)
 Yvonne Salfinger (CO)
 Saul M. Salka (CA)
 Salus Capital Partners, LLC (MA)
 Nita-Joan Sams (LA)
 Gary & Laurie Samson (CA)
 San Antonio Spurs (TX)
 Sanitas Skin Care Clinic (CO)
 Randy Savona (CO)
 Michael B. Scheffres (MD)
 Scherzer International (CA)
 Mr. & Mrs. Sheldon F. Schiff (NY)
 Judith B. Schneider (OH)
 Marilyn Schneider (CA)
 Mr. & Mrs. Richard P. Schottenfeld (NY)
 Erica Schwartz (NY)

Patricia Schwartz (CA)
Suzanne P. Schwartz (NY)
Sherman McCorkle/Science & Technology
Park Development Corporation (NM)
Sector3 Appraisals, Inc. (NY)
Dr. & Mrs. Charles E. Seibert (CO)
Mr. & Mrs. Mark E. Seitelman (NY)
Luky Seymour (CO)
SG Equities (NY)
Trevor Shaffer (CA)
Shalom B. LLC (CA)
Mr. & Mrs. Andrew L. Shapiro (NY)
Mr. & Mrs. Bradley Shaps (IL)
Sharney Foundation (TX)
Mr. & Mrs. Robert G. Sharp (NY)
Shenson Law Group PC (CA)
Mr. & Mrs. David S. Sher (CO)
Sherwood Partners, LLC (CA)
Mr. & Mrs. Martin Shore (NM)
Bernard Sichel (CA)
Cassandra Siegel (CT)
Lois Siegel (CO)
Mr. & Mrs. Howard B. Silberberg (VA)
R. Gabriele Silten (CA)
Leslie Simmons (CA)
Randy Simon (NY)
Robert L. Simon (CT)
Viola A. Singletary (NM)
Mr. & Mrs. Gregory Sissel (CO)
Mr. & Mrs. Joseph M. Sitrick (FL)
Beatrice Sklarewitz (CA)
Harold Skolnick (NC)
Clara M. Smith (CO)
Mr. & Mrs. R. Douglas Smith (CA)
Warren D. Snaider (DC)
Mr. & Mrs. Jerome G. Snider (NY)
Lou Sokolovskiy (CA)
Dr. Jonathan Solomon (DE)
South Valley Drywall (CO)
Hal E. Sperber (UT)
Thomas Spinogatti (CA)
Dr. Alana R. Spiwak (TX)
SSG Capital Advisors LLC (PA)

Robert M. St. John (NM)
Rabbi & Mrs. Samuel M. Stahl (TX)
John W. Stamison (CO)
Standard Management Co (CA)
Stanley Martin Companies LLC (VA)
Barbara Steen (WY)
Susan Steinberg (PA)
The Steinfeld Foundation (IL)
James Steverson (CO)
Mr. & Mrs. David K. Strate (CO)
Jennifer Stricker (CO)
Wallace Struble (CO)
Mr. & Mrs. John Struthers Jr. (CO)
Jay and Kelly Sugarman Foundation (NY)
Mr. & Mrs. Peter M. Sullivan (DC)
Sunstate Equipment Co., LLC (CO)
SunTrust Robinson Humphrey (NY)
Mr. & Mrs. Bruce E. Surry (NY)
Ida Sybrandy (CO)
Symphony Development (CA)
Mr. & Mrs. Michael G. Tannenbaum (NY)
Bernard Tecotzky (CA)
Teeze Me (NY)
Anna L. Tessier (FL)
Mr. & Mrs. Curt R. Thompson (AZ)
Mark Thompson (CO)
Tidewater Children's Foundation (VA)
The Tiger Group (CA)
The Title Family Foundation (MD)
Total Wine & More (MD)
Mr. & Mrs. Leon Toubin (TX)
Towne Place Suites Southeast (CO)
Tri-Cities Jewish Federated Charities (AL)
Derek Trulson & Jennifer Gardner (NY)
Turnberry Isle Miami Hotel (FL)
Mr. & Mrs. Garrett M. Tuttle (CO)
Ben Tyber (GA)
UFC (NV)
Susan & Jim Ulmer (CA)
Umberto (CA)
United Way of San Antonio &
Bexar County (TX)
Mr. & Mrs. Al Unser, Sr. (NM)

Mr. & Mrs. Kenneth Urman (WA)
US Bank Asset Based Finance (MA)
Mr. & Mrs. Jason H. Uyeda (CO)
Elizabeth N. Van Leeuwen (MI)
Vans Warped Tour (CA)
Gaston Veliz (Chile)
Betty Vendig (CA)
Ranganathan Venkatesan (VA)
Gwynne L. Vincent (ME)
Christopher Vitry (CO)
Mr. & Mrs. Charles Wagner (DC)
Mr. & Mrs. Philip Waldbaum (CO)
Walt Disney World Resort (FL)
Nancy Walters (CO)
Phyllis R. Ward (CO)
Brian Waterman & Lauren Lesser (NY)
Waterwalk Production Company (NY)
The Watson Family Fund (CO)
Mitra Watts (CO)
Paula M. Weatherford (AL)
Richard Weill (AZ)
Mr. & Mrs. Matthew A. Weinberg (NY)
Miriam Weinberger (CO)
Joel Weinstein (CA)
Marc A. Weisman (NY)
Wells Fargo Trade Capital Services (CA)
Dr. & Mrs. Stanley G. Werner (FL)
Robert H. Wertheim (CA)
Albert E. Whitehead (OK)
Forest M.* & Dorothy H. Wilhite (CO)
Arthur O. Wilkonson (CO)
Carol C. Williams (CO)
Mr. & Mrs. William T. Williams (VA)
Willis Insurance (CA)
Ivan L. Wilzig (NJ)
Sandra Winchester (TX)
Mr. & Mrs. Lawrence J. Winnerman (CO)
Karen A. Wirthlin (CO)
Dr. & Mrs. Dale A. Wood (TX)
Gary Woodworth (CO)
Mr. & Mrs. Allen R. Yanta (TX)
Nola J. Yates (GA)
Mr. & Mrs. Robert A. Zorn (NY)

43,299
GIFTS OF \$1 OR MORE



DEVELOPMENT OFFICE

1 Denver

1400 Jackson Street
Denver, CO 80206

303.728.6591 | 303.728.6663
800.423.8891, ext. 6591

Lisa Tadiri, Vice President,
Development

Susan Latimer, Associate Vice
President for Development,
Campaign

Gordon P. Smith, Associate Vice
President, Planned Giving

Candace Wilson, National Director,
Special Events

Rebecca Cover, Associate Director,
National Corporate and
Foundation Support

Mindy Gumb, National Director,
Annual Fund

Jennifer Beck, Senior Director,
Development Communications

Meg Hilletework-Tesfaye, Senior
Director, Research and Records

REGIONAL OFFICES

2 Chicago

100 North LaSalle Street, Suite 1612
Chicago, IL 60602

800.268.0252 | 312.920.1798

Sherry Wolf, Director,
Regional Development

Sylvia Berman-Peck, Senior
Associate Director, Major and
Planned Giving

3 Florida

7900 Glades Road, Suite 410
Boca Raton, FL 33434

800.286.6886 | 561.477.5400

Victor Levitt, Director, Regional
Development

Stephanie Ballman, Senior
Associate Director, Special Events

4 Los Angeles

14724 Ventura Blvd., Suite 1004
Sherman Oaks, CA 91403

800.821.3670 | 818.905.1300

Beth Kaplan, Director,
Regional Development

Catina Lesavoy, Senior Associate
Director, Special Events

5 New York

271 Madison Ave., 19th Floor
New York, NY 10016

212.868.3062

Marc Krause, CAP, Associate
Vice President for Development,
Eastern Region

Dru Finkelstein, Regional Director
of Development/Special Events

Mattie Shephard, Senior Associate
Director, Special Events

Michele Mosko, Senior Associate
Director, Major and Planned Giving

6 Washington, DC

901 North Washington Street,
Suite 510

Alexandria, VA 22314

703.519.5760



National Jewish Health is the leading respiratory hospital in the nation. Founded 116 years ago as a nonprofit hospital, National Jewish Health today is the only facility in the world dedicated exclusively to groundbreaking medical research and treatment of patients with respiratory, cardiac, immune and related disorders. Patients and families come to National Jewish Health from around the world to receive cutting-edge, comprehensive, coordinated care.

Thanks to the following people for their contributions to the writing, photography, design and production of this annual report.

Writing and Editing: William Allstetter, Jennifer Beck, Cyndy Mitchell

Graphic Design: Debra Beaudette, Adam Raiola

Design Studio Manager: Alan Barry Hesker

Vice President, Communications: Lauren Green-Caldwell

Vice President, Development: Lisa Tadiri

Photography:

Steve Friedman, page 47, A Winter's Evening Dinner

Skip Hopkins, page 45, Los Angeles Professional Services Black and White Ball

Steve Peterson, page 46, Beaux Arts Ball

Dan Sidor, pages 2, 4, 7, 8, 15, 17, 21, 22, 68, and back cover

James Sheng, page 45, Spirit Achievement Award Dinner

Beth Woods, pages 24, 33, 45 (National Jewish Health Golf Classic)

Thank you to the Rush Truck Center in Denver for its assistance with the photo shoot on pages 14–15.

© 2015 National Jewish Health | njhealth.org



facebook.com/njhealth



[@njhealth](https://twitter.com/njhealth)



linkedin.com/company/national-jewish-health



youtube.com/nationaljewish