

Who can benefit from
Lung Cancer Screening CT?
People ages 50 to 75 with a significant
smoking history (30 pack years).



David Lynch, MD, thoracic radiologist and James Jett, MD, pulmonary oncologist review a lung cancer screening CT scan.

About Us

For 15 consecutive years, National Jewish Health has been ranked by *U.S. News & World Report* as the number one respiratory hospital in the nation. We combine compassionate patient care, collaborative research, education and outreach services. National Jewish Health has experts in respiratory, cardiac, immune and related diseases. Every day we break new ground searching for improved prevention, diagnosis and treatment of diseases.

Questions?

Talk with a Lung Line® representative about lung cancer, request educational information or schedule an appointment. Call 800.222.LUNG.

njhealth.org

Lung Line® 800.222.LUNG

 **National Jewish Health®**
Science Transforming Life®

 **National Jewish Health®**

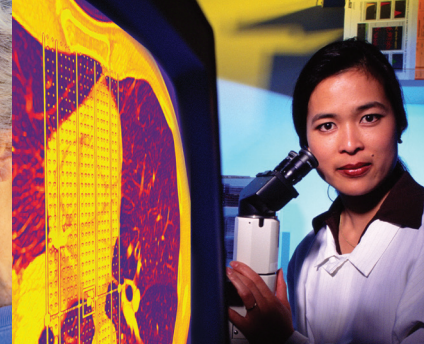
Science Transforming Life®

**Early Detection
Can Save Your Life**
Lung Cancer Screening CT Program



Lung Cancer Screening

Early Diagnosis Can Save Your Life



What is lung cancer?

Lung cancer is the most common type of cancer in American men and women. **It is also the leading cause of cancer deaths in the U.S. and the world.** More patients in America die from lung cancer alone than prostate, breast and colon cancers combined (American Cancer Society). Most cases are linked to tobacco smoking.

Why is it important to screen for lung cancer?

Early detection of lung cancer through CT screening has been proven to significantly decrease lung cancer deaths. You are at increased risk for developing lung cancer if you smoked, for example, two packs a day for 15 years (30 pack years).

How is this screening done?

You lie flat on the CT table and the machine scans over your chest during one breath hold. **It is simple, easy and does not hurt.**

How safe is this test?

This exam is done at a reduced radiation dose and is **considered to be very safe.**

When will I get the results?

Your CT will be interpreted by our team of experienced chest radiologists. It will also be evaluated by a special computer program designed to detect lung nodules. You will receive your results within a few days.

How much does this CT scan cost?

Currently the exam is covered by some private insurance companies, but not by Medicare. **We offer this life saving exam for just \$250.**

About our program

Our Lung Cancer Screening CT Program is based on the results of the National Lung Screening Trial (NLST). The NLST results showed a 20 percent reduction in lung cancer deaths in high risk individuals screened with CT.

Our radiologists are subspecialty trained in thoracic (chest) radiology. Many are national experts on lung cancer screening. You will not find equal expertise anywhere else. **Our Lung Cancer Screening CT Program includes:**

- Reduced-dose chest CT
- Lung nodule detection
- Lung nodule registry
- Lung cancer diagnosis

What are we looking for?

The CT scan provides the clearest image of the lung tissue. This screening is looking for lung nodules.

- A nodule is a small rounded spot that looks like a white shadow on the CT scan
- Nodules are common, and about 97 percent are noncancerous
- A nodule can, however, represent early lung cancer

Lung Nodule Registry

Our lung nodule registry is the first in the U.S. The registry helps us watch nodules. It tracks any changes to the nodules' features. We also use the registry to tell patients and their doctors when a follow-up CT scan is needed. The follow-up CT scans are performed according to national guidelines.

How the radiologist helps

Our radiologists determine if the nodule has any worrisome features. Based on how the nodule looks, they decide when follow-up imaging or other tests are necessary. If the CT scan shows high concern for lung cancer, additional tests will be performed. Every case is different and is given personalized attention by our radiologists.

What if it's lung cancer?

If further tests confirm lung cancer, we have a special Lung Cancer Treatment Program at National Jewish Health®. Our lung cancer team are well-known experts. They will create a treatment plan that is just for you, your cancer and your health care needs.

njhealth.org

Lung Line® 800.222.LUNG

