

TOP 10 INHALER MISTAKES

Inhaled asthma medicine needs to reach the airways to work. Here are 10 common mistakes made when using a metered-dose inhaler (MDI) and how to correct them.

1 Slouching

FIX IT: Sitting up straight or standing allows the lungs to fully inhale and provides more power to exhale.



2 Using an empty inhaler

FIX IT: Request a refill when there is 1-2 weeks of medication left.



3 Not shaking or priming the inhaler *

FIX IT: Shake the inhaler canister vigorously (about 10 to 15 times) for the medication to be ready to work. When using a new inhaler, prime it by releasing three to four test sprays. Prime again if not used for several weeks. *This tip applies to MDI inhalers. Diskus or dry powder inhalers do not require shaking.



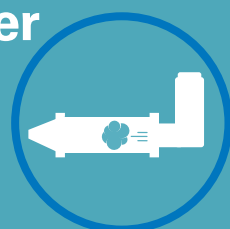
4 Using an MDI inhaler without a spacer

FIX IT: A spacer helps more of the medicine get to the airways. Insert the inhaler into the spacer. Spray one puff of medicine and inhale slowly. Hold your breath for a count of 10 and exhale slowly.



5 Spraying several puffs of inhaler into spacer

FIX IT: Spray only one puff at a time of the inhaler into the spacer for each breath. Breathe out before inhaling. Inhale and hold your breath for a count of 10, then exhale. Repeat for the number of puffs the doctor prescribed.



6 Holding the head too far forward or backward

FIX IT: The head needs to be in a normal position, not too far back or too far forward, to help make a direct path for the medicine to reach the airways.



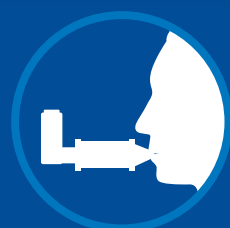
7 Tongue or teeth in the way of spacer/inhaler opening

FIX IT: Put the mouthpiece of the spacer/inhaler in the mouth above the tongue, under the top teeth.



8 Mouth not tight enough around spacer/inhaler

FIX IT: Close the lips around the mouthpiece of the spacer or inhaler so air does not escape.



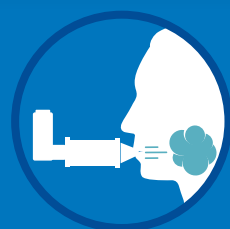
9 Directing spacer/inhaler at tongue or roof of mouth

FIX IT: Aim the spacer/inhaler at the back of the throat, so the medicine reaches the lungs.



10 Inhaling medicine too fast

FIX IT: Inhale slowly. A whistle sound made when using a spacer means the inhalation is too fast.



These tips are not applicable to breath-activated and powder inhalers.



Reminders

- Follow instructions for using your inhaler.
- Gargle and spit after inhaling a steroid.
- Show your inhaler technique to your provider.
- Clean the inhaler and spacer according to instructions.

Asthma Facts

- 1 in 11 adults has asthma
- One-third of adults with asthma miss work
- 10 asthma deaths occur each day

njhealth.org

1.877.CALL NJH (1.877.225.5654)

© 2024 National Jewish Health

 **National Jewish Health**
Breathing Science is Life.®

5716516MKT11/24